

Programmer's guide
last change on: 04.03.2020

CAN - EDCP Programmers guide

Description of iseg Enhanced Device Control Protocol to access iseg hardware by CAN bus connection

Document history

Version	Date	Major changes
2.4	04.03.2020	Improve documentation
2.3	06.02.2020	Improve documentation, fixed, Safety Information
2.2	08.11.2019	Improve documentation, fixed
2.1	30.08.2017	Revised
2.0	28.1.2016	Relayouted documentation

Disclaimer / Copyright

Copyright © 2020 by iseg Spezialelektronik GmbH / Germany. All Rights Reserved.

This document is under copyright of iseg Spezialelektronik GmbH, Germany. It is forbidden to copy, extract parts, duplicate for any kind of publication without a written permission of iseg Spezialelektronik GmbH. This information has been prepared for assisting operation and maintenance personnel to enable efficient use.

The information in this manual is subject to change without notice. We take no responsibility for any mistake in the document. We reserve the right to make changes in the product design without reservation and without notification to the users. We decline all responsibility for damages and injuries caused by an improper use of the device.

Safety

This section contains important security information for the installation and operation of the device. Failure to follow safety instructions and warnings can result in serious injury or death and property damage.

Safety and operating instructions must be read carefully before starting any operation.

We decline all responsibility for damages and injuries caused which may arise from improper use of our equipment.

Depiction of the safety instructions

DANGER!



"Danger!" indicates a severe injury hazard. The non-observance of safety instructions marked as "Danger!" will lead to possible injury or death.

WARNING!



"Warning!" indicates an injury hazard. The non-observance of safety instructions marked as "Warning!" could lead to possible injury or death.

CAUTION!



Advices marked as "Caution!" describe actions to avoid possible damages to property.

INFORMATION



Advices marked as "Information" give important information.



Read the manual.



Attention high voltage!



Important information.

Intended Use

The device may only be operated within the limits specified in the data sheet. The permissible ambient conditions (temperature, humidity) must be observed. The device is designed exclusively to control high voltage systems as specified in the data sheet. It must only be used specified in Technical data. Any other use not specified by the manufacturer is not intended. The manufacturer is not liable for any damage resulting from improper use.

Qualification of personnel

A qualified person is someone who is able to assess the work assigned to him, recognize possible dangers and take suitable safety measures on the basis of his technical training, his knowledge and experience as well as his knowledge of the relevant regulations.

General safety instructions

- Observe the valid regulations for accident prevention and environmental protection.
- Observe the safety regulations of the country in which the product is used.
- Observe the technical data and environmental conditions specified in the product documentation.
- You may only put the product into operation after it has been established that the high-voltage device complies with the country-specific regulations, safety regulations and standards of the application.
- The high-voltage power supply unit may only be installed by qualified personnel.

Important safety instructions

DANGER!



DANGER!

This device is part of a high voltage supplying systems.
High voltages are dangerous and may be fatal.

USE CAUTION WHILE WORKING WITH THIS EQUIPMENT.
BE AWARE OF ELECTRICAL HAZARDS.

Always follow at the minimum these provisions:

- High voltages must always be grounded
- Do not touch wiring or connectors without securing
- Never remove covers or equipment
- Always observe humidity conditions
- Service must be done by qualified personnel only

WARNING!



WARNING!

RAMP DOWN VOLTAGES!

Before insertion or removal of crate controller, please make sure, that all voltages are ramped down, modules are switched off and power cord is disconnected.

CAUTION!



CAUTION!

When controlling, with software, the high voltage systems, make sure that nobody is near the high voltage or can be injured.

INFORMATION



INFORMATION

Please check the compatibility with the devices used.

Table of Contents

Document history	2
Disclaimer / Copyright	2
Safety	3
Depiction of the safety instructions	3
Intended Use	4
Qualification of personnel	4
General safety instructions	4
Important safety instructions	5
1 General information	10
1.1 Devices covered by this manual	10
1.2 CAN-Bus Implementation	11
2 Crate Controller CC24/23	11
2.1 Data types	11
2.2 Access rights	11
2.3 NMT CAN commands (broadcast messages)	12
2.4 Crate Controller commands	13
2.4.1 Crate Controller Uptime	13
2.4.2 Crate Controller Serial Number	13
2.4.3 Crate Controller Firmware Release	13
2.4.4 Crate Controller Firmware Name	13
2.4.5 Crate Controller Article Description	13
2.4.6 Crate Controller Control	14
2.4.7 Crate Controller Status	15
2.4.8 Crate Controller Event Status	16
2.4.9 Crate Controller Event Mask	16
2.4.10 Crate Controller Fan Speed Percent	17
2.4.11 Crate Power On/Off	17
2.4.12 Crate Chassis Identification	17
2.4.13 Crate Backplane Type	18
2.4.14 Crate Temperature Sensor	19
2.4.15 Crate Supply Measurement	19
2.4.16 Crate Supply Nominal	19
2.5 Statistic registers	20
2.5.1 CAN Bus Received	20
2.5.2 CAN Bus Receiver Overrun	20
2.5.3 CAN Bus Transmitted	20
2.5.4 CAN Bus Transmit Buffer Full	21
2.5.5 CAN Bus Dropped	21
2.5.6 CAN Bus Error	21
2.5.7 CAN Bus Throttle	21
2.5.8 CAN Bus Status	22
2.5.9 CAN Bus Disabled	22
2.5.10 CAN Bus Bitrate	22
2.6 Examples	23
3 Commands for High Voltage Devices	24
3.1 General information	24
3.2 General settings and options	24
3.3 Operation principle	25
3.3.1 Remote interface control	25
3.3.2 Channel and Module	26
3.3.3 Terminology	26
3.3.4 Channel operation modes	27
3.3.5 Status and Event generation	28

3.3.6 Additional current measuring range (Option)	28
3.3.7 Control and Status items	29
3.3.7.1 Controls	29
3.3.7.2 Status and events	29
3.3.7.3 Event status and event mask	29
3.3.8 Summarizing channel characteristics into groups	31
3.3.8.1 Set Group	31
3.3.8.2 Status Group	31
3.3.8.3 Monitor Group	31
3.3.8.4 Timeout Group	31
3.3.8.5 Responses on events (Soft-Kill features)	31
3.4 Communication via Interface	32
3.4.1 Enhanced Device Control Protocol EDCP	32
3.4.1.1 Data formats	34
3.4.2 CAN Data Frame	35
3.4.3 Summary of CAN data frame accesses via the NMT service identifier	37
3.4.4 Summary of CAN data frame accesses via the Front-end-address identifier	39
3.4.4.1 List to access of the EDCP made for HV boards up to 255 channels EDCP Single Channel Accesses	39
3.4.4.2 EDCP Multiple Single Channels Access	41
3.4.4.3 Module Access	43
3.4.4.4 EDCP Group Accesses	45
3.4.4.5 Important DCP Module Access	46
3.5 Description of data information per DATA_ID in EDCP	47
3.5.1 EDCP Single Access	47
3.5.1.1 Channel status (single/multiple single read-write access)	47
3.5.1.2 Channel status32 (single/multiple single read-write access)	47
3.5.1.3 Channel control: (single write- and single/ multiple single read-write access)	50
3.5.1.4 Channel control32: (single write- and single/ multiple single read-write access)	50
3.5.1.5 Channel event status (single write- and single/ multiple single read-write access)	51
3.5.1.6 Channel event status32 (single write- and single/ multiple single read-write access)	52
3.5.1.7 Channel event mask (single write- and single/ multiple single read-write access)	54
3.5.1.8 Channel event mask32 (single write- and single/ multiple single read-write access)	54
3.5.1.9 Delayed trip time	56
3.5.1.10 Delayed trip action (single/ multiple single read-write access)	56
3.5.1.11 External channel inhibit	57
3.5.1.12 VoltageRampPriority (single write- and single/ multiple single read-write access)	57
3.5.1.13 Set voltage (single write- and single/ multiple single read-write access)	58
3.5.1.14 Set current / trip (single write- and single/ multiple single read-write access)	58
3.5.1.15 Voltage measurement (single/ multiple single read-write access)	59
3.5.1.16 Current measurement (single/ multiple single read-write access)	59
3.5.1.17 Voltage bounds (single write- / single/ multiple single read-write access)	60
3.5.1.18 Current bounds (single write- / single/ multiple single read-write access)	60
3.5.1.19 Nominal voltage (single/ multiple single read-write access)	61
3.5.1.20 Nominal current (single/ multiple single read-write access)	61
3.5.1.21 Current measurement range (single/ multiple single read-write access)	61
3.5.1.22 VoltageBottom (single/ multiple single read-write access)	62
3.5.1.23 VCT Coefficient (single/ multiple single read-write access)	62
3.5.1.24 Temperature external (single/ multiple single read-write access)	62
3.5.1.25 Resistor external (single/ multiple single read-write access)	63
3.5.1.26 VoltageRampSpeedUp (single write- / single/ multiple single read-write access)	63
3.5.1.27 VoltageRampSpeedDown (single write- / single/ multiple single read-write access)	63
3.5.1.28 CurrentRampSpeedUp (single write- / single/ multiple single read-write access)	64
3.5.1.29 CurrentRampSpeedDown (single write- / single/ multiple single read-write access)	64
3.5.1.30 VoltageRampSpeedMin (single write- / single/ multiple single read-write access)	64
3.5.1.31 VoltageRampSpeedMax (single write- / single/ multiple single read-write access)	65
3.5.1.32 CurrentRampSpeedMin (single write- / single/ multiple single read-write access)	65
3.5.1.33 CurrentRampSpeedMax (single write- / single/ multiple single read-write access)	65
3.5.1.34 Output mode (single/ multiple single read-write access)	66
3.5.1.35 Output polarity (single/ multiple single read-write access)	66
3.5.1.36 Output voltage mode (single/ multiple single read-write access)	66
3.5.1.37 Output current mode (single/ multiple single read-write access)	67
3.5.1.38 Output voltage mode list (single/ multiple single read-write access)	67
3.5.1.39 Output current mode list (single/ multiple single read-write access)	67

3.5.1.40 Group number (single/ multiple single read-write access)	68
3.5.2 EDCP Module Accesses	69
3.5.2.1 ModuleStatus (module read-write access)	69
3.5.2.2 ModuleStatus32 (module read-write access)	69
3.5.2.3 ModuleControl (module write- / read-write access)	72
3.5.2.4 ModuleControl32 (module write- / read-write access)	72
3.5.2.5 ModuleEventStatus (module write- / read-write access)	74
3.5.2.6 ModuleEventStatus32 (single/ multiple single read-write access)	74
3.5.2.7 ModuleEventMask (module write- / read-write access)	75
3.5.2.8 ModuleEventMask32 (module write- / read-write access)	75
3.5.2.9 ModuleEventChannelStatus (module write- / read-write access)	77
3.5.2.10 ModuleEventChannelStatus32 (module write- / read-write access)	77
3.5.2.11 ModuleEventChannelMask (module write- / read-write access)	78
3.5.2.12 ModuleEventChannelMask32 (module write- / read-write access)	78
3.5.2.13 ModuleEventGroupStatus (module write- / read-write access)	79
3.5.2.14 ModuleEventGroupMask (module write- / read-write access)	80
3.5.2.15 VoltageRampSpeed (module write- / read-write access)	81
3.5.2.16 CurrentRampSpeed – current controlled modules only (module write- / read-write access)	81
3.5.2.17 VoltageMax – OPTION (module read-write access)	82
3.5.2.18 CurrentMax – OPTION (module read-write access)	83
3.5.2.19 Supply24 (module read-write access)	83
3.5.2.20 Supply5 (module read-write access)	84
3.5.2.21 BoardTemperature (module read-write access)	84
3.5.2.22 Threshold to arm the errors detection (module write / read- write access)	84
3.5.2.23 Serial number (module read-write access)	85
3.5.2.24 Firmware release (module read-write access)	85
3.5.2.25 Bit rate (module write- / read-write access)	85
3.5.2.26 Firmware Name (module read-write access)	86
3.5.2.27 ADC SamplesPerSecond SPS (module write- / read-write access)	87
3.5.2.28 DigitalFilter (module write- / read-write access)	87
3.5.2.29 ChannelNumber (module read access)	87
3.5.2.30 ArticleDescription (module read access)	88
3.5.2.31 ModuleOption (module read access)	88
3.5.2.32 ModuleOptionSpec (module read access)	89
3.5.2.33 ModuleCommMode (module write access)	90
3.5.3 EDCP Group Accesses	90
3.5.3.1 SetGroup	91
3.5.3.2 StatusGroup	93
3.5.3.3 MonitoringGroup	95
3.5.3.4 DelayedTripGroup	97
3.5.3.5 Request Temperatures and Supplies (group write access)	99
3.5.3.6 GroupVoltageLimit – OPTION (module read-write access)	99
3.5.3.7 GroupCurrentLimit – OPTION (module read-write access)	99
3.5.3.8 VoltageSetAllChannels (group write access)	100
3.5.3.9 Current-Trip/Set-AllChannels (group write access)	100
3.5.3.10 SetOnOffAllChannels (group write- / read-write access)	100
3.5.3.11 SetEmergencyAllChannels (group write- / read-write access)	102
3.5.3.12 EventStatusVoltageLimitAllChannels (group write- / read-write access)	103
3.5.3.13 EventStatusCurrentLimitAllChannels (group write- / read-write access)	104
3.5.3.14 EventStatusCurrentTripAllChannels (group write- / read-write access)	105
3.5.3.15 EventStatusExternalInhibitAllChannels (group write- / read-write access)	106
3.5.3.16 Set ON / OFF channels extender (group write- / read-write access)	107
3.5.3.17 Set EMERGENCY channels extender (group write- / read-write access)	108
3.5.4 Important DCP Module Accesses	109
3.5.4.1 GeneralStatus (group write- / read-write / active access)	109
3.5.4.2 Log-on / Log-off Front-end device at superior layer (module active- / write access)	111
3.5.5 Events	113
3.5.5.1 Channel events	113
3.5.5.2 Group events (in preparation)	114
3.5.5.3 Module events	114
4 Appendix	116
4.1 A – Shortcuts	116

4.2 Appendix B – Diagram of operating modes	117
4.3 Appendix C – Programming flowchart to store the settings permanently with help of General state save bit	118
4.4 Appendix D – Programming flowchart to store the configurations of the module permanently with help of General state save bit	119
4.5 Appendix E – Literature references	120
5 Manufacturer contact	120

1 General information

This Manual describes for one the CAN - EDCP crate controller commands and for the other the CAN - EDCP commands for High Voltage Devices.

1.1 Devices covered by this manual

All devices described in this manual have in common, that they support the CAN - EDCP (Enhanced device communication protocol for Controller Area Network).

- CC24 is the crate controller card for the 19" master crates with the iCS-2 (iseq Communication Server 2)
- CC23 is the crate controller card for the 19" slave crates
- EHS combines standard or high precision, high voltage sources in 19" format with fix or mixed output polarity, up to 32 channels per module are possible
- EHS FLEX combines standard or high precision, high voltage sources in 19" format with fix or mixed output polarity, up to 48 channels per module are possible
- EHS STACK combines standard or high precision, high voltage sources in 19" format with fix or mixed output polarity, up to 16 channels per module are possible
- EBS combines standard, bipolar current sink and high voltage sources in 19" format, up to 24 channels per module are possible
- EDS combines standard high voltage sources with fix output polarity, up to 48 channels per module are possible
- NHS combines standard or high precision high voltage sources in NIM format with fix or mixed output polarity, up to 6 channels per module are possible
- NHR combines standard or high precision high voltage sources in NIM format with switchable output polarity, up to 4 channels per module are possible

1.2 CAN-Bus Implementation

The data frame structure is matched to the message frame of the standard-format according to CAN specification 2.0B.

The data frame of the EDCP will be transferred as data word with n bytes length in the data field of the CAN frame according to the specific demand of the related access. Therefore this results into a Data Length Code (DLC) of the CAN-protocol of n.

The 11 bit identifier of the CAN protocol will be used for addressing of the Front-end devices and classification of data write, data request, data reply and alarm messages.

In following every bit of the 11 bit identifier will be described:

ID10 (C)	1	Crate controller command
	0	High voltage source command
ID9 (P)	1	Alarm
	0	Normal messages

Notes:

ID8 to ID3 (A5..A0) allow the addressing of 64 Front-end devices (ID3: Address bit 0;...; ID8: Address bit 5)

ID2 (NMT)	1	Send a broadcast message defined as network management message (NMT)
	0	Normal or alarm message
ID1	1	Reply of a data request
	0	No data request
ID0 (DATA_DIR)	1	Data request
	0	Data write

That means all "even" CAN-ports (Identifier) are interpreted as 'Write ports' all "odd" CAN ports as 'Read ports'.

Only if the Front-end device is not registered at the controller or if it does not receive valid data during a longer time period (ca. 1 min), then it will actively send the registration frame with DATA_DIR = 1. The RTR Bit is always set to zero.

In one CAN segment modules with unequal identifier and equal bit rate are allowed only. The factory fixed bit rate is written on the sticker at the side panel.

2 Crate Controller CC24/23

2.1 Data types

UI1:	One byte unsigned integer (8 bit)
CHAR:	One ASCII character (8 bit)
UI4:	Four byte unsigned integer (32 bit)
R4:	Four byte floating point IEEE-754, single precision

All data on the CAN bus is in big endian format, i.e. for UI4 and R4, the highest data byte is transmitted first.

2.2 Access rights

R = Read only: the register can only be read

R/W = Read/write: the register can be read and written

R/C = Read/clear: the register can be read and cleared

2.3 NMT CAN commands (broadcast messages)

The following NMT commands (CAN-ID 0x004) are handled by the Crate Controller:

- NMT_DATAID_START (0xC4)
 - Switches from stop mode to normal operation
 - Message is forwarded to the backplane (and therefore to the modules)
- NMT_DATAID_STOP (0xC8)
 - Switches from normal operation to stop mode to allow the command NMT_RESET_CAN
 - Message is forwarded to the backplane (and therefore to the modules)
- NMT_DATAID_RESET_CAN (0xCC)
 - Re-initializes all CAN interfaces
 - Clears all transmit buffer
 - Clears all statistic registers
 - Message is forwarded to the backplane (and therefore to the modules)
 - Re-initializes the modules CAN interface
 - Modules starts to send their Log-On message

A short delay (10 milliseconds) should be kept between the commands NMT_STOP and NMT_RESET_CAN, so that all messages can be forwarded correctly to the modules.

2.4 Crate Controller commands

2.4.1 Crate Controller Uptime

Crate Controller Uptime 0x1113 UI4 R

This register returns the crate controllers uptime in seconds.

Access	CAN-ID	DLC	DATA_ID	Data_3	Data_2	Data_1	Data_0
Request	0x601	2	0x1113				
Answer	0x604	6	0x1113	Crate Uptime UI4			

2.4.2 Crate Controller Serial Number

Crate Controller Serial Number 0x1200 UI4 R

This register returns the crate controllers serial number.

Access	CAN-ID	DLC	DATA_ID	Data_3	Data_2	Data_1	Data_0
Request	0x601	2	0x1200				
Answer	0x604	6	0x1200	Crate Serial Number UI4			

2.4.3 Crate Controller Firmware Release

Crate Controller Firmware Release 0x1201 UI1[4] R

This register returns the crate controllers firmware release.

Access	CAN-ID	DLC	DATA_ID	Data_3	Data_2	Data_1	Data_0
Request	0x601	2	0x1201				
Answer	0x604	6	0x1201	Release 1	Release 2	Release 3	Release 4

2.4.4 Crate Controller Firmware Name

Crate Controller Firmware Name 0x1203 CHAR[6] R

This register returns the crate controllers firmware name.

Access	CAN-ID	DLC	DATA_ID	Data_5	Data_4	Data_3	Data_2	Data_1	Data_0
Request	0x601	2	0x1203						
Answer	0x604	8	0x1203	'E'	'C'	'H'	'4'	'x'	'A'

2.4.5 Crate Controller Article Description

Crate Controller Article Description 0x1209 CHAR[] R

This register returns the crate controllers article description. Depending on the length of the article description, multiple CAN messages may be sent. The description is terminated by a zero character.

Access	CAN-ID	DLC	DATA_ID	Data_5	Data_4	Data_3	Data_2	Data_1	Data_0
Request	0x601	2	0x1209						
Answer	0x604	3...8	0x1209	0	'C'	'C'	'2'	'4'	0

2.4.6 Crate Controller Control

Crate Controller Control

0x1A01

UI4

R/W

The register Crate Controller Control sets crate functions.

Access	CAN-ID	DLC	DATA_ID	Data_3	Data_2	Data_1	Data_0
Request	0x601	2	0x1A01				
Answer	0x604	6	0x1A01	Crate Control UI4			
Set	0x600	6	0x1A01	Crate Control UI4			

Bit31	Bit30	Bit29	Bit28	Bit27	Bit26	Bit25	Bit24
res (0)	res (0)	do Set Legacy Mode	set Legacy Mode	do Set Auto Power On	set Auto Power On	do Set Crate Enable Active	set Crate Enable Active
Bit23	Bit22	Bit21	Bit20	Bit19	Bit18	Bit17	Bit16
res (0)	res (0)	res (0)	res (0)	res (0)	res (0)	res (0)	res (0)
Bit15	Bit14	Bit13	Bit12	Bit11	Bit10	Bit09	Bit08
res (0)	res (0)	res (0)	res (0)	res (0)	res (0)	res (0)	res (0)
Bit07	Bit06	Bit05	Bit04	Bit03	Bit02	Bit01	Bit00
res (0)	res (0)	res (0)	res (0)	res (0)	res (0)	do Clear Statistic	do Clear Events

Status Bit	Description
do Clear Events	Clears the crates event status register. This bit can only be written, it always reads zero.
doClear Statistic	Clears the crates statistic registers. This bit can only be written, it always reads zero.
	If this bit is set to one, the high voltage channels can only be turned on, if the pin Crate Enable at the CONTROL connector is pulled high. This bit can only be changed if the backplane is powered off and the bit do Set Crate Enable Active is set to one.
do Set Crate Enable Active	This bit masks the bit set Crate Enable Active. If this bit is zero, the bit set Crate Enable Active is ignored. This bit can only be written, it always reads zero.
set Auto Power On	If this bit is set to one, the backplane is automatically turned on after the mains line is plugged in. Otherwise, the backplane stays off and must be turned on by the POWER ON switch or by remote control. This bit can only be changed if the bit do Set Auto Power On is set to one.
do Set Auto Power On	This bit masks the bit set Auto Power On. If this bit is zero, the bit set Auto Power On is ignored. This bit can only be written, it always reads zero.
set Legacy Mode	If this bit is set to one, the controller operates in Legacy Mode. In this mode, the modules can be controlled by CAN bus connected to CAN1 or CAN2. Note that in this mode, the internal services like isegHAL, iCSservice, SNMP, EPICS can not be used to control the modules. This bit can only be changed if the backplane is powered off and the bit do Set Legacy Mode is set to one.
do Set Legacy Mode	This bit masks the bit set Legacy Mode. If this bit is zero, the bit set Legacy Mode is ignored. This bit can only be written, it always reads zero.

2.4.7 Crate Controller Status

Crate Controller Status

0x1A00

UI4

R

The Crate Controller Status contains the *actual* status. The bits will be set or reset depending on the crates status.

Access	CAN-ID	DLC	DATA_ID	Data_3	Data_2	Data_1	Data_0
Request	0x601	2	0x1A00				
Answer	0x604	6	0x1A00	Crate Status UI4			

Bit31	Bit30	Bit29	Bit28	Bit27	Bit26	Bit25	Bit24
res (0)	res (0)	res (0)	res (0)	CAN Bus Error Apalis	CAN Bus Error Backplane	CAN Bus Error CAN1	CAN Bus Error CAN2
Bit23	Bit22	Bit21	Bit20	Bit19	Bit18	Bit17	Bit16
res (0)	res (0)	Crate Fast Off	Crate Enabled	Shut Down	High Voltage On	Power Fail	Power On
Bit15	Bit14	Bit13	Bit12	Bit11	Bit10	Bit09	Bit08
res (0)	res (0)	res (0)	Sum Error	High +3.3 CC	Low +3.3 CC	High +5 CC	Low +5 CC
Bit07	Bit06	Bit05	Bit04	Bit03	Bit02	Bit01	Bit00
High Temperature	Service	High +24 Backplane	Low +24 Backplane	High +5 Backplane	Low +5 Backplane	High +24 Battery	Low +24 Battery

Status Bit	Description
CAN Bus Error Apalis	The internal CAN bus between the Crate Controller and the Apalis is in error state
CAN Bus Error Backplane	The internal CAN bus between the Crate Controller and the HV modules is in error state
CAN Bus Error CAN1	The external CAN bus connected to CAN1 is in error state
CAN Bus Error CAN2	The external CAN bus connected to CAN2 is in error state
High-Voltage-On	Backplane is powered on and at least one channel within the crate has Status.isOn or measured voltage > 63 V The front panel LED HV-ON is derived from this bit.
Power-On	Backplane is powered on (modules are supplied with voltage) The front panel LED Status lights green when Power-On is set and no supply error exists. The front panel LED Status lights red when Power-On is set and a supply error exists.
Power-Fail	AC line power fail detected. Crate without UPS: high voltage is turned fast off Crate with UPS: high voltage is turned off with ramp after the wait time
High Temperature	At least one modules or the crate controller have high temperature. The high voltage is turned off with the configured voltage ramp speed.
Shut Down	If the front button POWER ON is pressed for more than 10 seconds, this bit is set for approx. 1 minute. This is used to perform a shut down of the embedded crate computer.
Sum Error	This bit is set, whenever one of the bits Power Fail, High Temperature, Service, High Supply, Low Supply or Crate Fast Off is set or if Crate Enabled is cleared.
Service	A fatal error occurred. Contact service.

Status Bit	Description
High Supply X	Measured voltage X exceeds the upper limit.
Low Supply X	Measured voltage X exceeds the lower limit.
Crate Enabled	If the crate is enabled, it is possible to turn on high voltage for all channels. The crate is enabled, if the Crate Control bit set Crate Enable Active is not set, or if the CONTROL pin Crate Enable is pulled high.
Crate Fast Off	If the CONTROL pin Crate Fast Off is turned high, the high voltages are shut down without ramp.

2.4.8 Crate Controller Event Status

Crate Controller Event Status

0x1A02

UI4

R/C

The Event Status bits are set together with the status bits. Unlike Status bits, Event Status bits are not reset automatically. They have to be reset by the user, by writing an 1 to this event bit. All Event Status bits are reset by the Crate Control bit do Clear.

Access	CAN-ID	DLC	DATA_ID	Data_3	Data_2	Data_1	Data_0
Request	0x601	2	0x1A02				
Answer	0x604	6	0x1A02	Crate Event Status UI4			
Clear	0x600	6	0x1A02	Crate Event Status UI4			

Bit31	Bit30	Bit29	Bit28	Bit27	Bit26	Bit25	Bit24
res (0)	res (0)	res (0)	res (0)	res (0)	res (0)	res (0)	res (0)
Bit23	Bit22	Bit21	Bit20	Bit19	Bit18	Bit17	Bit16
res (0)	res (0)	res (0)	res (0)	Shut Down	High Voltage On	Power Fail	Power On
Bit15	Bit14	Bit13	Bit12	Bit11	Bit10	Bit09	Bit08
res (0)	res (0)	res (0)	Sum Error	High +3.3 CC	Low +3.3 CC	High +5 CC	Low +5 CC
Bit07	Bit06	Bit05	Bit04	Bit03	Bit02	Bit01	Bit00
High Temperature	Service	High +24 Backplane	Low +24 Backplane	High +5 Backplane	Low +5 Backplane	High +24 Battery	Low +24 Battery

2.4.9 Crate Controller Event Mask

Crate Controller Event Mask

0x1A3

UI4

R/W

The Event Mask is defined for compatibility to the module EDCP command set, but not used at the moment.

Access	CAN-ID	DLC	DATA_ID	Data_3	Data_2	Data_1	Data_0
Request	0x601	2	0x1A03				
Answer	0x604	6	0x1A03	Crate Event Mask UI4			
Set	0x600	6	0x1A03	Crate Event Mask UI4			

2.4.10 Crate Controller Fan Speed Percent

Crate Controller Fan Speed Percent

0x1A04

R4

R

This register returns the crates fan speed in percent (0...100). The fan speed is regulated according to the maximum crate temperature. The maximum temperature is collected over all modules and the crate controller. The maximum fan speed is reached at approx. 45° C.

Access	CAN-ID	DLC	DATA_ID	Data_3	Data_2	Data_1	Data_0
Request	0x601	2	0x1A04				
Answer	0x604	6	0x1A04	Crate Fan Speed R4			

2.4.11 Crate Power On/Off

Crate Power On/Off

0x1A05

UI1

R/W

This register controls the crates power on (1) or off (0) function.

Access	CAN-ID	DLC	Data_ID	Data_0
Request	0x601	2	0x1A05	
Answer	0x604	3	0x1A05	0x00
Set On	0x600	3	0x1A05	0x01
Set Off	0x600	3	0x1A05	0x00

2.4.12 Crate Chassis Identification

Crate Controller Chassis Identification

0x1A06

UI6

R

This register contains the 1-Wire serial number that is read from the crate chassis. This number is an unique number for every crate. The six bytes are the 1-Wire serial number without manufacturer code and without CRC.

This register is filled once the backplane was turned on for at least ten seconds.

Access	CAN-ID	DLC	DATA_ID	Data_5	Data_4	Data_3	Data_2	Data_1	Data_0
Request	0x601	2	0x1A06						
Answer	0x604	8	0x1A06	Crate Chassis Identification UI6					

2.4.13 Crate Backplane Type

Crate Backplane Type

0x1A07

UI2

R/C

This register contains the backplane type for the master and all slave crates.

Access	CAN-ID	DLC	DATA_ID	Data_1	Data_0
Request	0x601	2	0x1A07		
Answer	0x604	4	0x1A07	Crate Backplane Type UI2	
Clear	0x600	2	0x1A07		

A write access to this register forces a new scan of the backplane type register. It takes approx. two seconds to scan the system and fill the register again.

Bit31	Bit30	Bit29	Bit28	Bit27	Bit26	Bit25	Bit24
Bit23	Bit22	Bit21	Bit20	Bit19	Bit18	Bit17	Bit16
Bit15	Bit14	Bit13	Bit12	Bit11	Bit10	Bit09	Bit08
Reserved	Reserved	Reserved	Green Slave 5	Green Slave 4	Green Slave 3	Green Slave 2	Green Slave 1
Bit07	Bit06	Bit05	Bit04	Bit03	Bit02	Bit01	Bit00
Reserved	Reserved	Yellow Slave 5	Yellow Slave 4	Yellow Slave 3	Yellow Slave 2	Yellow Slave 1	Master

Bit meaning		
0	Backplane type iseg:	backplane is sequential
1	Backplane type wiener:	backplane is not sequential
Bit position		
0	Master crate	
1...5	Slave crates on CAN line yellow	= (1 = Slave 0, 2 = Slave 1, ...)
8...12	Slave crates on CAN line green	= (8 = Slave 0, 9 = Slave 1, ...)

2.4.14 Crate Temperature Sensor

Crate Temperature Sensor

0x2001

R4

R

This register contains the actual temperature for different sensors.

Sensor 0 and 1 are placed at the crate controller. Sensor 2 is the maximum temperature in the crate (collected over all modules and the crate controller). The maximum temperature is used to control the crates fan speeds.

If the request is done with DLC = 2, all temperature sensors are returned in three CAN messages. If the request is done with DLC = 3 and a specific sensor, only this sensor is returned.

Access	CAN-ID	DLC	DATA_ID	Sensor	Data_3	Data_2	Data_1	Data_0
Request	0x601	2	0x2001					
Answer	0x604	7	0x2001	0x00	Crate Temperature 0 R4			
	0x604	7	0x2001	0x01	Crate Temperature 1 R4			
	0x604	7	0x2001	0x02	Crate Temperature 2 R4			
Request	0x601	3	0x2001	0x01				
Answer	0x604	7	0x2001	0x01	Crate Temperature 0 R4			

2.4.15 Crate Supply Measurement

Crate Supply Measurement

0x2002

R4

R

This register contains the measured supply voltages.

If the request is done with DLC = 2, all supply measurement values are returned in consecutive CAN messages. If the request is done with DLC = 3 and a specific supply number, only this measurement value is returned.

Access	CAN-ID	DLC	DATA_ID	Supply	Data_3	Data_2	Data_1	Data_0
Request	0x601	2	0x2002					
Answer	0x604	7	0x2002	0x00	Crate Supply Measurement 0 R4			
	0x604	7	0x2002	0x01	...			
	0x604	7	0x2002	0x08	Crate Supply Measurement 8 R4			

2.4.16 Crate Supply Nominal

Crate Supply Nominal

0x2003

R4

R

This register contains the nominal supply voltages.

If the request is done with DLC = 2, all supply nominal values are returned in consecutive CAN messages. If the request is done with DLC = 3 and a specific supply number, only this nominal value is returned.

Access	CAN-ID	DLC	DATA_ID	Supply	Data_3	Data_2	Data_1	Data_0
Request	0x601	2	0x2003					
Answer	0x604	7	0x2003	0x00	Crate Supply Nominal 0 R4			
	0x604	7	0x2003	0x01	...			
	0x604	7	0x2003	0x08	Crate Supply Nominal 8 R4			

2.5 Statistic registers

For each CAN bus, multiple statistic registers are kept. The Crate Controller owns four CAN busses, which are numbered the following way:

- 0) CAN PC
- 1) CAN Backplane
- 2) CAN 2
- 3) CAN 1

The existing statistic registers are described below.

If a request message without a CAN bus number (DLC = 2) is received, the statistic register for all four CAN busses are returned.

The statistic counter are incremented by the crate controller and can be reset by the NMT command NMT_CAN_RESET together with the CAN interfaces or by the Crate Control bit do Clear Statistic.

2.5.1 CAN Bus Received

CAN Bus Received 0x2040 UI4 R

This register counts the received messages for the given CAN bus.

Access	CAN-ID	DLC	DATA_ID	CAN bus	Data_3	Data_2	Data_1	Data_0
Request	0x601	3	0x2040	00				
Answer	0x604	7	0x2040	00	Received Messages UI4			

2.5.2 CAN Bus Receiver Overrun

CAN Bus Receiver Overrun 0x2041 UI4 R

This register counts the receive buffer overruns for the given CAN bus. A receive buffer overrun occurs, if a CAN message could not be read in time from the CAN bus.

This register should always be zero.

Access	CAN-ID	DLC	DATA_ID	CAN bus	Data_3	Data_2	Data_1	Data_0
Request	0x601	3	0x2041	00				
Answer	0x604	7	0x2041	00	Receiver Overrun Messages UI4			

2.5.3 CAN Bus Transmitted

CAN Bus Transmitted 0x2042 UI4 R

This register counts the transmitted messages for the given CAN bus.

Access	CAN-ID	DLC	DATA_ID	CAN bus	Data_3	Data_2	Data_1	Data_0
Request	0x601	3	0x2042	00				
Answer	0x604	7	0x2042	00	Transmitted Messages UI4			

2.5.4 CAN Bus Transmit Buffer Full

CAN Bus Transmit Buffer Full

0x2043

UI4

R

This register counts the messages, that could not be sent to the given CAN bus because of full transmit buffer.

Access	CAN-ID	DLC	DATA_ID	CAN bus	Data_3	Data_2	Data_1	Data_0
Request	0x601	3	0x2043	00				
Answer	0x604	7	0x2043	00	Transmit Buffer Full UI4			

2.5.5 CAN Bus Dropped

CAN Bus Dropped

0x2044

UI4

R

This register counts the messages that were received from the given CAN bus and could not be routed because of unclear destination.

This register should always be zero.

Access	CAN-ID	DLC	DATA_ID	CAN bus	Data_3	Data_2	Data_1	Data_0
Request	0x601	3	0x2044	00				
Answer	0x604	7	0x2044	00	Dropped Messages UI4			

2.5.6 CAN Bus Error

CAN Bus Error

0x2045

UI4

R

This register is incremented every second when the given CAN bus is in error state.

Access	CAN-ID	DLC	DATA_ID	CAN bus	Data_3	Data_2	Data_1	Data_0
Request	0x601	3	0x2045	00				
Answer	0x604	7	0x2045	00	Error Seconds UI4			

2.5.7 CAN Bus Throttle

CAN Bus Throttle

0x2046

UI4

R

This register counts the number of generated throttle messages for the given CAN bus.

Access	CAN-ID	DLC	DATA_ID	CAN bus	Data_3	Data_2	Data_1	Data_0
Request	0x601	3	0x2046	00				
Answer	0x604	7	0x2046	00	Throttle Messages UI4			

2.5.8 CAN Bus Status

CAN Bus Status 0x2047 UI4 R

This register holds the current status for the given CAN bus.

Access	CAN-ID	DLC	DATA_ID	CAN bus	Data_3	Data_2	Data_1	Data_0
Request	0x601	3	0x2047	00	1	2	3	4
Answer	0x604	7	0x2047	00	Bus Status UI4			

The CAN Bus Status register contains the following information:

- Receiver bus status: Ok (0), Warning (1), Error (2), Bus off (3)
- Transmitter bus status: Ok (0), Warning (1), Error (2), Bus off (3)
- CAN hardware activated
- CAN hardware synchronized with CAN bus
- CAN hardware in special mode (initializing, sleep, listen-only, loopback).
These bits should not be set in normal operation conditions.

The CAN hardware status is refreshed at the time of the request.

Bit31	Bit30	Bit29	Bit28	Bit27	Bit26	Bit25	Bit24
Bit23	Bit22	Bit21	Bit20	Bit19	Bit18	Bit17	Bit16
		Loopback	Listen Only	Enabled	Synchronized	Sleeping	Initializing
Bit15	Bit14	Bit13	Bit12	Bit11	Bit10	Bit09	Bit08
Transmitter bus status (0 = Ok, 1 = Warning, 2 = Error, 3 = Bus off)							
Bit07	Bit06	Bit05	Bit04	Bit03	Bit02	Bit01	Bit00
Receiver bus status (0 = Ok, 1 = Warning, 2 = Error, 3 = Bus off)							

2.5.9 CAN Bus Disabled

CAN Bus Disabled 0x2048 UI4 R

This register counts the number of dropped messages because the given CAN bus is not enabled (e.g. backplane is off).

Access	CAN-ID	DLC	DATA_ID	CAN bus	Data_3	Data_2	Data_1	Data_0
Request	0x601	3	0x2048	00				
Answer	0x604	7	0x2048	00	Disabled Messages UI4			

2.5.10 CAN Bus Btrate

CAN Bus Btrate 0x2049 UI4 R

This register holds the current bit rate for the given CAN bus.

Access	CAN-ID	DLC	DATA_ID	CAN bus	Data_3	Data_2	Data_1	Data_0
Request	0x601	3	0x2049	00				
Answer	0x604	7	0x2049	00	Btrate UI4			

2.6 Examples

CC = Crate-Controller, PC = Controlling PC

Message	Direction	CAN-ID	DLC	Data ID	Data	Data	Data	Data
Log-On Request	CC → PC	601	3	D8 00	2E			
Log-On Confirmation	CC → PC	600	2	D8 01				
Status Request	PC → CC	601	2	1A 00				
Status Answer	CC → PC	604	6	1A 00	00	00	00	00
Crate Power On	PC → CC	600	3	1A 05	01			
Crate Power Off	PC → CC	600	3	1A 05	00			
Fan Speed Request	PC → CC	601	2	1A 04				
Fan Speed Answer	CC → PC	604	6	1A 04	40	A0	00	00

Request Temperatures and Supplies (group request)

Message	CAN-ID	DLC	DataID	Channel	Data	Data	Data	Data	Value
Request all Temperatures	601	2	20 01						
Temperature 0	604	7	20 01	00	41	EF	0D	B0	29,9 °C
Temperature 1	604	7	20 01	01	41	ED	66	30	29,7 °C
Temperature 2	604	7	20 01	02	41	EF	0D	B0	29,9 °C
Request all Measured Supplies	601	2	20 02						
Backplane +24	604	7	20 02	00	41	BE	75	98	23,8 V
Reserved	604	7	20 02	01	00	00	00	00	0 (res)
Backplane +5	604	7	20 02	02	40	A0	51	EC	5,01 V
Reserved	604	7	20 02	03	00	00	00	00	0 (res)
Reserved	604	7	20 02	04	00	00	00	00	0 (res)
Supply +5	604	7	20 02	05	40	9F	A2	1B	4,99 V
Supply +3.3	604	7	20 02	06	40	53	2E	1C	2,99 V
Reserved	604	7	20 02	07	00	00	00	00	0 (res)
Battery + 24	604	7	20 02	08	41	D0	CC	CD	26,1 V

3 Commands for High Voltage Devices

3.1 General information

Each single HV channel is independently controllable. The modules are software controlled via CAN-Interface through a PC or similar controller.

Using an iseg crate combined with a CC24 controller or an iCSmini as stand alone iseg Communication Server WEB-services, Remote-service, EPICS and SNMP are possible via Ethernet.

We offer a comfortable control programs:

Control program	Operating system	Interfaces	Protokoll, Standard
isegControl2	Windows, Linux and MAC OS	CAN, Ethernet	EDCP, WS
isegControl1	Windows and Linux	CAN, Ethernet	EDCP, OPC DA, SNMP
isegCANHVControl	Windows	CAN	EDCP

Using the w-ie-ner Mpod crate it is possible to control up to 10 modules via Ethernet-SNMP Interface.

3.2 General settings and options

Please note that there are additional hardware features for these devices in this manual called **OPTION**. The use of an access without the hardware implementation will be described under **OPTION** in manual.

Devices with different bit rate settings do not work on the same CAN bus.

The actual channel and module values (measurement and status) are refreshed approximately every 10ms x number of channels.

The board temperature values are refreshed approximately every 5 up to 10 s.

3.3 Operation principle

3.3.1 Remote interface control

The communication between an application and the module is performed by the transmission of data items. A data item contains information to be submitted to and/or received from the module. It can represent a specific quantity or a union of single bits. The majority of the data items are standard for all Multi-Channel HV modules and are described in the interface manual in detail. Data items for optional functions are described in the interface options manual.

A general distinction can be made between data items to control individual HV channels and data items to control the HV modules with the sum of all contained channels.

The former group includes the following data items, which exist for every single HV channel:

- items to handle channel status, control and event's
- items to set the voltage or current, bounds, interlock maximum and minimum
- items to read the measured voltage and current
- items to read the nominal voltage and current

The following data items control the properties of the whole HV module. These items exist only once per module:

- items to handle module status, control and events
- voltage ramp speed (is the same for all HV channels)
- current ramp speed (is the same for all HV channels)
- restart time after recalling set values
- maximum set voltage
- maximum set current
- ADC samples per second
- digital filter setting
- power supply voltages
- temperature
- maximum voltage
- maximum current

3.3.2 Channel and Module

A high voltage channel is a single high voltage source and measurement circuit. The channel has different operation modes and provides different measurements and status flags.

A module is the combination of one or more high voltage channels in a common housing. Examples are EHS with up to 48 channels. Beside the combination of all channels, the module provides some more measurement and status information for the whole device.

Module commands set a module-wide function or return a module-wide status or measurement value. Channel commands, in contrast, operate on a specific channel. High voltage device operation modes

3.3.3 Terminology

Syntax	Declaration
V_{nom}	Voltage nominal, the maximum possible output voltage
I_{nom}	Current nominal, the maximum possible output current
V_{set}	Voltage Set, the user-controllable demanded output voltage
V_{meas}	Voltage Measure, the actual measured output voltage
V_{lim}	Voltage Limit. Can be a hardware or a software limit and serves two purposes: <ol style="list-style-type: none"> 1. It limits the upper value of V_{set} to the given limit value: $V_{set} \leq V_{lim}$ 2. It generates the Channel Status is Voltage Limit if V_{meas} exceeds the limit value (the exact threshold value is device dependent)
I_{set}	Current Set, the user-controllable demanded output current
I_{meas}	Current Measure, the actual measured output current
I_{lim}	Current Limit. Can be a hardware or a software limit and serves two purposes: <ol style="list-style-type: none"> 1. It limits the upper value of I_{set} to the given limit value: $I_{set} \leq I_{lim}$ 2. It generates the Channel Status is Current Limit if I_{meas} exceeds the limit value (the exact threshold value is device dependent)
V_{bounds}	Voltage bounds, a tolerance tube $V_{set} \pm V_{bounds}$ around V_{set} . If V_{meas} exceeds this tolerance in either direction, the Channel Status is Voltage Bounds is generated. (condition: no ramping)
I_{bounds}	Current bounds, a tolerance tube $I_{set} \pm I_{bounds}$ around I_{set} . If I_{meas} exceeds this tolerance in either direction, the Channel Status is Current Bounds is generated. (condition: no ramping)

3.3.4 Channel operation modes

Operation Mode	Description	
Off	The channel is off, it does not generate high voltage. If all status conditions are satisfied, the channel can be turned on.	
On	The channel is actively generating high voltage.	
Ramping	The channel ramps to the V_{set} if turned on or is turns off with the programmed ramp speed. EHS FLEX devices provide voltage and current ramp speed setting per channel in V/s resp. A/s. All other devices have a common voltage and current ramp speed for all channels in %/s.	
Emergency Off	The channel is shut down without ramp. Afterwards, it stays in Emergency Off until Emergency Clear is given.	
Emergency Clear	The channel leaves the state Emergency Off and goes to state Off. If the channel is not in Emergency Off, nothing happens.	
Kill Enable active	The mode Kill Enable provides a higher safety. This mode is module-wide and therefore affects all channels. The channel will got to Trip and shut down without ramp when any of the following conditions occur:	
	<div><div><div><div><div>$V_{meas} > V_{lim}$</div><div>$I_{meas} > I_{lim}$</div><div>$I_{meas} > I_{set}$</div></div><div>OR</div><div><div>$V_{meas} > V_{set} + V_{bounds}$</div><div>$V_{meas} < V_{set} - V_{bounds}$</div><div>$I_{meas} < I_{set} - I_{bounds}$</div></div></div></div></div>	
Kill Enable inactive	<div>If of the limits above will happen:</div> <div><div><div>Switch the channel from operating mode voltage control into current control if there is a HV hardware with current control.</div><div>HV hardware without current control – a trip in the channel hardware will switch off the high voltage generation. Then the module automatically starts to restore the HV via a voltage ramp to the set voltage. If the HV is held during the trip, e.g. by an external capacity load, the recovery of the HV starts from the voltage at the output. The auto-recovery of the voltage is performed only once in a time span of 10 minutes. If the channel trips a second time within the 10 minutes the HV will be switched off.</div></div></div>	
Constant Voltage	The channel operates as constant voltage source, that means $V_{meas} \approx V_{set}$ and $I_{meas} < I_{set}$	
Constant Current	The channel operates as constant current source, that meas $V_{meas} < V_{set}$ and $I_{meas} \approx I_{set}$	
Delayed Trip	This is a special mode of Constant Current. If this mode is activated, and I_{meas} reaches or exceeds I_{setr} , the Channel Status is Current Trip is generated. Depending on the trip configuration, the channel may stay in Constant Current, or turn off with ramp or shut down without ramp. Trip also happens when Kill Enable is active and any of the Kill conditions occur.	
External Inhibit	External Inhibit is a hardware line to control the high voltage generation. Depending on the device, there might be one External Inhibit per channel or one External Inhibit for all channels. Some devices always shut down the high voltage without ramp on External Inhibit, some devices allow to configure this function.	
	External Inhibit individual per channel	EHS, EHS STACK, NHS and NHR
	External Inhibit is configurable	EHS, EHS STACK, NHS and NHR
Input Error	An input error occurs, if an invalid command or parameter is given, or the parameter of a command exceeds the allowed range. Example: setting a V_{set} of 4000 V for a channel with V_{nom} of 3000 V.	
Output Polarity	NHR and SHR devices provide switchable output polarities, positive and negative.	
Output Mode	NHR and SHR devices provide switchable output modes with different voltage and current combinations, e.g. 6kV/1mA and 2kV/3mA.	
Voltage Bottom	EHS Stack provide a special feature to avoid voltage rebound effects that might follow a discharge in GEM detectors.	

3.3.5 Status and Event generation

Channel as well as Module have status and event registers. Both registers contain similar condition bits. The difference between both register types is, that status bits are set and cleared by the device according to the current conditions. Event bits, however, are only set by the device and must be cleared explicitly by the user.

For example, the Status bit is Constant Current indicates that the channel *is now* in constant current mode. The Event bit Event Constant Current in contrast indicates, that the channel has been (or still is) in constant current mode since the last clearing of this bit.

It is thereby possible to clear all status flags at once or to just clear individual bits. In general it is not possible to clear an event bit if the corresponding status bit is still set. The status and event registers are described in detail in section Status and Event registers starts from page 47.

3.3.6 Additional current measuring range (Option)

Some modules are equipped with a second current measuring range to capture small current values. The range is automatically detected. In the second range the values will be converted with a higher resolution. The value is in the same floating point format as in the first range. The device control protocol allows to request which range is active.

INFORMATION



INFORMATION

The second range cannot be activated if:

- function KillEnable is on.
- a voltage ramp up is running.
- the module operates in CC mode.

3.3.7 Control and Status items

3.3.7.1 Controls

Control items encapsulate a number of bits which allow to switch On or Off specific functions. There is a control item for the module (ModuleControl) and one for each channel (ChannelControl). Control bits that are used to switch a function permanently are named "set..." (e.g. "setON" to switch a channel On or Off). Bits that initiate the execution of a task just once are named "do..." (e.g. "doClear" to clear all events).

3.3.7.2 Status and events

Status items contain a register that encapsulates bits that indicate the current status of the module or channel. Status bits are named starting with "is...". The status always displays only present conditions, if a condition has changed corresponding status bits will be updated.

Unlike the status, event items record previous conditions (e.g. exceeded limits, trips etc.). If an event is registered the corresponding event bit is set permanently to "1" and will keep the information until explicitly reset. Event bits are named starting with "E...".

status Summary of actual condition of module, channel or group

event Event, characterizes a former or actual special condition of module, channel or group

3.3.7.3 Event status and event mask

To avoid the need for checking all event sources permanently for incoming events, the module provides a hierarchical chain for the combination of the events to a single status bit. The structure for the event processing allows a combination of events coming from the module status, the status of the channels and the group status. For each event status item a corresponding event mask item is provided. The event mask defines which event status bits contribute to the combined event status.

Event status Events that have been registered so far

Event mask Filter to define which individual events contribute to the summarized event

Between event status items and the corresponding mask is a bit by bit correspondence. The bits in the mask are named starting with "ME...". If the mask bit is set, the occurring of the respective event will activate the combined event. In turn these sum events are collected in an event status register and connected with an event mask register at this higher level.

CAUTION!



CAUTION!

If an event bit in the EventStatus is active and the corresponding bit in the EventMask is set, it is not possible to ramp up the voltage or to activate the HV generation if it has been switched off. To unblock this the EventStatus bits must be reset by writing "1" on the corresponding bit positions.

Individual events in the channel event status are starting point of the event combination logic.

First each event status bit for the channel is combined with the corresponding bit in the event mask using a logical AND. Then an event status bit for the channel is generated by combining all resulting bits with a logical OR. The full logical operation is given by

$$\begin{aligned} \text{EventChannelStatus}[n] = & (\text{Channel}[n].\text{EventVoltageLimit AND Channel}[n].\text{MaskEventVoltageLimit}) \text{ OR} \\ & (\text{Channel}[n].\text{EventCurrentLimit AND Channel}[n].\text{MaskEventCurrentLimit}) \text{ OR} \\ & (\text{Channel}[n].\text{EventCurrentTrip AND Channel}[n].\text{MaskEventCurrentTrip}) \text{ OR} \\ & (\text{Channel}[n].\text{EventExtInhibit AND Channel}[n].\text{MaskEventExtInhibit}) \text{ OR} \\ & (\text{Channel}[n].\text{EventVoltageBounds AND Channel}[n].\text{MaskEventVoltageBounds}) \text{ OR} \\ & (\text{Channel}[n].\text{EventCurrentBounds AND Channel}[n].\text{MaskEventCurrentBounds}) \text{ OR} \\ & (\text{Channel}[n].\text{EventCoonstantVoltage AND Channel}[n].\text{MaskEventConstantVoltage}) \text{ OR} \\ & (\text{Channel}[n].\text{EventConstantCurrent AND Channel}[n].\text{MaskEventConstantCurrent}) \text{ OR} \\ & (\text{Channel}[n].\text{EventEmergency AND Channel}[n].\text{MaskEventEmergency}) \text{ OR} \\ & (\text{Channel}[n].\text{EventEndOfRamp AND Channel}[n].\text{MaskEventEndOfRamp}) \text{ OR} \\ & (\text{Channel}[n].\text{EventOnToOff AND Channel}[n].\text{MaskEventOnToOff}) \text{ OR} \\ & (\text{Channel}[n].\text{EventInputError AND Channel}[n].\text{MaskEventInputError}) \end{aligned}$$

The result of the first step for all channels is stored in the register EventChannelStatus.

In the next step all bits of the EventChannelStatus are combined to a single status bit, using the corresponding mask (EventChannelMask). The logical operation is given by

$$\begin{aligned} \text{EventChannelActive} = & (\text{EventChannelStatus}[0] \text{ AND EventChannelMask}[0]) \text{ OR} \\ & (\text{EventChannelStatus}[1] \text{ AND EventChannelMask}[1]) \text{ OR} \\ & \dots \\ & (\text{EventChannelStatus}[n] \text{ AND EventChannelMask}[n]) \end{aligned}$$

A second branch in the event processing logic treats events generated by the status of the module. The following scheme applies to these module events:

$$\begin{aligned} \text{EventModuleActive} = & (\text{EventTemperatureNotGood AND MaskEventTemperatureNotGood}) \text{ OR} \\ & (\text{EventSupplyNotGood AND MaskEventSupplyNotGood}) \text{ OR} \\ & (\text{EventSafetyLoopNotGood AND MaskEventSafetyLoopNotGood}) \end{aligned}$$

A third branch combines events generated by groups (monitor group, timeout group, see chapter 3)

Group events are stored in the status register EventGroupStatus. The mask EventGroupMask is used to generate the combined bit EventGroupActive with the following operation:

$$\begin{aligned} \text{EventGroupActive} = & (\text{EventGroupStatus}[0] \text{ AND EventGroupMask}[0]) \text{ OR} \\ & (\text{EventGroupStatus}[1] \text{ AND EventGroupMask}[1]) \text{ OR} \\ & \dots \\ & (\text{EventGroupStatus}[32] \text{ AND EventGroupMask}[32]) \end{aligned}$$

Finally the three branches are combined to the bit IsEventActive in the register ModuleStatus:

$$\text{IsEventActive} = \text{EventChannelActive OR EventModuleActive OR EventGroupActive}$$

3.3.8 Summarizing channel characteristics into groups

The module provides a highly flexible group functionality. A group is a combination of all or a selection of channels with the ability to control or monitor a specified quantity or characteristic of all included channels. There are two classes of groups “Fix Groups” and “Variable Groups”. The former are predefined groups that allow to set single specification values in all channels. The latter are configurable groups that allow to customize the logical structure of the module to the logical structure of the application. They allow an arbitrary assignment of channels and provide a wide range of functionality, structured in four predefined group types. Up to 32 Variable Groups can be defined. The predefined group types are:

3.3.8.1 Set Group

sets a specified channel characteristic in all selected channels

no event generation

3.3.8.2 Status Group

represents the status (condition) of a channel characteristic for all channels

no event generation

3.3.8.3 Monitor Group

monitors the condition of a channel characteristic for selected channels

event generation when the condition changes

configurable response (e.g. switch off)

3.3.8.4 Timeout Group

monitors the current trip in selected channels

to employ this group the signal KillEnable must be turned off

Event generation only after expiry of a predefined time within which the trip condition must be active

configurable response (e.g. switch off)

3.3.8.5 Responses on events (Soft-Kill features)

Event generating groups can be configured to perform one out of four predefined responses if the event has been generated:

- shut down of the whole module without ramp
 - high voltage in all channels of the module is switched off
- switch off all channels that are members of the group without ramp
 - high voltage in all channels of the group is switched off
- switch off all channels that are members of the group with ramp
 - high voltage in all channels of the group is ramped down
- no response
 - no change

3.4 Communication via Interface

All modules are controlled via a serial CAN bus interface according to CAN bus specification 2.0A. The actual control protocol is the "Enhanced Device Control Protocol" and is explained more precisely in the following sections.

Furthermore it is implemented a second command set, which corresponds to the deprecated standard protocol "Device Control Protocol". The description of the Device Control Protocol is carried out in the corresponding manual (see Appendix).

We don't recommend to use this data points for actual applications.

3.4.1 Enhanced Device Control Protocol EDCP

The communication between the controller and the module is working according to the Enhanced Device Control Protocol EDCP, which has been designed for instruments of Multi-Channel systems by iseg Spezialelektronik GmbH. This protocol is working according to the master slave principle. Therefore, the control of the HV device through a controller in the superior layer is the master in this system, while the module (as a Front-end device with intelligence) is the slave.

The data exchange between the controller and the HV device is working with help of data frames. These data frames are made out of one direction bit DATA_DIR, one 16bit DATA_ID and further data bytes. The direction bit DATA_DIR defines whether the data frame is a write or read-write access. Write access means that the host writes data into the module, read-write access means that the host wants to read data from the module (this is the read access), and the module answers by a write access. The DATA_ID is characterized through the first bit of the data frame with DATA_ID.b15=0 of EDCP frames (DATA_ID.bit7=1 of standard DCP frames). In order to code the type of an access the bit14=1 for a **single channel** access (symbol **S**), b13=1 for a **group access** (symbol **G**) and b12=1 for a **module access** (symbol **M**).

The next tables will give an overview of the parts of the EDCP:

Access	DATA DIR	DATA_ID bits						CHN bits			
		Bit15	Bit14	Bit13	Bit12	Bit11	...	Bit1	Bit0	Bit7...	... Bit0
Enhanced DATA_ID	1/0	0	S	G	M						
Single channel CHN Write access	0	0	1	0	0	S11	...	S1	S0	C7	C0
Single channel CHN Read-write access	1/0	0	1	0	0	S11	...	S1	S0	C7	C0
Module Write access	0	0	0	0	1	M11	...	M1	M0		
Module Read-write access	1/0	0	0	0	1	M11	...	M1	M0		
Notes: S – single channel access G – group access M – module access S11 ... S0. - single channel access code M11 ... M0 – module access code C7 ... C0 – Channel multiplex byte CHN											

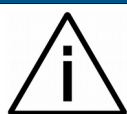
If the type of the data frame is a single channel access it will code the corresponding channel information with help of the next multiplex of channel byte (CHN).

If the type of the data frame is a module access then a DATA_ID is necessary only.

If the type of the data frame is a combination of a single channel and group instruction then it will code the corresponding channel members with help of the next 16bit word (symbol MBR) followed by an OFFSET byte to have a channel start index in steps of 16 (reserved at the moment).

Access	DATA DIR	DATA_ID bits								CHN / MBR bits		OFFSET
		Bit15	Bit14	Bit13	Bit12	Bit11	...	Bit1	Bit0	Nmax	Nmin	
Enhanced DATA_ID	1/0	0	S	G	M							
Single channel CHN of members MBR	1	0	1	1	0	S11	...	S1	S0	M15 to M0 (MBR)	0, 16 ,32 (reserved)	
Replay	0									C47 to C0 (CHN)		
Notes: M15 ... M0 – channel members, every HV channel between 0 and 15 can be added to the request by the corresponding member bit (HV channel 0 will be addressed by M0, HV channel 1 will be addressed by M1 and so on)												

INFORMATION



INFORMATION

MBR=0 will address all HV channels of the module, that's is important for modules with more than 16 HV channels.

When a HV device has received such a request message it will answer with multiple CAN frames for all channels which are addressed as members (MBR).

Access	DATA DIR	DATA_ID bits							Data
		Bit15	Bit14	Bit13	Bit12	...	Bit0		
Group of members MBR Write access	0	0	S	G	M	X	X		
Group of members MBR Read-write access	1	0	0	1	0	G11	G0		
	0								

The data format of data frame which are coded a group access without a combination of the **S** bit has to be take from the respective description in this manual.

These data frames correspond to a transfer into layer 3 (Network Layer) and layer 4 (Transport Layer) of the OSI model of ISO. The transmission medium is the CAN Bus according to specification 2.0A, related to level1 (Physical Layer) and level 2 (Data Link Layer).

3.4.1.1 Data formats

The data format on the network is big endian, i.e. on Intel computers, the value is stored byte-wise reverse. Please use some of the online analysis tools for IEEE-754 floating-point conversion in to the binary format.

UI1	unsigned character
SI1	signed character
UI2	unsigned short integer (16 bit)
UI4	unsigned integer (32 bit)
R4	float according to IEEE-754 single precision format

Example Vset:

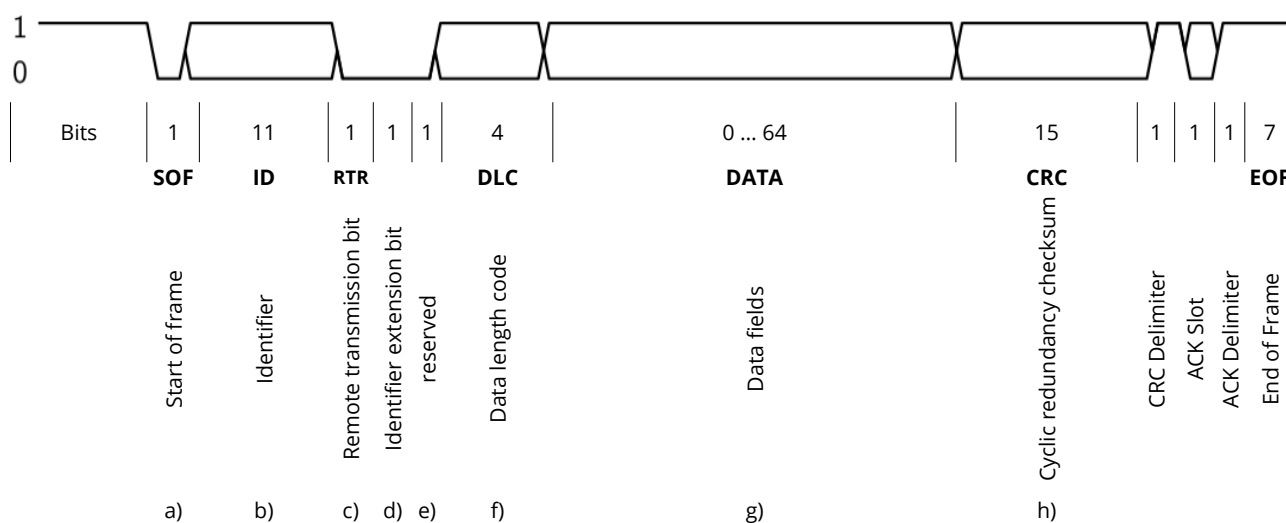
Floating point value = 1000 V:

Binary value in correspondence to IEEE-754 = 0x44 0x7a 0x00 0x00

Data bytes in the big-endian data range of CAN: 0x44 0x7a 0x00 0x00

Data-Bytes in computers using a little endian memory: 0x00 0x00 0x7a 0x44

3.4.2 CAN Data Frame



a) Start of frame

b) Identifier

	Bit10	Bit9	Bit8	Bit7	Bit6	Bit5	Bit4	Bit3	Bit2	Bit1	Bit0
Front-End Address	0	P	Addr5	Addr4	Addr4	Addr2	Addr1	Addr0	0	0	DATA_DIR
NMT (broadcast)	0	0	0	0	0	0	0	0	1	0	0

Addr5 to Addr0 coding the Front-Address by backplane signals. Please see Appendix E to refer corresponding hardware manuals for more details.

c) Remote transmission bit

d) Identifier extension bit

11-bit identifiers (EDCP identifiers)	0 (dominant)
29 bit identifiers ((CC24 routing messages)	1 (recessive)

e) Reserved

f) 4 bit Data length code (maximum length is 8)

g) Data field

Single channel access: n = 3 to 7 bytes

DATA ID (n1, n2)	CHANNEL (n3)				
DATA ID (n1, n2)	CHANNEL (n3)	DATA (n4)	DATA (n5)	DATA (n6)	DATA (7)

Multiple channel access: n = 5 to 7 bytes

DATA ID (n1, n2)	Member (n3, n4)		offset (n5)		
DATA ID (n1, n2)	CHANNEL (n3)	DATA (n4)	DATA (n5)	DATA (n6)	DATA (7)

Recommended is member value 0 to requests the DATA_ID for all channels of the module. Also a request for the first 16 channels can be combined in each case via the member bits (channel 0 by 0x0001, channel1 by 0x0002 and all 16 channels by 0xffff).

offset byte is reserved

Group accesses

DATA ID (n1, n2)	Group number (n3)	Offset (n4)		
DATA ID (n1, n2)	Group number (n3)	Offset (n4)	Members (n5, n6)	Configuration (n6, n7)

Module access: n = 2 to 6 bytes

DATA ID (n1, n2)				
DATA ID (n1, n2)	DATA (n3)	DATA (n4)	DATA (n5)	DATA (n6)

h) 16 bit CRC field = CRC + CRC DelimiterCyclic

Please refer "CAN data link layers in some detail" (Appendix E – Literature references).

Description of Data fields point g)

DATA ID

Bit15	Bit14	Bit13	Bit12	Bit11	Bit10	Bit9	Bit8	Bit7	Bit6	Bit5	Bit4	Bit3	Bit2	Bit1	Bit0
-------	-------	-------	-------	-------	-------	------	------	------	------	------	------	------	------	------	------

The Front-end device must do:

- Processing of NMT services via broadcast messages inside of the CAN segment
- Processing of the single accesses with direct channel values.
- Processing of group information of the module.
- Self-registration in the higher level through sending the module address.
- Building of status information.
- Send an active error message with higher priority if one of the bits - sum status, supply voltages or safety loop - in the group access "General status module" not has been set (the module must be configured as a CAN-node with an Active-CAN message function).

3.4.3 Summary of CAN data frame accesses via the NMT service identifier

Access	DATA_DIR	BYTE	NMT DATA_ID Bit								read / write / active	DATA-Bytes
	ID0	hex	7	6	5	4	3	2	1	0		
No NMT DATA_ID	x		0	x	x	x	x	x	x	x		
NMT service CAN segment	0		1	1	N3	N2	N1	N0	R1	R0		
NMT Address (MICC only)	0/1	0x30	0	0	1	1	0	0	0	0	w	0/2/3
NMT Start	0		1	1	0	0	0	1	x	x	w	1
NMT Stop	0		1	1	0	0	1	0	x	x	w	1
NMT Reset CAN	0		1	1	0	0	1	1	x	x	w	1
NMT Reset hardware	0		1	1	0	1	0	0	x	x	w	1
NMT set of Bit rate	0		1	1	0	1	0	1	x	x	w	3
NMT set of temperature	0		1	1	0	1	1	0	x	x	w	3
NMT mode set	0		1	1	1	0	0	0	x	x	w	2/6
NMT set standard DCP or enhanced DCP	0		1	1	1	0	0	1	x	x	w	2
NMT channel group set	0		1	1	1	0	1	0	x	x	w	8/6
NMT module set	0		1	1	1	0	1	1	x	x	w	8/6
Notes: N3 ... N0: NMT access R1 ... R0: reserved												

NMT Address (MICC only)

Access	CAN ID (NMT)	RTR	EXT_INSTR	DATA_DIR	DATA_ID	DATA_1	DATA_0
NMT-RTR master	0x004	1	0	0	-	-	-
NMT-RTR board reply	0x003	0	0	0	0xC0	address	-
NMT Address master write	0x004	0	0	0	0xC0	old address	new address

NMT Start	The state of all Front-end devices is going to OPERATIONAL (see 4.2Appendix B – Diagram of operating modes)
NMT Stop	The state of all Front-end devices is going to PREPARED This is necessary before storing any information permanently in EEPROM or execute one of the following NMT services.
NMT Reset CAN	re - initialise all connected iseg Multi-Channel CAN devices.
NMT Reset hardware	execute a hardware reset of all connected CAN devices.
NMT set of Bit rate	set a new bit rate for all connected iseg Multi-Channel CAN devices (DATA_1 / DATA_0 see group access Bit rate , chapter 3.5.2.25Bit rate (module write- / read-write access)
NMT set of temperature	An offset for the calculation of the temperature will be calculated in all modules which receive this message. DATA_1 to DATA_0 contains the measured temperature in tenth parts of °C as UI2 type.

DATA_1	DATA_0
MSB	LSB

NMT mode set

Mode	Data_0	Description
NORMAL_MODE	000	Operating Mode "Operational" without any condition
FACTORY MODES	001 - 005	will used in production of the modules only!
LIVE_INSERTION_MODE	006	Mode to avoid events during a live insertion

NMT set standard DCP or enhanced DCP:

DATA_0=0 standard DCP	DCP
DATA_0=1 enhanced DCP	EDCP

NMT broadcast messages

NMT channel group set frame:

Access	DATA_DIR	NMT DATA_ID	GROUP	EDCP DATA_ID EDCP Multiple Single Channels Access	DATAN	DATAN-1	DATAN-2	DATAN-3
NMT group voltage set	0	0xe8	Group	0x6100	Voltage [R4]			
NMT group current set	0	0xe8	Group	0x6101	Current [R4]			
NMT group control set	0	0xe8	Group	0x6001	Control [UI2]			
NMT group event mask set	0	0xe8	Group	0x6003	Event mask [UI2]			

Group 0..255 (group = 0 after power on of the module)

NMT module set frame:

Access	DATA_DIR	NMT DATA_ID	GROUP	EDCP DATA_ID EDCP Module Access	DATAN
NMT voltage ramp speed set	0	0xec	reserved	0x1100	Voltage ramp speed [R4]
NMT current ramp speed set	0	0xec	reserved	0x1101	Current ramp speed [R4]
NMT control set	0	0xec	reserved	0x1001	Control [UI2]
NMT event mask	0	0xec	reserved	0x1003	Event mask [UI2]
NMT event channel mask	0	0xec	reserved	0x1005	Event mask [UI2]

With one of the NMT channel group set or the NMT module set frames a message is sent to the corresponding data point of the table above in kind of a broadcast information for all channels, which have the same group number GROUP. The detailed description of the frames can be found by a click on the arrows of the tables. The EDCP Single Channel Access [GroupNumber](#) (described on 3.5.1.40 Group number (single/ multiple single read-write access)) handles the distribution of a group number for each channel.

Example: Switch ON all channels of the whole system (group number after reset of all channels is zero)

ID	DLC	NMT DATA_ID	GROUP	EDCP DATA_ID Multiple Single Channel Access	Channel control
0x004	0x6	0xe6	0x00	0x6001	0x0008

3.4.4 Summary of CAN data frame accesses via the Front-end-address identifier

Multi-channel High Voltage CAN modules are made out of one or two PCBs (in order to double the number of HV channels) and one digital CAN Interface per PCB.

Each module board has to be controlled separately via its own CAN nodes identifier (see 3.4.2 CAN Data Frame to control the HV modules above).

3.4.4.1 List to access of the EDCP made for HV boards up to 255 channels EDCP Single Channel Accesses

Access	DATA_DIR	WORD	DATA_ID Bit										read / write / active	DATA Bytes	Page
	ID0	hex	15	14	13	12	11	1	0				
DATA_ID			0	S	G	M	x ⁽²⁾	x ⁽²⁾	x ⁽²⁾	x ⁽²⁾	x ⁽²⁾				
Single channel access	1/0	0x4xxx	0	1	0	0	S11 ... S0⁽¹⁾								
ChannelStatus	1	0x4000	0	1	0	0	0x000					r	3/5	47	
ChannelStatus32	1	0x4080	0	1	0	0	0x080					r	3/7	47	
ChannelControl	1/0	0x4001	0	1	0	0	0x001					r/w	3/5	50	
ChannelControl32	1/0	0x4081	0	1	0	0	0x081					r/w	3/7	50	
ChannelEventStatus	1/0	0x4002	0	1	0	0	0x002					r/w	3/5	51	
ChannelEventStatus32	1/0	0x4082	0	1	0	0	0x082					r/w	3/7	52	
ChannelEventMask	1/0	0x4003	0	1	0	0	0x003					r/w	3/5	54	
ChannelEventMask	1/0	0x4083	0	1	0	0	0x083					r/w	3/7	54	
DelayedTripTime	1/0	0x4005	0	1	0	0	0x005					r/w	3/5	56	
DelayedTripAction	1/0	0x4006	0	1	0	0	0x006					r/w	3/4	56	
ExternalInhibitAction	1/0	0x4007	0	1	0	0	0x007					r/w	3/4	57	
VoltageRampPriority	1/0	0x4010	0	1	0	0	0x010					r/w	3/5	57	
VoltageSet	1/0	0x4100	0	1	0	0	0x100					r/w	3/7	58	
CurrentSet / CurrentTrip	1/0	0x4101	0	1	0	0	0x101					r/w	3/7	58	
VoltageMeasure	1	0x4102	0	1	0	0	0x102					r	3/7	59	
CurrentMeasure	1	0x4103	0	1	0	0	0x103					r	3/7	59	
VoltageBounds	1/0	0x4104	0	1	0	0	0x104					r/w	3/7	60	
CurrentBounds	1/0	0x4105	0	1	0	0	0x105					r/w	3/7	60	
VoltageNominal	1	0x4106	0	1	0	0	0x106					r	3/7	61	
CurrentNominal	1	0x4107	0	1	0	0	0x107					r	3/7	61	
CurrentMeasure Range	1	0x4109	0	1	0	0	0x109					r	3/8	61	
VoltageBottom	1/0	0x410A	0	1	0	0	0x10A					r/w	3/7	62	
VctCoefficient	1/0	0x4120	0	1	0	0	0x120					r/w	3/7	62	
TemperatureExternal	1	0x4121	0	1	0	0	0x121					r/w	3/7	62	
ResistorExternal	1/0	0x4122	0	1	0	0	0x122					r/w	3/7	63	
VoltageRampSpeedUp	1/0	0x4123	0	1	0	0	0x123					r/w	3/7	63	
VoltageRampSpeedDown	1/0	0x4124	0	1	0	0	0x124					r/w	3/7	63	

Access	DATA_DIR	WORD	DATA_ID Bit					read / write / active	DATA Bytes	Page
CurrentRampSpeedUp	1/0	0x4125	0	1	0	0	0x125	r/w	3/7	64
CurrentRampSpeedDown	1/0	0x4126	0	1	0	0	0x126	r/w	3/7	64
VoltageRampSpeedMin	1/0	0x4127	0	1	0	0	0x127	r/w	3/7	64
VoltageRampSpeedMax	1/0	0x4128	0	1	0	0	0x128	r/w	3/7	65
CurrentRampSpeedMin	1/0	0x4129	0	1	0	0	0x129	r/w	3/7	65
CurrentRampSpeedMax	1/0	0x4130	0	1	0	0	0x130	r/w	3/7	65
OutputMode	1/0	0x4140	0	1	0	0	0x140	r/w	3/4	66
OutputPolarity	1/0	0x4141	0	1	0	0	0x141	r/w	3/4	66
VoltageMode	1	0x4142	0	1	0	0	0x142	r	3/7	66
CurrentMode	1	0x4143	0	1	0	0	0x143	r	3/7	67
<u>VoltageModeList</u>	1	0x4150	0	1	0	0	0x150	r	3/7	67
CurrentModeList	1	0x4160	0	1	0	0	0x160	r	3/7	67
<u>GroupNumber</u>	1/0	0x4200	0	1	0	0	0x200	r/w	3/4	68
Notes: S DATA_ID type bit for a EDCP-frame of an access to a single channel G DATA_ID type bit for a EDCP-frame of an access to a group of channels M DATA_ID type bit for a EDCP-frame of an access to the whole module ¹⁾ Sn single channel access bits, (n=0 ... 11) ²⁾ x 0 or 1										

3.4.4.2 EDCP Multiple Single Channels Access

Access	DATA_DIR	WORD	DATA_ID Bit										read / write / active	DATA Bytes	Page
	ID0	hex	15	14	13	12	1	0				
DATA_ID			0	S	G	M	x ⁽²⁾	x ⁽²⁾	x ⁽²⁾	x ⁽²⁾	x ⁽²⁾				
Single channel access	1	0x6xxx	0	1	1	0	S11 ... S0⁽¹⁾								
ChannelStatus	1	0x6000	0	1	1	0	0x000					r	5/5	47	
ChannelStatus32	1	0x6080	0	1	1	0	0x080					r	5/7	47	
ChannelControl	1	0x6001	0	1	0	0	0x001					r	5/5	50	
ChannelControl32	1	0x6081	0	1	0	0	0x081					r	5/7	50	
ChannelEventStatus	1	0x6002	0	1	1	0	0x002					r	5/5	51	
ChannelEventStatus32	1	0x6082	0	1	1	0	0x082					r	5/7	52	
ChannelEventMask	1	0x6003	0	1	1	0	0x003					r	5/5	54	
ChannelEventMask32	1	0x6083	0	1	1	0	0x083					r	5/7	54	
DelayedTripTime	1	0x6005	0	1	1	0	0x005					r	3/5	56	
DelayedTripAction	1	0x6006	0	1	1	0	0x006					r	3/4	56	
ExternalInhibitAction	1	0x6007	0	1	1	0	0x007					r	3/4	57	
VoltageRampPriority	1	0x6010	0	1	1	0	0x010					r	3/5	57	
VoltageSet	1	0x6100	0	1	1	0	0x100					r	5/7	58	
CurrentSet / CurrentTrip	1	0x6101	0	1	1	0	0x101					r	5/7	58	
VoltageMeasure	1	0x6102	0	1	1	0	0x102					r	5/7	59	
CurrentMeasure	1	0x6103	0	1	1	0	0x103					r	5/7	59	
VoltageBounds	1	0x6104	0	1	1	0	0x104					r	5/7	60	
CurrentBounds	1	0x6105	0	1	1	0	0x105					r	5/7	60	
VoltageNominal	1	0x6106	0	1	1	0	0x106					r	5/7	61	
CurrentNominal	1	0x6107	0	1	1	0	0x107					r	5/7	61	
CurrentMeasure Range	1	0x6109	0	1	1	0	0x109					r	3/8	61	
VoltageBottom	1	0x610A	0	1	1	0	0x10A							62	
VctCoefficient	1	0x6120	0	1	1	0	0x120					r	3/7	62	
TemperatureExternal	1	0x6121	0	1	1	0	0x121					r	3/7	62	
ResistorExternal	1	0x6122	0	1	1	0	0x122					r	3/7	63	
VoltageRampSpeedUp	1	0x6123	0	1	0	0	0x123					r/w	3/7	63	
VoltageRampSpeedDown	1	0x6124	0	1	0	0	0x124					r/w	3/7	63	
CurrentRampSpeedUp	1	0x6125	0	1	0	0	0x125					r/w	3/7	64	
CurrentRampSpeedDown	1	0x6126	0	1	0	0	0x126					r/w	3/7	64	
VoltageRampSpeedMin	1	0x6127	0	1	0	0	0x127					r/w	3/7	64	
VoltageRampSpeedMax	1	0x6128	0	1	0	0	0x128					r/w	3/7	65	
CurrentRampSpeedMin	1	0x6129	0	1	0	0	0x129					r/w	3/7	65	
CurrentRampSpeedMax	1	0x6130	0	1	0	0	0x130					r/w	3/7	65	
OutputMode	1	0x6140	0	1	1	0	0x140					r	3/4	66	

Access	DATA_DIR	WORD	DATA_ID Bit					read / write / active	DATA Bytes	Page
OutputPolarity	1	0x6141	0	1	1	0	0X141	r	3/4	66
VoltageMode	1	0x6142	0	1	1	0	0X142	r	3/7	66
CurrentMode	1	0x6143	0	1	1	0	0X143	r	3/7	67
VoltageModeList	1	0x6150	0	1	1	0	0X150	r	3/7	67
CurrentModeList	1	0x6160	0	1	1	0	0X150	r	3/7	67
<u>ChannelGroup</u>	1	0x6200	0	1	1	0	0X200	r	6	68
Notes: S DATA_ID type bit for a EDCP-frame of an access to single channel G DATA_ID type bit for a EDCP-frame of an access to a group of channels M DATA_ID type bit for a EDCP-frame of an access to the whole module 1) Sn single channel access bits, (n=0 ... 11) 2) x 0 or 1										

3.4.4.3 Module Access

Access	DATA_ DIR	WORD	DATA_ID Bit								read / write / active	DATA- Bytes	Page
	ID0	hex	15	14	13	12	1	0		
DATA_ID			0	S	G	M	x ⁽²⁾	x ⁽²⁾	x ⁽²⁾	x ⁽²⁾	x ⁽²⁾		
Module access	1/0	0x1xxx	0	0	0	1	M11 ... M0⁽¹⁾						
ModuleStatus	1	01000	0	0	0	1	0x000				r	2/4	69
ModuleStatus32	1	01080	0	0	0	1	0x080				r	2/6	69
ModuleControl		0x1001	0	0	0	1	0x001				r/w	2/4	72
ModuleControl32		0x1081	0	0	0	1	0x081				r/w	2/6	72
ModuleEventStatus	1/0	0x1002	0	0	0	1	0x002				r/w	2/4	74
ModuleEventStatus32	1/0	0x1082	0	0	0	1	0x082				r/w	2/6	74
ModuleEventMask	1/0	0x1003	0	0	0	1	0x003				r/w	2/4	75
ModuleEventMask32	1/0	0x1083	0	0	0	1	0x083				r/w	2/6	75
ModuleEventChannelStatus	1/0	0x1004	0	0	0	1	0x004				r/w	2/4	77
ModuleEventChannelStatus32	1/0	0x1084	0	0	0	1	0x084				r/w	2/6	77
ModuleEventChannelMask	1/0	0x1005	0	0	0	1	0x005				r/w	2/4	78
ModuleEventChannelMask32	1/0	0x1085	0	0	0	1	0x085				r/w	2/6	78
ModuleEventGroupStatus	1/0	0x1006	0	0	0	1	0x006				r/w	2/4	79
ModuleEventGroupMask	1/0	0x1007	0	0	0	1	0x007				r/w	4/2	80
VoltageRampSpeed	1/0	0x1100	0	0	0	1	0x100				r/w	2/6	81
CurrentRampSpeed	1/0	0x1101	0	0	0	1	0x101				r/w	2/6	81
VoltageMax	1	0x1102	0	0	0	1	0x102				r	2/6	82
CurrentMax	1	0x1103	0	0	0	1	0x103				r	2/6	83
Supply24	1	0x1104	0	0	0	1	0x104				r	2/6	83
Supply5	1	0x1105	0	0	0	1	0x105				r	2/6	84
BoardTemperature	1	0x1106	0	0	0	1	0x106				r	2/6	84
ThresholdArmErrorDetection	1/0	0x1107	0	0	0	1	0x107				r/w	2/6	84
SerialNumber	1	0x1200	0	0	0	1	0x200				r	2/6	84
FirmwareRelease	1	0x1201	0	0	0	1	0x201				r	2/6	85
BitRate	0/1	0x1202	0	0	0	1	0x202				r	4/2	85
NameOfFirmware	1	0x1203	0	0	0	1	0x203				r	5/6	86
ADC SamplesPerSecond	1/0	0x1204	0	0	0	1	0x204				r/w	4/2	87
DigitalFilter	1/0	0x1205	0	0	0	1	0x205				r/w	4/2	87

Access	DATA_ DIR	WORD	DATA_ID Bit					read / write / active	DATA-Bytes	Page
ChannelNumber	1	0x1208	0	0	0	1	0x208	r	6	87
ArticleDescription	1	0x1209	0	0	0	1	0x209	r	8	87
ModuleOption	1	0x1280	0	0	0	1	0x280	r	6	88
ModuleOptionSpec	1	0x1290	0	0	0	1	0x290	r	7	89
ModuleCommMode	0	0x12A0	0	0	0	1	0x2A0	w	4	90
FactorySettings	1/0	0x1401	0	0	0	1	0x401	r/w	4/8	-
Notes: S DATA_ID type bit for a EDCP-frame of an access to single channel G DATA_ID type bit for a EDCP-frame of an access to a group of channels M DATA_ID type bit for a EDCP-frame of an access to the whole module ¹⁾ Mn module access bits, (n=0 ... 11) ²⁾ x 0 or 1										

3.4.4.4 EDCP Group Accesses

Access	DATA_ DIR	WORD	DATA_ID Bit										read / write / active	DATA - Bytes	Page
	ID0	hex	15	14	13	12	1	0				
DATA_ID			0	S	G	M	x ⁽²⁾	x ⁽²⁾	x ⁽²⁾	x ⁽²⁾	x ⁽²⁾				
Groups	1/0	0x2000	0	0	1	0						r/w	8/4	90	
SetGroup														91	
StatusGroup														93	
MonitorGroup														95	
TripGroup	97														
Temperatures	1	0x2001	0	0	1	0	0x001					r	7	99	
SupplyMeasurements	1	0x2002	0	0	1	0	0x002					r	7	99	
SupplyNominals	1	0x2003	0	0	1	0	0x003							99	
GroupVoltageLimits	1	0x2005	0	0	1	0	0x005					r	7	99	
GroupCurrentLimits	1	0x2006	0	0	1	0	0x006					r	7	99	
VoltageSetAllChannels	0	0x2100	0	0	1	0	0x100					w	6	100	
Current-Trip/Set-AllChannels	0	0x2101	0	0	1	0	0x101					w	6	100	
SetOnOffAllChannels	0	0x2200	0	0	1	0	0x200					w	6	100	
SetEmergencyAllChannels	0	0x2201	0	0	1	0	0x201					w	6	102	
EventStatusVoltageLimitAllChannels	1/0	0x2202	0	0	1	0	0x202					r/w	6	103	
EventStatusCurrentLimitAllChannels	1/0	0x2203	0	0	1	0	0x203					r/w	6	104	
EventStatusCurrentTrip-AllChannels	1/0	0x2204	0	0	1	0	0x204					r/w	6	105	
EventStatusExternalInhibitAllChannels	1/0	0x2205	0	0	1	0	0x205					r/w	6	103	
SetOnOffChannelsExtender	1/0	0x2280	0	0	1	0	0x280					r/w	6	107	
SetEmergencyChannels-Extender	1/0	0x2290	0	0	1	0	0x290					r/w	6	108	
Notes:															
S	DATA_ID type bit for a EDCP-frame of an access to a single channel														
G	DATA_ID type bit for a EDCP-frame of an access to a group of channels														
M	DATA_ID type bit for a EDCP-frame of an access to the whole module														
¹⁾	Gn group access bits, (n=0 ... 11)														

3.4.4.5 Important DCP Module Access

Access	EXT_ INSTR	DATA_ DIR	Byte	DATA_ID Bit								read / write / active	DATA- Bytes	Page
	ID0	ID1		7	6	5	4	3	2	1	0			
Group access MODULE:	0	1/0		1	1	M3	M2	M1	M0	R1	R0			
GeneralStatus	0	1/0	0xc0	1	1	0	0	0	0	0	0	a	3	109
LogOnOff Front-end at the superior layer	0	1/0	0xD8	1	1	0	1	1	0	0	0	a/w	3	111
Notes:														

3.5 Description of data information per DATA_ID in EDCP

3.5.1 EDCP Single Access

The single access describes the control of the channel properties. The range of the single access contains the accesses to the analog digital data items, to the status and the control words of the channels.

3.5.1.1 Channel status (single/multiple single read-write access)

EDCP frame:

Access	DATA_DIR	DATA_ID	CANNEL	DATA_1	DATA_0
master single read-	1	0x4000	Mx		
master single MBR read-	1	0x6000	Member		Offset
HV board write access	0	0x4000/0x6000	Mx	ChannelStatus	
Notes:					
Mx	Channel	0 ... 255			
Member	Members	1 ... 16			
Offset	Channel member offset	0, 16, 32 ... too access up to 255 channels			
ChannelStatus	DATA_0 to DATA_1	UI2			

3.5.1.2 Channel status32 (single/multiple single read-write access)

Access	DATA_DIR	DATA_ID	CHANNEL	DATA_3	DATA_2	DATA_1	DATA_0
master single read-	1	0x4080	Mx				
master single MBR read-	1	0x6080	Member		Offset		
HV board write access	0	0x4080/0x6080	Mx	ChannelStatus32			
Notes:							
Mx	Channel	0 ... 255					
Member	Members	1 ... 16					
Offset	Channel member offset	0, 16, 32 ... too access up to 255 channels					
ChannelStatus32	DATA_0 to DATA_3	UI4					

Bit31	Bit30	Bit29	Bit28	Bit27	Bit26	Bit25	Bit24
Reserved	Reserved	Reserved	Reserved	Reserved	Reserved	Reserved	Reserved
Bit23	Bit22	Bit21	Bit20	Bit19	Bit18	Bit17	Bit16
isConstant Power	isVoltage BoundLower	isVoltage BoundUpper	isVoltage RampDown	isVoltage RampUp	isCurrent RampDown	isCurrent RampUp	isCurrent Ramping
Bit15	Bit14	Bit13	Bit12	Bit11	Bit10	Bit09	Bit08
isVoltageLimit Exceeded	IsCurrentLimit Exceeded	isTrip Exceeded	isExternal Inhibit	isVoltage Bounds Exceeded	isCurrent BoundsExceeded	isArcError	isLowCurrentR ange
Bit07	Bit06	Bit05	Bit04	Bit03	Bit02	Bit01	Bit00
isConstant Voltage	isConstant Current	isEmergency	isRamp	isOn	inputError	isArc	Reserved

The ChannelStatus register describes the actual status. Depending on the status of the module the bits will be set or reset.

The bit InputError will be set if the given parameter is not plausible or it exceeds the module parameters (e.g. if the command Vset=4000V is given to a module with NominalVoltage=3000V). The bit InputError is not be set if the given values are temporarily not possible (e.g. Vset=2800 at a module with NominalVoltage=3000V, but HardwareLimitVoltage=2500V). A certain signature which kind of input error it is does not exists.

Bit	Description
isVoltageLimitExceeded	voltage limit set by Vmax is exceeded isVoltageLimitExceeded=0 channel is ok isVoltageLimitExceeded=1 the hardware voltage limit is exceeded
isCurrentLimitExceeded	current limit set by Imax is exceeded isCurrentLimitExceeded=0 channel is ok isCurrentLimitExceeded=1 the hardware current limit is exceeded (to detect a hardware voltage or current limit error flag the firmware has to evaluate the channel voltage and current at first)
isTripExceeded	Trip is set when Voltage or Current limit or Iset has been exceeded (when KillEnable=1) isTripExceeded=0 channel is ok isTripExceeded=1 voltage output is shut off to 0V without ramp because the channel has been tripped.
isExternalInhibit	External Inhibit isExternalInhibit=0 channel is ok isExternalInhibit=1 External Inhibit was scanned
isVoltageBoundsExceeded	Voltage out of bounds isVoltageBoundsExceeded=0 channel is ok isVoltageBoundsExceeded=1 $ V_{meas} - V_{set} > V_{bounds}$
isCurrentBoundsExceeded	Current out of bounds isCurrentBoundsExceeded=0 channel is ok isCurrentBoundsExceeded=1 $ I_{meas} - I_{set} > I_{bounds}$ (to detect a voltage or current out of bound flag the firmware has to ramp the channel voltage Vset at first)

Bit	Description
isArcError	<p>maximum number of allowed arcs is exceeded, high voltage has been turned off</p> <p>isArcError=0 no arc error isArcError=1 maximum number of allowed arcs is exceeded</p>
isLowCurrentRange	<p>Low or small current range of the current measurement</p> <p>isLowCurrentRange=0 high or standard current range isLowCurrentRange=1 low current range of the current measurement</p>
isConstantVoltage	<p>Voltage control active (evaluation is guaranteed when no ramp is running)</p> <p>isConstantVoltage=1 channel is in state of voltage control isConstantVoltage=1 channel is in state of current control</p>
isContstantCurrent	<p>Current control active (evaluation is guaranteed when no ramp is running)</p>
IsEmergencyOff	<p>Emergency off without ramp</p> <p>IsEmergencyOff=1 channel is in state of emergency off, VO has been shut off to 0V without ramp</p>
isOn	<p>On</p> <p>isOn=0 channel is off isOn=1 channel voltage follows the Vset value</p>
isRamping	<p>Ramp is running</p> <p>isRamping=0 no voltage is in change isRamping=1 voltage is in change with the stored ramp speed value</p>
inputError	<p>Input error</p> <p>inputError=0 no input-error inputError=1 incorrect message to control the channel</p>
isArc or IsRegulationError	<p>at least one electrical arc is active or faster error detection of the channel hardware is not in regulation (updated by firmware every 5ms)</p> <p>isArc=0 no arc active / normal error evaluation isArc=1 at least one electrical arc is active / fast detection of a regulation error (OPTION)</p>
res	reserved

3.5.1.3 Channel control: (single write- and single/ multiple single read-write access)

EDCP frame:

Access	DATA_DIR	DATA_ID	CHN	DATA_1	DATA_0
master write access	0	0x4001	Mx		
master read-	1	0x4001	Mx	ChannelControl	
master single MBR read-	1	0x6001	Member		Offset
HV board write access	0	0x4001/0x6001	Mx	ChannelControl	
Notes:					
Mx	Channel	0 ... 255			
Member	Members	1 ... 16			
Offset	Channel member offset	0, 16, 32 ... to access up to 255 channels			

3.5.1.4 Channel control32: (single write- and single/ multiple single read-write access)

Access	DATA_DIR	DATA_ID	CHANNEL	DATA_3	DATA_2	DATA_1	DATA_0
master single read-	1	0x4081	Mx				
master single MBR read-	1	0x6081	Member		Offset		
HV board write access	0	0x4081/0x6081	Mx	ChannelControl32			
Notes:							
Mx	Channel	0 ... 255					
Member	Members	1 ... 16					
Offset	Channel member offset	0, 16, 32 ... too access up to 255 channels					
ChannelControl32	DATA_0 to DATA_3	UI4					

ChannelControl DATA_0 to DATA_3 UI4

Bit31	Bit30	Bit29	Bit28	Bit27	Bit26	Bit25	Bit24
Reserved	Reserved	Reserved	Reserved	Reserved	Reserved	Reserved	Reserved
Bit23	Bit22	Bit21	Bit20	Bit19	Bit18	Bit17	Bit16
Reserved	Reserved	Reserved	Reserved	Reserved	Reserved	Reserved	Reserved
Bit15	Bit14	Bit13	Bit12	Bit11	Bit10	Bit09	Bit08
Reserved	Reserved	Reserved	Reserved	Reserved	Reserved	Reserved	Reserved
Bit07	Bit06	Bit05	Bit04	Bit03	Bit02	Bit01	Bit00
Reserved	Reserved	setEMCY	Reserved	setON	Reserved	Reserved	Reserved

The signals SetOn and SetEmergencyOff control are basic functions of the channel. The signal SetOn is switching ON the HV of the channel and is a precondition for giving voltage to the output. As far as a VoltageSet has been set and no event has occurred and is not registered yet (in minimum, bit 5 and bit 10 to 15 of the register Channel Event Status must be 0), a start of a HV ramp will be synchronized (a ramp is a software controlled, time proportionally increase / decrease of the output voltage).

A SetEmergencyOff switch the channel in state isEmergencyOff and a new SetOn is only possible after SetEmergencyOff is reset to zero.

Bit	Name	Description
setEMCY	SetEmergencyOff	Set "Emergency Off" SetEMCY=0 channel emergency cut-off works setEMCY=1 cut-off VO shut off to 0V without ramp
setON	SetOn	Set On setOn=0 switch the channel to OFF setOn=1 switch the channel to ON
res	Reserved	Reserved

3.5.1.5 Channel event status (single write- and single/ multiple single read-write access)

EDCP frame:

Access	DATA_DIR	DATA_ID	CHN	DATA_1	DATA_0
master write access	0	0x4002	Mx		
master read-	1	0x4002	Mx	ChannelEventStatus	
master single MBR read-	1	0x6002	Member		
HV board write access	0	0x4002/0x6002	Mx	ChannelEventStatus	
Notes:					
Mx	Channel	0 ... 255			
Member	Members	1 ... 16			
Offset	Channel member offset	0, 16, 32 ... to access up to 255 channels			

3.5.1.6 Channel event status32 (single write- and single/ multiple single read-write access)

Access	DATA_DIR	DATA_ID	CHANNEL	DATA_3	DATA_2	DATA_1	DATA_0
master single read-	1	0x4082	Mx				
master single MBR read-	1	0x6082	Member		Offset		
HV board write access	0	0x4082/0x6082	Mx	ChannelEventStatus32			
Notes:							
Mx		Channel	0 ... 255				
Member		Members	1 ... 16				
Offset		Channel member offset	0, 16, 32 ... too access up to 255 channels				
ChannelEventStatus32		DATA_0 to DATA_3	UI4				

ChannelEventStatus DATA_0 to DATA_3 UI4

Bit31	Bit30	Bit29	Bit28	Bit27	Bit26	Bit25	Bit24
Reserved	Reserved	Reserved	Reserved	Reserved	Reserved	Reserved	EventMax Power
Bit23	Bit22	Bit21	Bit20	Bit19	Bit18	Bit17	Bit16
EventCon-stantPower	EventVoltage BoundLower	EventVoltageBoundUpper	EventVoltage RampDown	EventVoltage RampUp	EventCurrent RampDown	EventCurrent RampUp	EventEndOf CurrentRamp
Bit15	Bit14	Bit13	Bit12	Bit11	Bit10	Bit09	Bit08
EventVoltage Limit Exceeded	EventCurrent Limit Exceeded	EventTrip	Event External Inhibit	EventVoltageBounds Exceeded	EventCurrent Bounds Exceeded	EventArc Error	Reserved
Bit07	Bit06	Bit05	Bit04	Bit03	Bit02	Bit01	Bit00
EventCon-stantVoltage	EventCon-stantCurrent	Event Emergency	EventEndOfVoltageRamp	EventOn2Off	EventInput Error	EventArc	Reserved

Bit	Blocking	Description
EventMaxPower		
EventConstantPower		Constant Power has been or is active
EventVoltageBoundLower		The measured voltage has been or is lower than the programmed lower bound
EventVoltageBoundUpper		The measured voltage has been or is higher than the programmed upper bound
EventVoltageRampDown		Voltage ramp down to a lower absolute value has been started
EventVoltageRampUp		Voltage ramp up to a higher absolute value has been started
EventCurrentRampDown		Current ramp down has been started
EventCurrentRampUp		Current ramp up has been started
EventEndOfCurrentRamp		A running current ramp has reached its destination
EventVoltageLimitExceeded	Yes	Voltage limit Vlim has been or is exceeded
EventCurrentLimitExceeded	Yes	Current limit Ilim has been or is exceeded
EventTrip	Yes	Event: Trip is set when Voltage or Current limit or Iset has been exceeded (when KillEnable=1 or Delayed Trip is configured)
EventExternalInhibit	Yes	External Inhibit has been or is active
EventVoltageBounds		Measured voltage has been or is out of bounds
EventCurrentBounds		Measured current has been or is out of bounds
EventArcError		An Arc Error event has occurred
EventConstantVoltage		Constant Voltage has been or is active
EventConstantCurrent		Constant Current has been or is active
EventEmergencyOff	Yes	Channel was shut down with emergency off
EventEndOfRamp		A running voltage ramp has reached its destinationThe channel was switched off due to a blocking event (Voltage/Current Limit, Current Trip, External Inhibit or Emergency Off)
EventOnToOff		The channel was switched off due to a blocking event (Voltage/Current Limit, Current Trip, External Inhibit or Emergency Off)
EventInputError		An Input Error has occurred
EventArc		Arc or Regulation Error has been or is active

An event bit is permanently set if the status bit is 1 or is changing to 1. Different to the status bit an event bit isn't automatically reset. A reset has to be done by the user by writing an 1 to this event bit.

3.5.1.7 Channel event mask (single write- and single/ multiple single read-write access)

EDCP frame:

Access	DATA_DIR	DATA_ID	CHANNEL	DATA_1	DATA_0
master write access	0	0x4003	Mx		
master read-	1	0x4003	Mx	ChannelEventMask	
master single MBR read-	1	0x6003	MemberOffset		
HV board write access	0	0x4003/0x6003	Mx	ChannelEventMask	
Notes:					
Mx	Channel	0 ... 255			
Member	Members	1 ... 16			
Offset	Channel member offset	0, 16, 32 ... to access up to 255 channels			
ChannelEventMask	DATA_0 to DATA_1	UI2			

3.5.1.8 Channel event mask32 (single write- and single/ multiple single read-write access)

Access	DATA_DIR	DATA_ID	CHANNEL	DATA_3	DATA_2	DATA_1	DATA_0
master single read-	1	0x4083	Mx				
master single MBR read-	1	0x6083	Member		Offset		
HV board write access	0	0x4083/0x6083	Mx	ChannelEventStatus32			
Notes:							
Mx	Channel		0 ... 255				
Member	Members		1 ... 16				
Offset	Channel member offset		0, 16, 32 ... too access up to 255 channels				
ChannelEventMask32	DATA_0 to DATA_3		UI4				

ChannelEventMaskDATA_0 to DATA_3

UI4

Bit31	Bit30	Bit29	Bit28	Bit27	Bit26	Bit25	Bit24
Reserved	Reserved	Reserved	Reserved	Reserved	Reserved	Reserved	Reserved
Bit23	Bit22	Bit21	Bit20	Bit19	Bit18	Bit17	Bit16
Reserved	MaskEvent Voltage BoundLower	MaskEvent Voltage BoundUpper	MaskEvent Voltage RampDown	MaskEvent Voltage RampUp	MaskEvent Current RampDown	MaskEvent Current RampUp	MaskEvent EndOf CurrentRamp
Bit15	Bit14	Bit13	Bit12	Bit11	Bit10	Bit09	Bit08
MaskEvent VoltageLimit	MaskEvent CurrentLimit	MaskEvent Trip	MaskEvent External Inhibit	MaskEvent Voltage Bounds	MaskEvent Current Bounds	MaskEvent ArcError	Reserved
Bit07	Bit06	Bit05	Bit04	Bit03	Bit02	Bit01	Bit00
MaskEvent Constant Voltage	MaskEvent Constant Current	Reserved	MaskEvent EndOf VoltageRamp	MaskEvent On To Off	MaskEvent Input Error	MaskEvent ARC	Reserved

The function of the ChannelEventMask register is described in 3.5.5.1 Channel events

Bit	Description
MaskEventMaxPower	Mask the Event Max Power
MaskEventConstantPower	Mask the Event Constant Power
MaskEventVoltageBoundLower	Mask the Event Voltage Bound Exceeded Lower
MaskEventVoltageBoundUpper	Mask the Event Voltage Bound Exceeded Upper
MaskEventVoltageRampDown	Mask the Event Voltage Ramp Down
MaskEventVoltageRampUp	Mask the Event Voltage Ramp Up
MaskEventCurrentRampDown	Mask the Event Current Ramp Down
MaskEventCurrentRampUp	Mask the Event Current Ramp Up
MaskEventEndOfCurrentRamp	Mask the Event End Of Current Ramp
MaskEventVoltageLimit	Mask the Event Hardware- voltage limit has been exceeded
MaskEventCurrentLimit	Mask the Event Hardware- current limit has been exceeded
MaskEventTrip	Mask the Event Voltage limit or Current limit or Iset has been exceeded (when KillEnable=1)
MaskEventExtInhibit	Mask the Event External Inhibit
MaskEventVoltageBounds	Mask the Event Voltage out of bounds
MaskEventCurrentBounds	Mask the Event Current out of bounds
MaskEventArcError	Mask the Event Arc error
MaskEventConstantVoltage	Mask the Event Constant Voltage
MaskEventConstantCurrent	Mask the Event Constant Current
MaskEventEndOfRamp	Mask the Event End Of Voltage Ramp
MaskEventOnToOff	Mask the Event change from state on to off
MaskEventInputError	Mask the Event Input Error
MaskEventArc	Mask the Event Arc active
MaskEventRegulationError	Mask the Regulation Error (Option - fast error evaluation)

CAUTION!



CAUTION!

Module in mode KILL disable:
If a bit of the ChannelEventStatus register is set to "1" and the corresponding bit in the ChannelEventMask register is "0", it is not necessary to clear the ChannelEventStatus bit to switch on HV again.

If a bit of the ChannelEventMask register is set to "1" and if the corresponding bit in the ChannelEventStatus is set to "1" by the module firmware then a reset of the corresponding ChannelEventStatus bits is necessary before a switch on the HV of this channel is possible again.

Module in mode KILL enable: A reset of the ChannelEventStatus bits is necessary before switch on the HV of this channel again.

3.5.1.9 Delayed trip time

EDCP frame:

Access	DATA_DIR	DATA_ID	CHN	DATA_1	DATA_0
master single read-	1	0x4005	Mx		
master single MBR read-	1	0x4005	Member		Offset
HV board write access	0	0x4005 / 0x6003	Mx		
Notes: Mx Channel 0 ... 255 Member Members 1 ... 16 Offset Channel member offset 0, 16, 32 ... to access up to 255 channels Timeout-time DATA_0 to DATA_1[ms] UI2 (Range 1 to 4095 ms)					

Time in milliseconds until delayed trip action becomes active and channel is in current control state. Note special functionality for modules with a second low current range – see manual “Delayed trip EHS.pdf”, see 4 Appendix.

3.5.1.10 Delayed trip action (single/ multiple single read-write access)

EDCP frame:

Access	DATA_DIR	DATA_ID	CHN	DATA_0	DATA_1	DATA_2
master write access	0	0x4006	Mx	Action		
master read-	1	0x4006	Mx			
master single MBR read-	1	0x6006	Member		Offset	Action
HV board write access	0	0x4006	Mx	Action		
Notes: Mx Channel 0 ... 255 Member Members 1 ... 16 Offset Channel member offset 0, 16, 32 ... to access up to 255 channels						

Action	Action if a trip event will be initiated
0	no action
1	ramp down high voltage of the channel
2	shut down high voltage of the channel without ramp
3	shut down the whole module without ramp
4	switch off the delayed trip function

3.5.1.11 External channel inhibit

EDCP frame:

Access	DATA_DIR	DATA_ID	CHN	DATA_0	DATA_1	DATA_2
master write access	0	0x4007	Mx	Action		
master read-	1	0x4007	Mx			
master single MBR write-	1	0x6007	Member		Offset	Action
HV board write access	0	0x4007 / 0x6007	Mx	Action		
Notes:						
Mx	Channel	0 ... 255				
Member	Members	1 ... 16				
Offset	Channel member offset	0, 16, 32 ... to access up to 255 channels				

Action	Action if an inhibit signal will be triggered
0	no action
1	ramp down high voltage of the channel
2	shut down high voltage of the channel without ramp
3	shut down the whole module without ramp
4	switch off the external inhibit function

3.5.1.12 VoltageRampPriority (single write- and single/ multiple single read-write access)

EDCP frame:

Access	DATA_DIR	DATA_ID	CHN	DATA_1	DATA_0
master single read-	1	0x4010	Mx		
master single MBR read-	1	0x4010	Member		Offset
HV board write access	0	0x4010 / 0x6010	Mx		
Notes:					
Mx	Channel	0 ... 255			
Member	Members	1 ... 16			
Offset	Channel member offset	0, 16, 32 ... to access up to 255 channels			
VoltageRampPriority	DATA_0 to DATA_1 UI2	(Range 0 to channel number)			

Time in milliseconds until delayed trip action becomes active and channel is in current control state. Note special

3.5.1.13 Set voltage (single write- and single/ multiple single read-write access)

EDCP frame:

Access	DATA_DIR	DATA_ID	CHN	DATA_3	DATA_2	DATA_1	DATA_0
master write access	0	0x4100	Mx	VoltageSet			
master read -	1	0x4100	Mx				
master single MBR read-	1	0x6100	Member		Offset		
HV board write access	0	0x4100/0x6100	Mx	VoltageSet			
Notes:							
Mx	Channel	0 ... 255					
Member	Members	1 ... 16					
Offset	Channel member offset	0, 16, 32 ... to access up to 255 channels					
VoltageSet	DATA_0 to DATA_3 [V]	R4					

The VoltageSet value is the preset for voltage generation. Allowed values are between 0 and the actual hardware limit value. If written values are between the hardware limit and the nominal value, then the module reduces these values to the value of the actual hardware limit. If written values are higher than the nominal data or lower than 0 an input error is indicated by setting the bit InputError.

If the channel is switched 'ON' then the voltage will be ramped to the set value after the receipt of this access. Otherwise the set value will just be stored and only used for ramping to the set voltage after the channel will be switched 'ON'.

3.5.1.14 Set current / trip (single write- and single/ multiple single read-write access)

EDCP frame:

Access	DATA_DIR	DATA_ID	CHN	DATA_3	DATA_2	DATA_1	DATA_0
master write access	0	0x4101	Mx	CurrentSet (CurrentTrip)			
master read -	1	0x4101	Mx				
master single MBR read-	1	0x6101	Member		Offset		
HV board write access	0	0x4101/0x6101	Mx	CurrentSet (CurrentTrip)			
Notes:							
Mx	Channel		0 ... 255				
Member	Members		1 ... 16				
Offset	Channel member offset		0, 16, 32 ... to access up to 255 channels				
CurrentSet (CurrentTrip)	DATA_0 to DATA_3 [A]		R4				

Allowed values are between 0 and the actual hardware limit value. If written values are between the hardware limit and the nominal value, then the module reduces these values to the value of the actual hardware limit. If written values are higher than the nominal data or lower than 0 an input error is indicated by setting the bit InputError.

The mode of action of this item depends on the setting of the signal Kill Enable (KILEna) in the ModuleControl register (see chapter 3.5.2.3 ModuleControl (module write- / read-write access)). If Kill Enable is 0, the value is interpreted as CurrentSet. If Kill Enable is 1, the value is CurrentTrip.

CurrentSet:

The CurrentSet value is the preset for current regulation. If the output current reaches or exceeds the Current Set value, the channel goes into Current Regulation mode. In this mode the output current is regulated at the CurrentSet value, but the output voltage is going to a value between 0V and Vset, depending of the external load.

When Current Control mode is active the bit isConstantCurrent of the ChannelStatus register and the bit EventConstantCurrent of the ChannelEventStatus are set, the bit isConstantVoltage of the ChannelStatus is reset.

CurrentTrip:

In Current Trip mode this value will be used as software current trip. If exceeding this value a current trip event will be registered. The green LED on front panel will be switched off.

The bits isTrip in the ChannelStatus and ETRP in ChannelEventStatus are set, the bit isNoSumError in the ModuleStatus is reset.

3.5.1.15 Voltage measurement (single/ multiple single read-write access)

EDCP frame:

Access	DATA_DIR	DATA_ID	CHN	DATA_3	DATA_2	DATA_1	DATA_0
master read -	1	0x4102	Mx				
master single MBR read-	1	0x6102	Member		Offset		
HV board write access	0	0x4102/0x6102	Mx	VoltageMeasure			
Notes:							
Mx	Channel	0 ... 255					
Member	Members	1 ... 16					
Offset	Channel member offset	0, 16, 32 ... to access up to 255 channels					
VoltageMeasure	DATA_0 to DATA_3 [V]	R4					

3.5.1.16 Current measurement (single/ multiple single read-write access)

EDCP frame:

Access	DATA_DIR	DATA_ID	CHN	DATA_3	DATA_2	DATA_1	DATA_0
master read -	1	0x4103	Mx				
master single MBR read-	1	0x6103	Member		Offset		
HV board write access	0	0x4103/0x6103	Mx	CurrentMeasure			
Notes:							
Mx	Channel	0 ... 255					
Member	Members	1 ... 16					
Offset	Channel member offset	0, 16, 32 ... to access up to 255 channels					
CurrentMeasure	DATA_0 to DATA_3 [A]	R4					

3.5.1.17 Voltage bounds (single write- / single/ multiple single read-write access)

EDCP frame:

Access	DATA_DIR	DATA_ID	CHN	DATA_3	DATA_2	DATA_1	DATA_0
master write access	0	0x4104	MX	VoltageBounds			
master read -	1	0x4104	MX				
master single MBR read-	1	0x6104	Member		Offset		
HV board write access	0	0x4104 / 0x6104	MX	VoltageBounds			
Notes:							
Mx	Channel	0 ... 255					
Member	Members	1 ... 16					
Offset	Channel member offset	0, 16, 32 ... to access up to 255 channels					
VoltageBounds	DATA_0 to DATA_3 [V]	R4 (0 to VoltageNominal)					

3.5.1.18 Current bounds (single write- / single/ multiple single read-write access)

EDCP frame:

Access	DATA_DIR	DATA_ID	CHN	DATA_3	DATA_2	DATA_1	DATA_0
master write access	0	0x4105	MX	CurrentBounds			
master read -	1	0x4105	MX				
master single MBR read-	1	0x6105	Member		Offset		
HV board write access	0	0x4105 / 0x6105	MX	CurrentBounds			
Notes:							
Mx	Channel	0 ... 255					
Member	Members	1 ... 16					
Offset	Channel member offset	0, 16, 32 ... to access up to 255 channels					
CurrentBounds	DATA_0 to DATA_3 [A]	R4 (0 to CurrentNominal)					

3.5.1.19 Nominal voltage (single/ multiple single read-write access)

EDCP frame:

Access	DATA_DIR	DATA_ID	CHN	DATA_3	DATA_2	DATA_1	DATA_0
master read -	1	0x4106	MX				
master single MBR read-	1	0x6106	Member		Offset		
HV board write access	0	0x4106 / 0x6106	MX	VoltageNominal			
Notes:							
Mx	Channel	0 ... 255					
Member	Members	1 ... 16					
Offset	Channel member offset	0, 16, 32 ... to access up to 255 channels					
VoltageNominal	DATA_0 to DATA_3 [V]	R4					

3.5.1.20 Nominal current (single/ multiple single read-write access)

EDCP frame:

Access	DATA_DIR	DATA_ID	CHN	DATA_3	DATA_2	DATA_1	DATA_0
master read -	1	0x4107	MX				
master single MBR read-	1	0x6107	Member		Offset		
HV board write access	0	0x4107 / 0x6107	MX	CurrentNominal			
Notes:							
Mx	Channel	0 ... 255					
Member	Members	1 ... 16					
Offset	Channel member offset	0, 16, 32 ... to access up to 255 channels					
CurrentNominal	DATA_0 to DATA_3 [A]	R4					

3.5.1.21 Current measurement range¹ (single/ multiple single read-write access)

EDCP frame:

Access	DATA_DIR	DATA_ID	CHN	DATA_4	DATA_3	DATA_2	DATA_1	DATA_0
master read -	1	0x4109	MX					
master single MBR read-	1	0x6109	Member		Offset			
HV board write access	0	0x4109 / 0x6109	MX	CurrentMeasure				Range
Notes:								
Mx	Channel	0 ... 255						
Member	Members	1 ... 16						
Offset	Channel member offset	0, 16, 32 ... to access up to 255 channels						
CurrentMeasure	DATA_1 to DATA_4 [A]	R4						
Range	DATA_0=0 – high range ($\geq 20\mu A$)	UI1						
	DATA_0=1 – low range ($< 20\mu A$)							

INFORMATION



INFORMATION

The information channel status bit isLowCurrentRange can be used also.

¹ - for device class 26, 27 and 39, E08F2, E08C2, N06C2 and N04C2 only

3.5.1.22 VoltageBottom (single/ multiple single read-write access)

EDCP frame:

Access	DATA_DIR	DATA_ID	CHN	DATA_3	DATA_2	DATA_1	DATA_0
master write access	0	0x410A	Mx	VoltageBottom			
master read -	1	0x410A	Mx				
master single MBR read-	1	0x610A	Member		Offset		
HV board write access	0	0x410A/0x610A	Mx	VoltageBottom			
Notes:							
Mx	Channel		0 ... 255				
Member	Members		1 ... 16				
Offset	Channel member offset		0, 16, 32 ... to access up to 255 channels				
VoltageSet	DATA_0 to DATA_3 [% of V _{set}]		R4				

3.5.1.23 VCT Coefficient² (single/ multiple single read-write access)

EDCP frame:

Access	DATA_DIR	DATA_ID	CHN	DATA_3	DATA_2	DATA_1	DATA_0
master write access	0	0x4120	Mx	VctCoefficient			
master read -	1	0x4120	Mx				
master single MBR read-	1	0x6120	Member		Offset		
HV board write access	0	0x4120/0x6120	Mx	VctCoefficient			
Notes:							
Mx	Channel		0 ... 255				
Member	Members		1 ... 16				
Offset	Channel member offset		0, 16, 32 ... to access up to 255 channels				
VctCoefficient	DATA_0 to DATA_3 [V/K]		R4				

3.5.1.24 Temperature external³ (single/ multiple single read-write access)

EDCP frame:

Access	DATA_DIR	DATA_ID	CHN	DATA_3	DATA_2	DATA_1	DATA_0
master read -	1	0x4121	Mx				
master single MBR read-	1	0x6121	Member		Offset		
HV board write access	0	0x4121/0x6121	Mx	TemperatureExternal			
Notes:							
Mx	Channel		0 ... 255				
Member	Members		1 ... 16				
Offset	Channel member offset		0, 16, 32 ... to access up to 255 channels				
TemperatureExternal	DATA_0 to DATA_3 [°C]		R4				

² Option VCT only

³ Option VCT only

3.5.1.25 Resistor external⁴ (single/ multiple single read-write access)

EDCP frame:

Access	DATA_DIR	DATA_ID	CHN	DATA_3	DATA_2	DATA_1	DATA_0
master write access	0	0x4122	MX	ResistorExternal			
master read -	1	0x4122	Mx				
master single MBR read-	1	0x6122	Member	Offset			
HV board write access	0	0x4122/0x6122	Mx	ResistorExternal			
Notes:							
Mx	Channel	0 ... 255					
Member	Members	1 ... 16					
Offset	Channel member offset	0, 16, 32 ... to access up to 255 channels					
ResistorExternal	DATA_0 to DATA_3 [Ω]	R4					

3.5.1.26 VoltageRampSpeedUp (single write- / single/ multiple single read-write access)

EDCP frame:

Access	DATA_DIR	DATA_ID	CHN	DATA_3	DATA_2	DATA_1	DATA_0
master write access	0	0x4123	MX	VoltageRampSpeedUp			
master read -	1	0x4123	MX				
master single MBR read-	1	0x6123	Member		Offset		
HV board write access	0	0x4123 / 0x6123	MX	VoltageRampSpeedUp			
Notes:							
Mx	Channel		0 ... 255				
Member	Members		1 ... 16				
Offset	Channel member offset		0, 16, 32 ... to access up to 255 channels				
VoltageRampSpeedUp	DATA_0 to DATA_3 [V/s]		R4 (VoltageRampSpeedMin to VoltageRampSpeedMax)				

3.5.1.27 VoltageRampSpeedDown (single write- / single/ multiple single read-write access)

EDCP frame:

Access	DATA_DIR	DATA_ID	CHN	DATA_3	DATA_2	DATA_1	DATA_0
master write access	0	0x4124	MX	VoltageRampSpeedDown			
master read -	1	0x4124	MX				
master single MBR read-	1	0x6124	Member		Offset		
HV board write access	0	0x4124 / 0x6124	MX	VoltageRampSpeedDown			
Notes:							
Mx	Channel	0 ... 255					
Member	Members	1 ... 16					
Offset	Channel member offset	0, 16, 32 ... to access up to 255 channels					
VoltageRampSpeedDown	DATA_0 to DATA_3 [V/s]	R4 (VoltageRampSpeedMin to VoltageRampSpeedMax)					

⁴ Option EHS STACK

3.5.1.28 CurrentRampSpeedUp (single write- / single/ multiple single read-write access)

EDCP frame:

Access	DATA_DIR	DATA_ID	CHN	DATA_3	DATA_2	DATA_1	DATA_0
master write access	0	0x4123	MX	CurrentRampSpeedUp			
master read -	1	0x4123	MX				
master single MBR read-	1	0x6123	Member		Offset		
HV board write access	0	0x4123 / 0x6123	MX	CurrentRampSpeedUp			
Notes:							
Mx	Channel		0 ... 255				
Member	Members		1 ... 16				
Offset	Channel member offset		0, 16, 32 ... to access up to 255 channels				
CurrentRampSpeedUp	DATA_0 to DATA_3 [A/s]		R4 (CurrentRampSpeedMin to CurrentRampSpeedMax)				

3.5.1.29 CurrentRampSpeedDown (single write- / single/ multiple single read-write access)

EDCP frame:

Access	DATA_DIR	DATA_ID	CHN	DATA_3	DATA_2	DATA_1	DATA_0
master write access	0	0x4124	MX	CurrentRampSpeedDown			
master read -	1	0x4124	MX				
master single MBR read-	1	0x6124	Member		Offset		
HV board write access	0	0x4124 / 0x6124	MX	CurrentRampSpeedDown			
Notes:							
Mx	Channel	0 ... 255					
Member	Members	1 ... 16					
Offset	Channel member offset	0, 16, 32 ... to access up to 255 channels					
VoltageRampSpeedDown	DATA_0 to DATA_3 [A/s]	R4 (CurrentRampSpeedMin to CurrentRampSpeedMax)					

3.5.1.30 VoltageRampSpeedMin (single write- / single/ multiple single read-write access)

EDCP frame:

Access	DATA_DIR	DATA_ID	CHN	DATA_3	DATA_2	DATA_1	DATA_0
master write access	0	0x4127	MX	VoltageRampSpeedMin			
master read -	1	0x4127	MX				
master single MBR read-	1	0x6127	Member		Offset		
HV board write access	0	0x4127 / 0x6127	MX	VoltageRampSpeedMin			
Notes:							
Mx	Channel	0 ... 255					
Member	Members	1 ... 16					
Offset	Channel member offset	0, 16, 32 ... to access up to 255 channels					
VoltageRampSpeedMin	DATA_0 to DATA_3 [V/s]	R4					

3.5.1.31 VoltageRampSpeedMax (single write- / single/ multiple single read-write access)

EDCP frame:

Access	DATA_DIR	DATA_ID	CHN	DATA_3	DATA_2	DATA_1	DATA_0
master write access	0	0x4128	MX	VoltageRampSpeedMax			
master read -	1	0x4128	MX				
master single MBR read-	1	0x6128	Member		Offset		
HV board write access	0	0x4128 / 0x6128	MX	VoltageRampSpeedMax			
Notes:							
Mx	Channel		0 ... 255				
Member	Members		1 ... 16				
Offset	Channel member offset		0, 16, 32 ... to access up to 255 channels				
VoltageRampSpeedMax	DATA_0 to DATA_3 [V/s]		R4				

3.5.1.32 CurrentRampSpeedMin (single write- / single/ multiple single read-write access)

EDCP frame:

Access	DATA_DIR	DATA_ID	CHN	DATA_3	DATA_2	DATA_1	DATA_0
master write access	0	0x4129	MX	CurrentRampSpeedMin			
master read -	1	0x4129	MX				
master single MBR read-	1	0x6129	Member		Offset		
HV board write access	0	0x4129 / 0x6129	MX	CurrentRampSpeedMin			
Notes:							
Mx	Channel		0 ... 255				
Member	Members		1 ... 16				
Offset	Channel member offset		0, 16, 32 ... to access up to 255 channels				
CurrentRampSpeedMin	DATA_0 to DATA_3 [A/s]		R4				

3.5.1.33 CurrentRampSpeedMax (single write- / single/ multiple single read-write access)

EDCP frame:

Access	DATA_DIR	DATA_ID	CHN	DATA_3	DATA_2	DATA_1	DATA_0
master write access	0	0x4130	MX	CurrentRampSpeedMax			
master read -	1	0x4130	MX				
master single MBR read-	1	0x6130	Member		Offset		
HV board write access	0	0x4130 / 0x6130	MX	CurrentRampSpeedMax			
Notes:							
Mx	Channel		0 ... 255				
Member	Members		1 ... 16				
Offset	Channel member offset		0, 16, 32 ... to access up to 255 channels				
CurrentRampSpeedMax	DATA_0 to DATA_3 [A/s]		R4				

3.5.1.34 Output mode⁵ (single/ multiple single read-write access)

EDCP frame:

Access	DATA_DIR	DATA_ID	CHN	DATA_0
master write access	0	0x4140	Mx	Mode
master read -	1	0x4140	Mx	
master single MBR read-	1	0x6140	Member	Offset
HV board write access	0	0x4120/0x6120	Mx	Mode
Notes: Mx Channel 0 ... 255 Member Members 1 ... 16 Offset Channel member Offset 0, 16, 32 ... to access up to 255 channels Mode DATA_0 UI1 (HV MODE = 1, 2 or 3)				

3.5.1.35 Output polarity⁶ (single/ multiple single read-write access)

EDCP frame:

Access	DATA_DIR	DATA_ID	CHN	DATA_0
master write access	0	0x4141	Mx	Polarity
master read -	1	0x4141	Mx	
master single MBR read-	1	0x6141	Member	Offset
HV board write access	0	0x4121/0x6121	Mx	Polarity
Notes: Mx Channel 0 ... 255 Member Members 1 ... 16 Offset Channel member offset 0, 16, 32 ... to access up to 255 channels Polarity DATA_0 SI1 (Positive = +1, Negative = -1)				

3.5.1.36 Output voltage mode⁷ (single/ multiple single read-write access)

EDCP frame:

Access	DATA_DIR	DATA_ID	CHN	DATA_3	DATA_2	DATA_1	DATA_0
master read -	1	0x4142	Mx				
master single MBR read-	1	0x6142	Member		Offset		
HV board write access	0	0x4142/0x6142	Mx	VoltageMode			
Notes:							
Mx	Channel	0 ... 255					
Member	Members	1 ... 16					
Offset	Channel member offset	0, 16, 32 ... to access up to 255 channels					
VoltageMode	DATA_0 to DATA_3 [V]	R4 (+6000, +4000, +2000, -2000, -4000 or -6000)					

⁵ Option HV-MODE SWITCHABLE

⁶ Option POLARITY SWITCHABLE

⁷ Option HV-MODE SWITCHABLE

3.5.1.37 Output current mode⁸ (single/ multiple single read-write access)

EDCP frame:

Access	DATA_DIR	DATA_ID	CHN	DATA_3	DATA_2	DATA_1	DATA_0
master read -	1	0x4143	Mx				
master single MBR read-	1	0x6143	Member		Offset		
HV board write access	0	0x4143/0x6143	Mx	CurrentMode			
Notes:							
Mx	Channel	0 ... 255					
Member	Members	1 ... 16					
Offset	Channel member offset	0, 16, 32 ... to access up to 255 channels					
CurrentMode	DATA_0 to DATA_3 [A]	R4 (+4.0E-3, +3.0E-3, +2.0E-3, +0.1E-3, -0.1E-3, -2.0E-3, -3.0E-3 or -4.0E-3)					

3.5.1.38 Output voltage mode list⁹ (single/ multiple single read-write access)

EDCP frame:

Access	DATA_DIR	DATA_ID	CHN	DATA_3	DATA_2	DATA_1	DATA_0
master read -	1	0x4150 - 0x415f	Mx				
master single MBR read-	1	0x6150 - 0x415f	Member		Offset		
HV board write access	0	0x4150/0x6150	Mx	VoltageModeList			
Notes:							
Mx	Channel	0 ... 255					
Member	Members	1 ... 16					
Offset	Channel member offset	0, 16, 32 ... to access up to 255 channels					
VoltageModeList	DATA_0 to DATA_3 [V]	R4 (+6000, +4000, +2000, -2000, -4000 or -6000)					

3.5.1.39 Output current mode list¹⁰ (single/ multiple single read-write access)

EDCP frame:

Access	DATA_DIR	DATA_ID	CHN	DATA_3	DATA_2	DATA_1	DATA_0
master read -	1	0x4143	Mx				
master single MBR read-	1	0x6143	Member		Offset		
HV board write access	0	0x4143/0x6143	Mx	CurrentMode			
Notes:							
Mx	Channel	0 ... 255					
Member	Members	1 ... 16					
Offset	Channel member offset	0, 16, 32 ... to access up to 255 channels					
VoltageMode	DATA_0 to DATA_3 [A]	R4 (+4.0E-3, +3.0E-3, +2.0E-3, +0.1E-3, -0.1E-3, -2.0E-3, -3.0E-3 or -4.0E-3)					

⁸ Option HV-MODE SWITCHABLE

⁹ Option HV-MODE SWITCHABLE

¹⁰ Option HV-MODE SWITCHABLE

3.5.1.40 Group number (single/ multiple single read-write access)

EDCP frame:

Access	DATA_DIR	DATA_ID	CHN	DATA_0		
master write access	0	0x4200	Mx	GROUP		
master read -	1	0x4200	Mx			
master single MBR read-	1	0x6200	Member		Offset	GROUP
HV board write access	0	0x4200	Mx	GROUP		
Notes:						
Mx	Channel		0 ... 255			
Member	Members		1 ... 16			
Offset	Channel member offset		0, 16, 32 ... to access up to 255 channels			
Group	Group number of the channel members		0 .. 255			

With a group number GROUP for each channel, channels can be combined to groups involving all connected modules. The NMT channel group set and the NMT module set frames (described on page 38) send broadcast information for all channels, which have the same group number.

3.5.2 EDCP Module Accesses

3.5.2.1 ModuleStatus (module read-write access)

EDCP frame:

Access	DATA_DIR	DATA_ID	DATA_1	DATA_0
master read-	1	0x1000		
HV board write access	0	0x1000	ModuleStatus	
Notes: ModuleStatus DATA_0 to DATA_1 UI2				

Bit15	Bit14	Bit13	Bit12	Bit11	Bit10	Bit09	Bit08
isKillEnable	isTemperature Good	isSupplyGood	isModuleGood	isEvtActive	isSafetyLoop Good	isNoRamp	isNoSumError
Bit07	Bit06	Bit05	Bit04	Bit03	Bit02	Bit01	Bit00
Reserved	isInputError	isHardware VoltageLimit Good	needService	isHighVoltage On	isLiveInsertion	Reserved	isAdjust

3.5.2.2 ModuleStatus32 (module read-write access)

EDCP frame:

Access	DATA_DIR	DATA_ID	DATA_3	DATA_2	DATA_1	DATA_0
master read-	1	0x1080				
HV board write access	0	0x1080	ModuleStatus32			
Notes: ModuleStatus32 DATA_0 to DATA_4 UI4						

Bit31	Bit30	Bit29	Bit28	Bit27	Bit26	Bit25	Bit24
Reserved	Reserved	Reserved	Reserved	Reserved	Reserved	Reserved	Reserved
Bit23	Bit22	Bit21 ⁽¹⁾	Bit20	Bit19	Bit18	Bit17	Bit16 ⁽¹⁾
Reserved	Reserved	is Voltage Ramp Speed Limited	Reserved	Reserved	Reserved	Reserved	is Fast Ramp Down
Bit15	Bit14	Bit13	Bit12	Bit11	Bit10	Bit09	Bit08
isKillEnable	is Temperature Good	isSupplyGood	isModule Good	isEvent Active	isSafetyLoop Good	isNoRamp	isNoSum Error
Bit07	Bit06	Bit05	Bit04	Bit03	Bit02	Bit01	Bit00
Reserved	is Input Error	isHardware VoltageLimit Good	needService	isHigh Voltage On	isLiveInsertion	Reserved	is Fine Adjustment
Notes:							

The status bit `IsCommandComplete` indicates whether all CAN commands given to the module have been executed.

Bit	Name	Description
isKillEnable		Module state of kill enable <div> <div>isKillEnable=0</div> <div>Module in state kill disable</div> </div> <div> <div>isKillEnable=1</div> <div>Module in state kill enable</div> </div>
isTemperatureGood		Module temperature good <div> <div>isTemperatureGood=0</div> <div>If module temperature is higher than 55°C then all channel are switched off permanently</div> </div> <div> <div>isTemperatureGood=1</div> <div>module temperature is within working range</div> </div>
isSupplyGood		Power supply good <div> <div>isSupplyGood=0</div> <div>supply voltages are out of range (range of 24V +/-10% and of 5V +/-5%)</div> </div> <div> <div>isSupplyGood=1</div> <div>supply voltages are within range</div> </div>
isModuleGood		Module in state good <div> <div>isModuleGood=0</div> <div>module is not good, that means (isnoSERR AND (ETMPngd OR ESPLYngd OR ESFLPngd))==0</div> </div> <div> <div>isModuleGood=1</div> <div>module is good, that means (isnoSERR AND NOT(ETMPngd OR ESPLYngd OR ESFLPngd))==1 (see module event status also)</div> </div>
isEventActive		Any event is active and mask is set <div> <div>isEventActive=0</div> <div>no Event is active</div> </div> <div> <div>isEventActive=1</div> <div>any Event is active</div> </div>
isSafetyLoopGood		Safety loop closed <div> <div>isSafetyLoopGood=0</div> <div>safety loop is broken -VO has been shut off,</div> </div> <div> <div>isSafetyLoopGood=1</div> <div>safety loop is closed</div> </div>
isNoRamp		All channels stable, no ramp active <div> <div>isNoRamp=0</div> <div>voltage output is ramping in at least one channel</div> </div> <div> <div>isNoRamp=1</div> <div>no channel is ramping</div> </div>
isNoSumError		All channels without failure <div> <div>isNoSumError=0</div> <div>voltage limit, current limit, trip, voltage bound or current bound has been exceeded in at least one of the channels or external INHIBIT → error, reset by reset of the corresponding flag of the 'channel status'</div> </div> <div> <div>isnoSumERR=1</div> <div>evaluation of the 'Channel Status' over all channels to a sum error flag → LIM&CLIM&CTRP&EINH&VBND&CBND=0 → no errors</div> </div>

Bit	Name	Description
isInputError		Input error in connection with a module access isInputError=1 input error in connection with a module access isInputError=0 no input error in connection with a module access
isHardwareVoltageLimitGood		Hardware voltage limit in proper range, for HV distributor modules with current mirror only isHardwareVoltageLimitGood=0 hardware voltage limit not in proper range isHardwareVoltageLimitGood=1 hardware voltage limit in proper range
isServiceNeeded		Hardware failure detected (consult iseg Spezialelektronik GmbH) isServiceNeeded=0 Module is ready for working isServiceNeeded=1 Module need a service
isHighVoltageOn		At least one channel generates a high voltage isHighVoltageOn=0 No high voltage will be generated isHighVoltageOn=1 At least one channel generates a high voltage output. (Modules with 7 digit serial number only.)
isLiveInsertion		Mode live insertion isLiveInsertion=0 no Live Insertion mode isLiveInsertion=1 Live Insertion mode
isFineAdjustment		Mode of the fine adjustment isFineAdjustment=0 Fine adjustment is off. isFineAdjustment=1 Fine adjustment is on (default).
Reserved		

3.5.2.3 ModuleControl (module write- / read-write access)

EDCP frame:

Access	DATA_DIR	DATA_ID	DATA_1	DATA_0
master write access	0	0x1001	ModuleControl	
master read-	1	0x1001		
HV board write access	0	0x1001	ModuleControl	
Notes: ModuleControl DATA_0 to DATA_1 (Bit 0 -15) UI2				

3.5.2.4 ModuleControl32 (module write- / read-write access)

EDCP frame:

Access	DATA_DIR	DATA_ID	DATA_3	DATA_2	DATA_1	DATA_0
master write	0	0x1081	ModuleControl32			
master read-	1	0x1081				
HV board write access	0	0x1081	ModuleControl32			
Notes: ModuleControl32 DATA_0 to DATA_3 (Bit 0 -31) UI4						

Bit31	Bit30	Bit29	Bit28	Bit27	Bit26	Bit25	Bit24
Reserved	Reserved	Reserved	Reserved	Reserved	Reserved	Reserved	Reserved
Bit23	Bit22	Bit21	Bit20	Bit19	Bit18	Bit17	Bit16
Reserved	Reserved	Reserved	Reserved	Reserved	Reserved	setRelay Three	disable VoltageRamp SpeedLimit
Bit15	Bit14	Bit13	Bit12	Bit11	Bit10	Bit09	Bit08
Reserved	set KillEnable	setR2	setFine Adjustment	setBigEndian	Reserved	Reserved	Reserved
Bit07	Bit06	Bit05	Bit04	Bit03	Bit02	Bit01	Bit00
setRelayOne	doClear	setInterlock	doMultiplex	Reserved	Reserved	Reserved	Reserved
Notes:							

Bit	Description
setRelayThree	
disableVoltageRampSpeedLimit	Switch off voltage ramp speed limitation
killEnable	Kill function SetKILL = 0 kill function disable setKILL = 1 kill function enable
adjust	Switch ON of fine adjustment setADJ = 0 fine adjustment OFF setADJ = 1 fine adjustment ON
setBigEndian	Order of bytes in word: 0 = Little Endian (INTEL); 1 = Big Endian (MOTOROLA) setENDN = 1 big endian (MOTOROLA format)
clearKill	Hardware ClearKill signal and clear all event signals of module and channels doCLEAR = 1 Hardware ClearKill signal and clear all event signals of the module and the channels doCLEAR = 0 no action
Interlock	Interlock signal CRATE_ENABLE (WIENER MPOD crate, active TTL high) setILK = 1 INTERLOCK signal in order to switch off HV and set bit EEINH of the EventStatus for all channels setILK = 0 reset the INTERLOCK signal in order to clear the bit EEINH of the EventStatus for all channels
doMultiplex	Switch on multiplexing, for electronic load (EZL) only
	doMux = 0 switch off multiplexing doMux = 1 switch on multiplexing
setRelayOne	Switch on load one, for electronic load (EZL) only
setRelayTwo	Switch on load two, for electronic load (EZL) only
	setR1/2/3 = 0 switch off load 1, 2 or 3 setR1/2/3 = 1 switch on load 1, 2 or 3
Reserved	

3.5.2.5 ModuleEventStatus (module write- / read-write access)

EDCP frame:

Access	DATA_DIR	DATA_ID	DATA_1	DATA_0
master write	0	0x1002	ModuleEventStatus	
master read-	1	0x1002		
HV board write access	0	0x1002	ModuleEventStatus	
Notes: ModuleEventStatus DATA_0 to DATA_1 UI2				

3.5.2.6 ModuleEventStatus32 (single/ multiple single read-write access)

EDCP frame:

Access	DATA_DIR	DATA_ID	DATA_3	DATA_2	DATA_1	DATA_0
master write	0	0x1082	ModuleEventStatus32			
master read-	1	0x1082				
HV board write access	0	0x1082	ModuleEventStatus32			
Notes: ModuleEventStatus DATA_0 to DATA_1 UI2						

Bit31	Bit30	Bit29	Bit28	Bit27	Bit26	Bit25	Bit24
Reserved	Reserved	Reserved	Reserved	Reserved	Reserved	Reserved	Reserved
Bit23	Bit22	Bit21	Bit20	Bit19	Bit18	Bit17	Bit16
Reserved	Reserved	Reserved	Reserved	Reserved	Reserved	Reserved	Reserved
Bit15	Bit14	Bit13	Bit12	Bit11	Bit10	Bit09	Bit08
Reserved	Event Temperature Not Good	Event Supply Not Good	Reserved	Reserved	Event Safety Loop Not Good	Reserved	Reserved
Bit07	Bit06	Bit05	Bit04	Bit03	Bit02	Bit01	Bit00
Reserved	Event Input Error	Event Hardware Voltage Limit Not Good	Event Service	Reserved	Event Live Insertion	Reserved	Reserved

Bit	Name	Description
ETMPngd	Event Temperature Not Good	Event: Temperature is above 55°C
ESPLYngd	Event Supply Not Good	Event: at least one of the supplies is not good
ESFLPngd	Event Safety Loop Not Good	Event: Safety loop is open
EIERR	Event Input Error	Event: input error in connection with a module access
EHwVLngd	Event Hardware Voltage Limit Not Good	Event: Hardware voltage limit is not in proper range, only for HV distributor modules with current mirror;
ESrvs	Event Service	Event: A hardware failure of the HV module has been detected. The HV will be switched off without a possibility to switch on again. Please consult the iseg Spzialelektronik GmbH.
ELVINS	Event Live Insertion	Event live insertion to prepare a hot plug of a module
res	Reserved	

3.5.2.7 ModuleEventMask (module write- / read-write access)

EDCP frame:

Access	DATA_DIR	DATA_ID	DATA_1	DATA_0
master write	0	0x1003	ModuleEventMask	
master read-	1	0x1003		
HV board write access	0	0x1003	ModuleEventMask	
Notes: ModuleEventMask DATA_0 to DATA_1 UI2				

3.5.2.8 ModuleEventMask32 (module write- / read-write access)

EDCP frame:

Access	DATA_DIR	DATA_ID	DATA_3	DATA_2	DATA_1	DATA_0
master write	0	0x1083	ModuleEventMask32			
master read-	1	0x1083				
HV board write access	0	0x1083	ModuleEventMask32			
Notes: ModuleEventMask32 DATA_0 to DATA_3 UI3						

Bit31	Bit30	Bit29	Bit28	Bit27	Bit26	Bit25	Bit24
Reserved	Reserved	Reserved	Reserved	Reserved	Reserved	Reserved	Reserved
Bit23	Bit22	Bit21	Bit20	Bit19	Bit18	Bit17	Bit16
Reserved	Reserved	Reserved	Reserved	Reserved	Reserved	Reserved	Reserved
Bit15	Bit14	Bit13	Bit12	Bit11	Bit10	Bit09	Bit08
Reserved	Mask Event Temperature Not Good	Mask Event Supply Not Good	Reserved	Reserved	Mask Event Safety Loop Not Good	Reserved	Reserved
Bit07	Bit06	Bit05	Bit04	Bit03	Bit02	Bit01	Bit00
Reserved	Mask Event Input Error	Mask Event Hardware Voltage Limit Not Good	Reserved	Reserved	Reserved	Reserved	Reserved

Bit	Name	Description
METMPngd	Mask Event Temperature Not Good	MEventMask: Temperature is above 55°C
MESPLYngd	Mask Event Supply Not Good	MEventMask: at least one of the supplies is not good
MESFLPngd	Mask Event Safety Loop Not Good	MEventMask: Safety loop (SL) is open
MEIERR	Mask Event Input Error	MEventMask: Input error in connection with a module access
MEHWLNgd	Mask Event Hardware Voltage Limit Not Good	MEventMask: Hardware voltage limit is not in proper range, only for HV distributor modules with current mirror;
Reserved	Reserved	

All bits of the EventMask register are set to "0" after the power on reset.

Module in mode KILL enable: If a bit of the EventStatus register is set to "1" and the corresponding bit in the EventMask register is "0" no reset of the EventStatus bits is necessary before switch on the HV of any channel again.

If a bit of the EventMask register is set to "1" and if the corresponding bit in the EventStatus is set to "1" by the module firmware a reset of the corresponding EventStatus bits is necessary before a switch on the HV of any channel is possible.

Module in mode KILL enable: A reset of the EventStatus bits is necessary before switch on the HV of any channel is possible.

3.5.2.9 ModuleEventChannelStatus (module write- / read-write access)

EDCP frame:

Access	DATA_DIR	DATA_ID	DATA_2	DATA_1	DATA_0
master write access	0	0x1004	Offset	ModuleEventChannelStatus	
master read-	1	0x1004	Offset		
HV board write access	0	0x1004	Offset	ModuleEventChannelStatus	
Notes:					
Offset		DATA_2Channel member offset		0, 16, 32 ... access up to 255 channels	
EventChannelStatus		DATA_0 to DATA_1		UI2	

3.5.2.10 ModuleEventChannelStatus32 (module write- / read-write access)

EDCP frame:

Access	DATA_DIR	DATA_ID	DATA_2	DATA_3	DATA_2	DATA_1	DATA_0
master write access	0	0x1084	Offset	ModuleEventChannelStatus			
master read-	1	0x1084	Offset				
HV board write access	0	0x1084	Offset	ModuleEventChannelStatus			
Notes:							
Offset		DATA_2Channel member offset		0, 16, 32 ... access up to 255 channels			
EventChannelStatus32		DATA_0 to DATA_3		UI4			

Bit31	Bit30	Bit29	Bit28	Bit27	Bit26	Bit25	Bit24
CH31	CH30	Ch29	CH28	CH27	CH26	CH25	CH24
Bit23	Bit22	Bit21	Bit20	Bit19	Bit18	Bit17	Bit16
CH23	CH22	Ch21	CH20	CH19	CH18	CH17	CH16
Bit15	Bit14	Bit13	Bit12	Bit11	Bit10	Bit09	Bit08
CH15	CH14	Ch13	CH12	CH11	CH10	CH9	CH8
Bit07	Bit06	Bit05	Bit04	Bit03	Bit02	Bit01	Bit00
CH07	CH06	CH05	CH04	CH03	CH02	CH01	CH00

The n-th bit of the register is set, if an event is active in the n-th channel and the associated bit in the EventMask register of the n-th channel is set too.

$$CH_n = \text{EventStatus}[n] \& \text{EventMask}[n]$$

Reset of a bit is done by writing a 1 to this bit.

3.5.2.11 ModuleEventChannelMask (module write- / read-write access)

EDCP frame:

Access	DATA_DIR	DATA_ID	DATA_2	DATA_1	DATA_0
master write access	0	0x1005	Offset	ModuleEventChannelMask	
master read-	1	0x1005	Offset		
HV board write access	0	0x1005	Offset	ModuleEventChannelMask	
Notes:					
Offset	DATA_2Channel member offset		0, 16, 32 ... access up to 255 channels		
EventChannelMask	DATA_0 to DATA_1		UI2		

3.5.2.12 ModuleEventChannelMask32 (module write- / read-write access)

EDCP Frame:

Access	DATA_DIR	DATA_ID	DATA_2	DATA_3	DATA_2	DATA_1	DATA_0
master write access	0	0x1085	Offset	ModuleEventChannelMask32			
master read-	1	0x1085	Offset				
HV board write access	0	0x1085	Offset	ModuleEventChannelMask32			
Notes:							
Offset	DATA_2Channel member offset		0, 16, 32 ... access up to 255 channels				
EventChannelMask32	DATA_0 to DATA_3		UI4				

Bit31	Bit30	Bit29	Bit28	Bit27	Bit26	Bit25	Bit24
Mask CH31	Mask CH30	Mask CH29	Mask CH28	Mask CH27	Mask CH26	Mask CH25	Mask CH24
Bit23	Bit22	Bit21	Bit20	Bit19	Bit18	Bit17	Bit16
Mask CH23	Mask CH22	Mask CH21	Mask CH20	Mask CH19	Mask CH18	Mask CH17	Mask CH16
Bit15	Bit14	Bit13	Bit12	Bit11	Bit10	Bit09	Bit08
Mask CH15	Mask CH14	Mask CH13	Mask CH12	Mask CH11	Mask CH10	Mask CH9	Mask CH8
Bit07	Bit06	Bit05	Bit04	Bit03	Bit02	Bit01	Bit00
Mask CH7	Mask CH6	Mask CH5	Mask CH4	Mask CH3	Mask CH2	Mask CH1	Mask CH0

This register decides whether a pending event leads to the sum event flag of the module or not. If the n-th bit of the Mask is set and the n-th channel has an active event in the ModuleEventChannelStatus the bit isEventActive in the ModuleStatus register is set.

3.5.2.13 ModuleEventGroupStatus (module write- / read-write access)

EDCP frame:

Access	DATA_DIR	DATA_ID	DATA_3	DATA_2	DATA_1	DATA_0
master write access	0	0x1005	ModuleEventGroupStatus			
master read-	1	0x1005				
HV board write access	0	0x1005	ModuleEventGroupStatus			
Notes:						
EventGroupStatus	DATA_0 to DATA_3		UI4			

Bit31	Bit30	Bit29	Bit28	Bit27	Bit26	Bit25	Bit24
Group31	Group30	Group29	Group28	Group27	Group26	Group25	Group24
Bit23	Bit22	Bit21	Bit20	Bit19	Bit18	Bit17	Bit16
Group23	Group22	Group21	Group20	Group19	Group18	Group17	Group16
Bit15	Bit14	Bit13	Bit12	Bit11	Bit10	Bit09	Bit08
Group15	Group14	Group13	Group12	Group11	Group10	Group9	Group8
Bit07	Bit06	Bit05	Bit04	Bit03	Bit02	Bit01	Bit00
Group07	Group06	Group05	Group04	Group03	Group02	Group01	Group00

The n-th bit of this double word register is set, if an event is active in the n-th Group.

Reset of a bit is done by writing a 1 to this bit.

3.5.2.14 ModuleEventGroupMask (module write- / read-write access)

EDCP frame:

Access	DATA_DIR	DATA_ID	DATA_3	DATA_2	DATA_1	DATA_0
master write access	0	0x1006	ModuleEventGroupMask			
master read-	1	0x1006				
HV board write access	0	0x1006	ModuleEventGroupMask			
Notes: EventGroupMask DATA_0 to DATA_3 UI4						

Bit31	Bit30	Bit29	Bit28	Bit27	Bit26	Bit25	Bit24
Mask31	Mask30	Mask29	Mask28	Mask27	Mask26	Mask25	Mask24
Bit23	Bit22	Bit21	Bit20	Bit19	Bit18	Bit17	Bit16
Mask23	Mask22	Mask21	Mask20	Mask19	Mask18	Mask17	Mask16
Bit15	Bit14	Bit13	Bit12	Bit11	Bit10	Bit09	Bit08
Mask15	Mask14	Mask13	Mask12	Mask11	Mask10	Mask09	Mask08
Bit07	Bit06	Bit05	Bit04	Bit03	Bit02	Bit01	Bit00
Mask07	Mask06	Mask05	Mask04	Mask03	Mask02	Mask01	Mask00

This register decides whether a pending event leads to the sum event flag of the module or not. If the n-th bit of the mask is set and the n-th group has an active event in the ModuleEventGroupStatus the bit isEventActive in the ModuleStatus register is set.

3.5.2.15 VoltageRampSpeed (module write- / read-write access)

EDCP frame:

Access	DATA_DIR	DATA_ID	DATA_3	DATA_2	DATA_1	DATA_0
master write access	0	0x1100	VoltageRampSpeed			
master read-	1	0x1100				
HV board write access	0	0x1100	VoltageRampSpeed			
Notes:						
VoltageRampSpeed	DATA_0 to DATA_3 [%]		R4			

Voltage ramp speed range (disable Kill) $1\text{ mV/s} \leq \text{Ramp speed} \leq 20\% \text{ of } V_{O \text{ max/s}}$

Option: fast ramp

1	$1\text{ mV/s} \leq \text{Ramp speed} \leq 25\% \text{ of VoltageNominal}$
2	$1\text{ mV/s} \leq \text{Ramp speed} \leq 50\% \text{ of VoltageNominal}$
3	$1\text{ mV/s} \leq \text{Ramp speed} \leq 75\% \text{ of VoltageNominal}$

Voltage ramp speed range (enable Kill): $1\text{ mV/s} \leq \text{Ramp speed} \leq 1\% \text{ of } V_{O \text{ max/s}}$

The speed of the voltage ramp in percent of the nominal voltage of the channel per second.

3.5.2.16 CurrentRampSpeed – current controlled modules only (module write- / read-write access)

EDCP frame:

Access	DATA_DIR	DATA_ID	DATA_3	DATA_2	DATA_1	DATA_0
master write access	0	0x1101	CurrentRampSpeed			
master read-	1	0x1101				
HV board write access	0	0x1101	CurrentRampSpeed			
Notes:						
CurrentRampSpeed	DATA_0 to DATA_3 [%]		R4			

Current ramp speed range: $2\% \text{ IO max/s} \leq \text{Ramp speed} \leq \text{IO max/s}$

The speed of the current ramp in percent of the nominal current of the channel per second.

3.5.2.17 VoltageMax – OPTION (module read-write access)

EDCP frame:

Access	DATA_DIR	DATA_ID	DATA_3	DATA_2	DATA_1	DATA_0
master read-	1	0x1102				
HV board write access	0	0x1102	VoltageMax			
Notes:						
HardwareVoltageLimit		DATA_0 to DATA_3 [%]	R4			

HV Modules with the OPTION hardware voltage limit can adjust VO max via the potentiometer Vmax.

For HV Modules without this OPTION VoltageMax equals to VO max.

The exceeding of the hardware voltage limit results in a limitation of the voltage when the KILL-enable.

The absolute value of the hardware voltage limit will compute by following:

$$\text{Voltage limit of the channel } x \text{ (Chx)} = \text{VoltageNominal[Chx]} \cdot \text{VoltageMax}$$

The module responds after the hardware voltage limit has been exceeded:

The green LED on front panel is off.

Depends of the kind of module:

Hardware KILL function controlled by the bit 'KILenα' of the ModuleControl word:

- | | |
|------------------|--|
| KILL-enable = 1: | The voltage will be switched off permanently without ramp.
ChannelEventStatus flag 'EVLIM' will be set. |
| KILL-enable = 0: | The voltage will be reduced to the value of the actual hardware voltage limit.
ChannelStatus flag 'isVLIM' and ChannelEventStatus flag 'EVLIM' will be set. |

Software KILL function controlled by the bit 'KILena' of the ChannelControl word:

- | | |
|------------------|--|
| KILL-enable = 1: | Voltage will be switched off permanently without ramp.
ChannelEventStatus flag 'EVLIM' will be set. |
| KILL-enable = 0: | Voltage will be switched off without ramp. If the output voltage arrives at 0 V the
ramping to set voltage will be restarted automatically. ChannelStatus flag 'isVLIM' and
ChannelEventStatus flag 'EVLIM' will be set. |

3.5.2.18 CurrentMax – OPTION (module read-write access)

EDCP frame:

Access	DATA_DIR	DATA_ID	DATA_3	DATA_2	DATA_1	DATA_0
master read-	1	0x1103				
HV board write access	0	0x1103	CurrentMax			
Notes:						
HardwareCurrentLimit		DATA_0 to DATA_3 [%]	R4			

HV Modules with the OPTION CurrentMax can adjust the IO max via the potentiometer I_{max}.

HV Modules without this OPTION deliver IO max.

The absolute value of the hardware current limit will compute by following:

$$\text{Current limit of the channel x (Chx)} = \text{CurrentNominal[Chx]} \cdot \text{CurrentMax}$$

The module responds after the hardware current limit has been exceeded:

The green LED on front panel is off.

Depends of the kind of module:

Hardware KILL function controlled by the bit 'KILena' of the ModuleControl word:

KILL-enable = 1: Voltage will be switched off permanently without ramp. ChannelEventStatus flag 'ECLIM' will be set.

KILL-enable = 0: Current will be reduced to the value of the actual hardware current limit. ChannelStatus flag 'isCLIM' and ChannelEventStatus flag 'ECLIM' will be set.

Software KILL function controlled by the bit 'KILena' of the ChannelControl word:

KILL-enable = 1: Voltage will be switched off permanently without ramp. ChannelEventStatus flag 'ECLIM' will be set.

KILL-enable = 0: Voltage will be switched off without ramp. If the output voltage arrives at 0 V the ramping to set voltage will be restarted automatically. ChannelStatus flag 'isCLIM' and ChannelEventStatus flag 'ECLIM' will be set.

3.5.2.19 Supply24 (module read-write access)

EDCP frame:

Access	DATA_DIR	DATA_ID	DATA_3	DATA_2	DATA_1	DATA_0
master read-	1	0x1104				
HV board write access	0	0x1104	Supply24			
Notes:						
Supply24		DATA_0 to DATA_3 [V]	R4			

An 'out of range error' (see DCP group access: General status on page 87, in chapter 3.5.2.27 ADC SamplesPerSecond SPS (module write- / read-write access)) will be generated if deviation of voltage is more than $\pm 10\%$.

3.5.2.20 Supply5 (module read-write access)

EDCP frame:

Access	DATA_DIR	DATA_ID	DATA_3	DATA_2	DATA_1	DATA_0
master read-	1	0x1105				
HV board write access	0	0x1105	Supply5			
Notes: Supply5 DATA_0 to DATA_3 [V] R4						

An 'out of range error' (see DCP group access: General status on page 87) will be generated if deviation of voltage is more than $\pm 5\%$.

3.5.2.21 BoardTemperature (module read-write access)

EDCP frame:

Access	DATA_DIR	DATA_ID	DATA_3	DATA_2	DATA_1	DATA_0
master read-	1	0x1106				
HV board write access	0	0x1106	BoardTemperature			
Notes: BoardTemperature DATA_0 to DATA_3 [°C] R4						

An 'out of range error' (see group access: General status on page 87) will be generated if the temperature is higher than +55°C.

3.5.2.22 Threshold to arm the errors detection (module write / read- write access)

EDCP frame:

Access	DATA_DIR	DATA_ID	DATA_3	DATA_2	DATA_1	DATA_0
master write access	0	0x1107	ThresholdArmErrorDetection			
master read-	1	0x1107				
HV board write access	0	0x1107	ThresholdArmErrorDetection			
Notes: ThresholdArmErrorDetection DATA_0 to DATA_3 [%] R4						

Factory setting for different kinds of HV modules is between 1V and to VO max/10 in percent to the nominal voltage of the channel.

The arming of the error detection is started while the actual voltage exceeds these value which has been stored before.

Exception: At the start of a ramp from zero the firmware evaluates that the feedback control will look in. If not, because the channel has a short or the hardware current limit is near to zero, then the channel will be switched off and a current error will be generated before the actual voltage is exceeding these threshold.

3.5.2.23 Serial number (module read-write access)

EDCP frame:

Access	DATA_DIR	DATA_ID	DATA_3	DATA_2	DATA_1	DATA_0
master read-	1	0x1200				
HV board write access	0	0x1200	SerialNumber			
Notes: SerialNumber DATA_0 to DATA_3 UI4						

serial number e.g. 471212

3.5.2.24 Firmware release (module read-write access)

EDCP frame:

Access	DATA_DIR	DATA_ID	DATA_3	DATA_2	DATA_1	DATA_0
master read-	1	0x1201				
HV board write access	0	0x1201	FirmwareRelease			
Notes: FirmwareRelease DATA_0 to DATA_3 UI1[4]						

release e.g. 01.00.00.00

3.5.2.25 Bit rate (module write- / read-write access)

EDCP frame:

Access	DATA_DIR	DATA_ID	DATA_1	DATA_0
master read-	1	0x1202		
HV board write access	0	0x1202	BitRate	
Notes: BitRate DATA_0 to DATA_1 [kbit/s] UI2				

Following bit rates are possible: 20, 50, 100, 125, 250 kbit/s

The new bit rate gets active after RESET or POWER OFF/ON. The bit rate of all modules in the system must be the same before a RESET or POWER/ON is made.

- The bit rate is set to 250 kbit/s ex works.
- Invalid bit rates will be ignored and the bit 'Input error' of the will be set.
- A correct write access storing the information permanently if a NMT stop has been sent before.

3.5.2.26 Firmware Name (module read-write access)

EDCP frame:

Access	DATA_DIR	DATA_ID	DATA_4/5	DATA_3	DATA_2	DATA_1	DATA_0
master write access	0	0x1203	NameOfFirmware				
master read-	1	0x1203					
HV board write access	0	0x1203	NameOfFirmware				
Notes:							
NameOfFirmware		DATA_0 to DATA_3 [ASCII]		BSTR			

BSTR	Description
"E16D0"	EDS 16 channel per board, distributor module, range of Vmax from VO max to (VO max - 1kV)
"E16D1"	EDS 16 channel per board, distributor module
"E08C0"	EHS 8 channel per board, common GND module
"E08F0"	EHS 8 channel per board, floating GND module
"E08F2"	EHS 8 channel per board, floating GND module, two current measurement ranges
"E08F7"	EHS STACK 8 channel per board, cascaded floating GND channels
"E08C2"	EHS 8 channel per board, common floating GND module, two current measurement ranges
"E16C1"	EHS 16 channel per board or 32 channels per module, common GND module
"E24C1"	EHS FLEX 24 channel per board or 48 channels per module, common GND module
"E24D1"	EDS 24 channel per board, distributor module
"E24D3"	EDS 24 channel per board, distributor module
"E04B0"	EBS 4 channel per board, bipolar distributor module
"E08B0"	EBS 8 channel per board, bipolar distributor module
"E12B0"	EBS 12 channel per board, bipolar distributor module
"N06C2"	NHS NIM 6 channel module, common GND module, two current measurement ranges
"N04C2"	NHR NIM 4 channel module, common GND module, two current measurement ranges, reversible voltages (currents), polarity is switchable
"MICC"	MICC Multi channel Interface Crate Controller is a remote control interface for MMC Crates
"MICP"	MICP Multi channel Interface Crate PHQ Controller is a remote control interface for MMC Crates
"H101C0"	HPS 19", 1 channel HV Power Supply (300W, 800W)
"H101C1"	HPS 19" 1 channel HV Power Supply 1.5kW - 10kW
"H201C0"	HPS compact 1channel HV Power Supply (350W)

3.5.2.27 ADC SamplesPerSecond SPS (module write- / read-write access)

EDCP frame:

Access	DATA_DIR	DATA_ID	DATA_1	DATA_0
master write	0	0x1204	SamplesPerSecond	
Master read-	1	0x1204		
HV board write access	0	0x1204	SamplesPerSecond	
Notes: SamplesPerSecond DATA_0 to DATA_1 [SPS] UI2 (possible SPS are 500, 100, 60, 50, 25, 10 and 5)				

Adjusts the number of averages of the programmable ADC filter of the HV modules. Possible values are 500, 100, 60 and 50 SPS. Notch should be set with 60 SPS using a 110V line with 60Hz and 50 SPS using a 230V line with 50Hz in order to improve the common-mode rejection of these frequencies. However a SPS value of the ADC will increase the main loop time by $4 \cdot 1/\text{SPS}$ for devices "E08F0", "E08F2" (see page 86 chapter 3.5.2.26 Firmware Name (module read-write access)) respectively by $4 \cdot 1/\text{SPS}$ multiplied with the number of channels for device "E16D0", "E08C0" (see page 86).

Factory settings: E16D0, E08C0, E16C1, E08F0: 500 SPS
 E08F2, E08C2: 50 SPS.

3.5.2.28 DigitalFilter (module write- / read-write access)

EDCP frame:

Access	DATA_DIR	DATA_ID	DATA_1	DATA_0
master write	0	0x1205	NumberOfSteps	
master read-	1	0x1205		
HV board write access	0	0x1205	NumberOfSteps	
Notes: NumberOfSteps DATA_0 to DATA_1 [Steps] UI2 (possible steps are 1, 16, 64, 256, 512 and 1024)				

The digital filter in the firmware of the processor reduces the white noise of the analog values of channel VoltageMeasure, channel CurrentMeasure. The digital filtering gives the possibility to get a higher precision and to react fast on changes of the measured values. The filter is not used during a voltage ramp. The filter is restarted after a significant change of the signal.

Factory settings: 64

3.5.2.29 ChannelNumber (module read access)

EDCP frame:

Access	DATA_DIR	DATA_ID	DATA_3	DATA_2	DATA_1	DATA_0
master read-	1	0x1208				
HV board write access	0	0x1208	ChannelNumber			
Notes: ChannelNumber DATA_0 to DATA_3 UI4						

3.5.2.30 ArticleDescription (module read access)

EDCP frame:

Access	DATA_DIR	DATA_ID	DATA_5	DATA_4	DATA_3	DATA_2	DATA_1	DATA_0
master read-	1	0x1209						
HV board write access	0	0x1209	ArticleDescription					
Notes: ArticleDescription DATA_0 to DATA_3 UI4								

This register returns the module article description. Depending on the length of the article description, multiple CAN messages may be sent. The description is terminated by a zero character.

3.5.2.31 ModuleOption (module read access)

EDCP frame:

Access	DATA_DIR	DATA_ID	DATA_3	DATA_2	DATA_1	DATA_0
master read-	1	0x1280				
HV board write access	0	0x1280	ModuleOption			
Notes: ModuleOption DATA_0 to DATA_3 UI4						

The requested value of the module option is not valid when all bits are set to '1'!

Bit31	Bit30	Bit29	Bit28	Bit27	Bit26	Bit25	Bit24
EDCP	–	–	–	–	HVBPM	CLIM	VLIM
Bit23	Bit22	Bit21	Bit20	Bit19	Bit18	Bit17	Bit16
INHIBIT	RELAY	FRAMP	–	–	–	–	–
Bit15	Bit14	Bit13	Bit12	Bit11	Bit10	Bit09	Bit08
–	–	–	–	–	–	–	–
Bit07	Bit06	Bit05	Bit04	Bit03	Bit02	Bit01	Bit00
–	–	–	–	–	–	–	–

BIT	OPTION	DESCRIPTION /SPECIFICATION
Bit26	HVBM	HV boards per (CAN nodes) module
Bit25	CLIM	hardware current limit
Bit24	VLIM	hardware voltage limit
Bit23	INHIB	external INHIBIT signals
Bit22	RELY	discharge relay
Bit21	FRMP	fast ramp

3.5.2.32 ModuleOptionSpec (module read access)

EDCP frame:

Access	DATA_DIR	DATA_ID	DATA_4	DATA_3	DATA_2	DATA_1	DATA_0
master read-	1	0x1290	DATA_4	DATA_3	DATA_2	DATA_1	
HV board write access	0	0x1290	ModuleOption				Spec
Notes:							
ModuleOption	DATA_1 to DATA_4		UI4				
Specification	DATA_0		UI1				

The requested value of the module option specification is not valid or do not exist when all bits are set to '1' or '0'!

Bit31	Bit30	Bit29	Bit28	Bit27	Bit26	Bit25	Bit24
Enhanced Device Control Protocol	-	-	-	-	HV boards per (CAN nodes) module	Current limit	Voltage limit
Bit23	Bit22	Bit21	Bit20	Bit19	Bit18	Bit17	Bit16
INHIBIT	RELAY	Fast RAMP	-	-	-	-	-
Bit15	Bit14	Bit13	Bit12	Bit11	Bit10	Bit09	Bit08
-	-	-	-	-	-	-	-
Bit07	Bit06	Bit05	Bit04	Bit03	Bit02	Bit01	Bit00
-	-	-	-	-	-	-	-

To request a specification the corresponding bit of the module option word has to be set to '1'.

Specification:	fast ramp	1	25% of VoltageNominal
		2	50% of VoltageNominal
		3	75% of VoltageNominal

3.5.2.33 ModuleCommMode (module write access)

EDCP frame:

Access	DATA_DIR	DATA_ID	DATA_1	DATA_0
HV board write access	0	0x12a0	ModuleCommMode	
Notes:				
ModuleOption		DATA_0 to DATA_3	UI2	

Bit31	Bit30	Bit29	Bit28	Bit27	Bit26	Bit25	Bit24
Reserved	Reserved	Reserved	Reserved	Reserved	Reserved	Reserved	Reserved
Bit23	Bit22	Bit21	Bit20	Bit19	Bit18	Bit17	Bit16
Reserved	Reserved	Reserved	Reserved	Reserved	Reserved	Reserved	Reserved
Bit15	Bit14	Bit13	Bit12	Bit11	Bit10	Bit09	Bit08
–	–	–	–	–	–	–	–
Bit07	Bit06	Bit05	Bit04	Bit03	Bit02	Bit01	Bit00
–	–	–	–	–	–	–	FAST

Bit	Level	Description
Bit0	FAST	1
		0
		common mode

3.5.3 EDCP Group Accesses

The Multi Channel CAN module offers an extended and flexible range of group functions. There exist both predefined (so called fix) groups and variable groups.

Each group definition consists of 2 words each of 16 bits. In fix groups these 2 words are the value to be set into all channels (in float format) or they are a logical information. In variable groups one word carries the information about type and characteristics of the group, the other word carries the information about the members of the group or gives an overview about a selected situation in all channels.

Four different group types for variable groups have been established:

- Set group
- Status group
- Monitoring group
- Trip group

3.5.3.1 SetGroup

Set groups will be used in order to set channels to a same value, which happen to carry the identical channel value. Therefore within the group following will be defined:

- Member of the group: Each member will be activated in the channel setting list Channel Setting List.
- Type of the group: Set group type Type Set.
- Channel characteristics: Coding of characteristics, which have to be set commonly.
- Control mode: Divides between a one-time setting of the slave channel property and a permanently copying of the Master channel's property to the slave channels.
- Master channel: Number of the channel, which characteristics will be transferred to the other channels. Is just necessary for Set groups which set a value.
If functions have to be initialized e.g. start of ramp then there is no Master channel.

EDCP frame:

Access	DATA_DIR	DATA_ID	NBR	OFFSET	DATA_3	DATA_2	DATA_1	DATA_0
master group write	0	0x2000	Nx	Ox	ChannelSettingList		Type Set	
master group read-	1	0x2000	Nx	Ox				
HV board write access	0	0x2000	Nx	Ox	ChannelSettingList		TypeSet	
Notes:								
Nx	Group number			0 ... 31				
Ox	Channel member offset			0, 16, 32 ... too access up to 255 channels				
ChSetLst	DATA_2 to DATA_3 Channel Setting List			members 0x1 ... 0xffff		UI2		
TypeSet	DATA_0 to DATA_1 Type Set					UI2		

ChannelSettingList:

Bit31	Bit30	Bit29	Bit28	Bit27	Bit26	Bit25	Bit24
Reserved	Reserved	Reserved	Reserved	Reserved	Reserved	Reserved	Reserved
Bit23	Bit22	Bit21	Bit20	Bit19	Bit18	Bit17	Bit16
Reserved	Reserved	Reserved	Reserved	Reserved	Reserved	Reserved	Reserved
Bit15	Bit14	Bit13	Bit12	Bit11	Bit10	Bit09	Bit08
CH15	CH14	CH13	CH12	CH11	CH10	CH9	CH8
Bit07	Bit06	Bit05	Bit04	Bit03	Bit02	Bit01	Bit00
CH7	CH6	CH5	CH4	CH3	CH2	CH1	CH0

Bit15	Bit14	Bit13	Bit12	Bit11	Bit10	Bit09	Bit08
TYPE1	TYPE0	res	res	res	res	res	MOD0
Bit07	Bit06	Bit05	Bit04	Bit03	Bit02	Bit01	Bit00
SET3	SET2	SET1	SET0	MCH3	MCH2	MCH1	MCH0

TYPE1	TYPE0	Value	
0	0	SetGroupType	Group is defined as Set group

MOD0	Value	
0	0	The group function is done one time
1	1	The group function is done permanently

SET3	SET2	SET1	SET0	Value	
0	0	0	1	SetVset	Copy Vset from MCH to all members
0	0	1	0	SetIset	Copy Iset from MCH to all members
0	1	0	0	SetVbnds	Copy Vbounds from MCH to all members
0	1	0	1	SetIbnds	Copy Ibounds from MCH to all members
1	0	1	0	SetOn	Switch ON/OFF all members depending on setON in MCH
1	0	1	1	SetEmrgCutOff	Switch OFF all members (Emergency OFF)
1	1	1	1	Cloning	Set all properties of members like MCH properties (in preparation)

MCH3	MCH2	MCH1	MCH0	Value	
0	0	0	0	0	1: Channel 0 is MasterChannel MCH
0	0	0	1	1	1: Channel 1 is MasterChannel MCH
...
1	1	1	1	15	1: Channel 15 ist MasterChannel MCH

3.5.3.2 StatusGroup

Status groups are used to report the status of a single characteristic of all channels simultaneously. No action is foreseen. Therefore within the group following has to be defined:

- Members of the group: Each member will be activated in the channel status list ChStatLst.
- Type of the group: Status group type TypeStat
- Channel characteristics: Coding of characteristics which is to be reported.

EDCP frame:

Access	DATA_DIR	DATA_ID	NBR	OFFSET	DATA_3	DATA_2	DATA_1	DATA_0
master group write	0	0x2000	Nx	Ox	ChannelStatusList		TypeStatus	
master group read-	1	0x2000	Nx	Ox				
HV board write access	0	0x2000	Nx	Ox	ChannelStatusList		TypeStatus	
Notes:								
Nx	Group number			0 ... 31				
Ox	Channel member offset			0, 16, 32 ... too access up to 255 channels				
ChStatLst	DATA_2 to DATA_3 ChannelStatusList			members 0x1 ... 0xffff		UI2		
TypeStat	DATA_0 to DATA_1 TypeStatus			UI2				

ChannelStatusList:

Bit31	Bit30	Bit29	Bit28	Bit27	Bit26	Bit25	Bit24
Reserved	Reserved	Reserved	Reserved	Reserved	Reserved	Reserved	Reserved
Bit23	Bit22	Bit21	Bit20	Bit19	Bit18	Bit17	Bit16
Reserved	Reserved	Reserved	Reserved	Reserved	Reserved	Reserved	Reserved
Bit15	Bit14	Bit13	Bit12	Bit11	Bit10	Bit09	Bit08
CH15	CH14	CH13	CH12	CHST11	CHST10	CHST9	CHST8
Bit07	Bit06	Bit05	Bit04	Bit03	Bit02	Bit01	Bit00
CHST7	CHST6	CHST5	CHST4	CHST3	CHST2	CHST1	CHST0

TypeStatus:

Bit15	Bit14	Bit13	Bit12	Bit11	Bit10	Bit09	Bit08
TYPE1	TYPE0	Reserved	Reserved	Reserved	Reserved	Reserved	Reserved
Bit07	Bit06	Bit05	Bit04	Bit03	Bit02	Bit01	Bit00
STAT3	STAT2	STAT1	STAT0	Reserved	Reserved	Reserved	Reserved

TYPE1	TYPE0	Value
0	1	StatusGroupType Group will be defined as Status group

SET3	SET2	SET1	SET0	Value
0	0	1	1	ChkIsOn check channel Status.isON (is on)
0	1	0	0	ChkIsRamping check channel Status.isRAMP (is ramping)
0	1	1	0	ChkIsControlledCurrent check channel Status.isCC (is current control)
0	1	1	1	ChkIsControlledVoltage check channel Status.isCV (is voltage control)
1	0	1	0	ChkIsCurrentBounds check channel Status.isCBNDs (is current bounds)
1	0	1	1	ChkIsVoltageBounds check channel Status.isVBNDs (is voltage bounds)
1	1	0	0	ChkIsExternalInhibit check channel Status.isEINH (is external inhibit)
1	1	0	1	ChkIsTrip check channel Status.isTRIP(is trip)
1	1	1	0	ChkIsCurrentLimit check channel Status.isCLIM (is current limit exceeded)
1	1	1	1	ChkIsVoltageLimit check channel Status.isVLIM (is voltage limit exceeded)

3.5.3.3 MonitoringGroup

Monitoring groups are used to observe a single characteristic of selected channels simultaneously and in case of need take action. Therefore the group has to be defined:

- Members of the group: Each member will be activated in the channel monitoring list ChMonLst.
- Type of the group: Monitoring group type TypeMon
- Channel characteristics: Coding of characteristics which is to be monitored.
- Control mode: Coding of the control function, i.e. which kind of change in the group-image shall cause a signal.
- Activity: Define which activity has to happen after the event.

EDCP frame:

Access	DATA_DIR	DATA_ID	NBR	OFFSET	DATA_3	DATA_2	DATA_1	DATA_0
master group write	0	0x2000	Nx	Ox	ChannelMonitoringList	TypeMonitoring		
master group read-	1	0x2000	Nx	Ox				
HV board write access	0	0x2000	Nx	Ox	ChannelMonitoringList	TypeMonitoring		
Notes:								
Nx	Group number			0 ... 31				
Ox	Channel member offset			0, 16, 32 ... too access up to 255 channels				
ChMonLst	DATA_2 to DATA_3 ChannelMonitoringList			members 0x1 ... 0xffff		UI2		
TypeMon	DATA_0 to DATA_1 TypeMonitoring			UI2				

ChannelMonitoringList:

Bit31	Bit30	Bit29	Bit28	Bit27	Bit26	Bit25	Bit24
Reserved	Reserved	Reserved	Reserved	Reserved	Reserved	Reserved	Reserved
Bit23	Bit22	Bit21	Bit20	Bit19	Bit18	Bit17	Bit16
Reserved	Reserved	Reserved	Reserved	Reserved	Reserved	Reserved	Reserved
Bit15	Bit14	Bit13	Bit12	Bit11	Bit10	Bit09	Bit08
CH15	CH14	CH13	CH12	CH11	CH10	CH9	CH8
Bit07	Bit06	Bit05	Bit04	Bit03	Bit02	Bit01	Bit00
CH7	CH6	CH5	CH4	CH3	CH2	CH1	CH0

TypeMonitoring:

Bit15	Bit14	Bit13	Bit12	Bit11	Bit10	Bit09	Bit08
TYPE1	TYPE0	ACT1	ACT0	res	res	res	MOD0
Bit07	Bit06	Bit05	Bit04	Bit03	Bit02	Bit01	Bit00
MON3	MON2	MON1	MON0	Reserved	Reserved	Reserved	Reserved

TYPE1	TYPE0	Value	Description
1	0	MonitoringGroupType	Group will be defined as Monitoring group

ACT1	ACT0	Value	Description
0	0	0	No special action ; EventGroupStatus[grp] will be set
0	1	1	Ramp down of group EventGroupStatus[grp] will be set
1	0	2	Shut down group without ramp; EventGroupStatus[grp] will be set
1	1	3	Shut down module without ramp; EventGroupStatus[grp] will be set

MOD0	Value	Description
0	0	event will happen if at least one Channel == 0
1	1	event will happen if at least one Channel == 1

MON3	MON2	MON1	MON0	Value	Description
0	0	1	1	MonitorIsOn	monitor channel Status.isON (is on)
0	1	0	0	MonitorIsRamping	monitor channel Status.isRAMP (is ramping)
0	1	1	0	MonitorIsControlledCurrent	monitor channel Status.isCC (is Constant Current)
0	1	1	1	MonitorIsControlledVoltage	monitor channel Status.isCV (is Constant Voltage)
1	0	1	0	MonitorIsCurrentBounds	monitor channel Status.isCBNDs (is Current Bounds)
1	0	1	1	MonitorIsVoltageBounds	monitor channel Status.isVBNDs (is Voltage Bounds)
1	1	0	0	MonitorIsExternalInhibit	monitor channel Status.isEINH (is External Inhibit)
1	1	0	1	MonitorIsTrip	monitor channel Status.isTRIP (is Trip)
1	1	1	0	MonitorIsCurrentLimit	monitor channel Status.isCLIM (is Current Limit exceeded.)
1	1	1	1	MonitorIsVoltageLimit	monitor channel Status.isVLIM (is Voltage Limit exceeded.)

3.5.3.4 DelayedTripGroup

Trip timeout groups are necessary to keep the timing for the time controlled delayed Trip function and to define the action which has to happen after a Trip.

Therefore in the group following will be defined:

- Members of the group: Each member will be activated in a word channel trip timeout list ChTrpTotLst.
- Type of the group: Time out group type TypeTime
- Activity: Define which activity has to happen after time controlled Trip
- Timeout: Coding of Timeout-time as integer value.

Timeout groups have to stay unchanged for the whole time as long they are used.

An overwriting will cause the definition of a new group. An overlay of the channels of multiple Trip groups is not allowed.

EDCP frame:

Access	DATA_DIR	DATA_ID	NBR	OFFSET	DATA_3	DATA_2	DATA_1	DATA_0
master group write	0	0x2000	Nx	Ox	ChannelTripTimeoutList	TypeTripTime		
master group read-	1	0x2000	Nx	Ox				
HV board write access	0	0x2000	Nx	Ox	ChannelTripTimeoutList	TypeTripTime		
Notes:								
Nx	Group number			0 ... 31				
Ox	Channel member offset			0, 16, 32 ... too access up to 255 channels				
ChTrpTotLst	DATA_2 to DATA_3 ChannelTripTimeoutList			members 0x1 ... 0xffff		UI2		
TypeTime	DATA_0 to DATA_1 TypeTimeOut			UI2				

ChannelTripTimeoutList:

Bit31	Bit30	Bit29	Bit28	Bit27	Bit26	Bit25	Bit24
Reserved	Reserved	Reserved	Reserved	Reserved	Reserved	Reserved	Reserved
Bit23	Bit22	Bit21	Bit20	Bit19	Bit18	Bit17	Bit16
Reserved	Reserved	Reserved	Reserved	Reserved	Reserved	Reserved	Reserved
Bit15	Bit14	Bit13	Bit12	Bit11	Bit10	Bit09	Bit08
CH15	CH14	CH13	CH12	CH11	CH10	CH9	CH8
Bit07	Bit06	Bit05	Bit04	Bit03	Bit02	Bit01	Bit00
CH7	CH6	CH5	CH4	CH3	CH2	CH1	CH0

TypeTripTime:

Bit15	Bit14	Bit13	Bit12	Bit11	Bit10	Bit09	Bit08
TYPE1	TYPE0	ACT1	ACT0	TOT11	TOT10	TOT9	TOT8
Bit07	Bit06	Bit05	Bit04	Bit03	Bit02	Bit01	Bit00
TOT7	TOT6	TOT5	TOT4	TOT3	TOT2	TOT1	TOT0

TYPE1	TYPE0	Value	
1	1	TimeOutGroupType	Group will be defined as Timeout group

ACT1	ACT0	Action	
0	0	0	No special action; EventGroupStatus[grp] will be set.
0	1	1	Ramp down group with ramp; EventGroupStatus[grp] will be set
1	0	2	Shut down the group without ramp; EventGroupStatus[grp] will be set
1	1	3	Shut down the module without ramp; EventGroupStatus[grp] will be set

INFORMATION



INFORMATION

TOT[11 ... 0]:
Timeout-time in ms (8 ... 4088 ms) resolution is 8 ms (different values to 8 ms resolution will be rounded)

Set voltage of all channels (group write access)

EDCP frame:

Access	DATA_DIR	DATA_ID	DATA_3	DATA_2	DATA_1	DATA_0
master write access	0	0x2100	VoltageSetAllChannels			
Notes:						
VoltageSetAllChannels	DATA_0 to DATA_3 [V]		R4			

(see 3.5.1.13 Set voltage (single write- and single/ multiple single read-write access) Single access also)

3.5.3.5 Request Temperatures and Supplies (group write access)

Message	DLC	DataID	Channel	Data	Data	Data	Data	Value
Request all Temperatures	2	20 01						
Temperature 0	7	20 01	00	41	EF	0D	B0	29.9 °C
Temperature 1	7	20 01	01	41	ED	66	30	29.7 °C
Temperature 2	7	20 01	02	41	EF	0D	B0	29.9 °C
Request all Measured Supplies	2	20 02						
Positive supply external +24	7	20 02	00	41	BE	75	98	23,8 V
Negative supply external -24	7	20 02	01	C1	C0	00	00	-24 V
Logic supply external +5	7	20 02	02	40	A0	51	EC	5,01 V
Positive supply op-amp	7	20 02	03	41	40	00	00	12
Negative supply op-amp	7	20 02	04	C1	40	00	00	-12
Logic intern +5	7	20 02	05	40	A0	51	EC	4.99 V
Ligic intern +3.3	7	20 02	06	40	53	2E	1C	3.29 V
Reserved	7	20 02	07	00	00	00	00	0 (res)
Reserved	7	20 02	08	00	00	00	00	0 (res)

3.5.3.6 GroupVoltageLimit – OPTION (module read-write access)

EDCP frame:

Access	DATA_DIR	DATA_ID	DATA_4	DATA_3	DATA_2	DATA_1	DATA_0
master read -	1	0x2005					
HV board write access	0	0x2005	Channel	VoltageMax			
Notes: HardwareVoltageLimit DATA_0 to DATA_3 [%] R4 VoltageMax Channel							

3.5.3.7 GroupCurrentLimit – OPTION (module read-write access)

EDCP frame:

Access	DATA_DIR	DATA_ID	DATA_4	DATA_3	DATA_2	DATA_1	DATA_0
master read -	1	0x2006					
HV board write access	0	0x2006	Channel	CurrentMax			
Notes: HardwareVoltageLimit DATA_0 to DATA_3 [%] R4 CurrentMax Channel							

3.5.3.8 VoltageSetAllChannels (group write access)

EDCP frame:

Access	DATA_DIR	DATA_ID	DATA_3	DATA_2	DATA_1	DATA_0
master write access	0	0x2101	VoltageSetAllChannels			
Notes: VoltageSetAllChannels DATA_0 to DATA_3 [A] R4						

(see 3.5.1.14 Set current / trip (single write- and single/ multiple single read-write access) Single access also)

3.5.3.9 Current-Trip/Set-AllChannels (group write access)

EDCP frame:

Access	DATA_DIR	DATA_ID	DATA_3	DATA_2	DATA_1	DATA_0
master write access	0	0x2101	CurrentSetAllChannels			
Notes: CurrentSetAllChannels DATA_0 to DATA_3 [A] R4						

(see 3.5.1.14 Set current / trip (single write- and single/ multiple single read-write access) Single access also)

3.5.3.10 SetOnOffAllChannels (group write- / read-write access)

EDCP frame:

Access	DATA_DIR	DATA_ID	DATA_3	DATA_2	DATA_1	DATA_0
master group write	0	0x2200	SetOnOffAllChs			
master group read-	1	0x2200				
HV board write access	0	0x2200	SetOnOffAllChs			
Notes:						
SetOnOffAllChs	DATA_0 to DATA_3 for channel 0 to 31 (channel 16 to 31 are reserved at the moment)					UI4
SetOnOffAllChs	DATA_2 to DATA_3 for channel 16 to channel 31 (reserved at the moment)					UI2

Bit31	Bit30	Bit29	Bit28	Bit27	Bit26	Bit25	Bit24
CH31	CH30	CH29	CH28	CH27	CH26	CH25	CH24
Bit23	Bit22	Bit21	Bit20	Bit19	Bit18	Bit17	Bit16
CH23	CH22	CH21	CH20	CH19	CH18	CH17	CH16
Bit15	Bit14	Bit13	Bit12	Bit11	Bit10	Bit09	Bit08
CH15	CH14	CH13	CH12	CH11	CH10	CH9	CH8
Bit07	Bit06	Bit05	Bit04	Bit03	Bit02	Bit01	Bit00
CH7	CH6	CH5	CH4	CH3	CH2	CH1	CH0

SetOnOffAllChs DATA_0 to DATA_1 for channel 0 to channel 15 UI2

CHm = 1 Channel ON

CHm = 0 Channel OFF

The SetOnOffAllChs represents a 32 bit field to control the channel property setON for each channel member of the bit field with one bit in the bit-field. The data point is one of the EDCP group functions with advantage to setON for all channel members simultaneously with on instruction.

3.5.3.11 SetEmergencyAllChannels (group write- / read-write access)

EDCP frame:

Access	DATA_DIR	DATA_ID	DATA_3	DATA_2	DATA_1	DATA_0
master group write	0	0x2201	SetEmergencyAllChs			
master group read-	1	0x2201				
HV board write access	0	0x2201	SetEmergencyAllChs			
Notes:						
SetEmergencyAllChs	DATA_0 to DATA_3 for channel 0 to 31 (channel 16 to 31 are reserved at the moment)					UI4
SetEmergencyAllChs	DATA_2 to DATA_3 for channel 16 to channel 31 (reserved at the moment)					UI2

Bit31	Bit30	Bit29	Bit28	Bit27	Bit26	Bit25	Bit24
CH31	CH30	CH29	CH28	CH27	CH26	CH25	CH24
Bit23	Bit22	Bit21	Bit20	Bit19	Bit18	Bit17	Bit16
CH23	CH22	CH21	CH20	CH19	CH18	CH17	CH16
Bit15	Bit14	Bit13	Bit12	Bit11	Bit10	Bit09	Bit08
CH15	CH14	CH13	CH12	CH11	CH10	CH9	CH8
Bit07	Bit06	Bit05	Bit04	Bit03	Bit02	Bit01	Bit00
CH7	CH6	CH5	CH4	CH3	CH2	CH1	CH0

SetEmergencyAllChs DATA_0 to DATA_1 for channel 0 to channel 15 UI2

CHm = 1 Channel EMERGENCY set

CHm = 0 Channel EMERGENCY reset

The 'SetEmergencyAllChs' represents a 32 bit field to control the channel property 'setEMCY' for each channel member of the bit field with one bit in the bit-field. The data point is one of the EDCP group functions with advantage to 'setEMCY' for all channel members simultaneously with one instruction.

3.5.3.12 EventStatusVoltageLimitAllChannels (group write- / read-write access)

EDCP frame:

Access	DATA_DIR	DATA_ID	DATA_3	DATA_2	DATA_1	DATA_0
master group write	0	0x2202	EventStatusVLimitAllChs			
master group read-	1	0x2202				
HV board write access	0	0x2202	EventStatusVLimitAllChs			
Notes:						
EventStatusVLimitAllChs	DATA_0 to DATA_3 for channel 0 to 31 (channel 16 to 31 are reserved at the moment)					UI4
EventStatusVLimitAllChs	DATA_2 to DATA_3 for channel 16 to channel 31 (reserved at the moment)					UI2

Bit31	Bit30	Bit29	Bit28	Bit27	Bit26	Bit25	Bit24
CH31	CH30	CH29	CH28	CH27	CH26	CH25	CH24
Bit23	Bit22	Bit21	Bit20	Bit19	Bit18	Bit17	Bit16
CH23	CH22	CH21	CH20	CH19	CH18	CH17	CH16
Bit15	Bit14	Bit13	Bit12	Bit11	Bit10	Bit09	Bit08
CH15	CH14	CH13	CH12	CH11	CH10	CH9	CH8
Bit07	Bit06	Bit05	Bit04	Bit03	Bit02	Bit01	Bit00
CH7	CH6	CH5	CH4	CH3	CH2	CH1	CH0

EventStatusVLimitAllChs DATA_0 to DATA_1 for channel 0 to channel 15 UI2

CHm = 1 Channel event status voltage limit

CHm = 0 nothing

The 'EventStatusVLimitAllChs' represents a 32 bit field to control the channel property 'EVLIM' for each channel with one bit in the bit-field. The data point is one of the EDCP group functions with advantage to reset 'EVLIM' for all channel members simultaneously with one instruction.

If the voltage limit was exceeded or an external over voltage occurs at the channel output (i.e. Output voltage → Set voltage) then the channel will be switched off and the according bit will be set. The error bits will be canceled and the voltage of the corresponding channel can be switched on again only after writing 'EventStatusVLimitAllChs' with the bits, which are corresponding to the channel errors are set to "1".

3.5.3.13 EventStatusCurrentLimitAllChannels (group write- / read-write access)

EDCP frame:

Access	DATA_DIR	DATA_ID	DATA_3	DATA_2	DATA_1	DATA_0
master group write	0	0x2203	EventStatusCLimitAllChs			
master group read-	1	0x2203				
HV board write access	0	0x2203	EventStatusCLimitAllChs			
Notes:						
EventStatusCLimitAllChs	DATA_0 to DATA_3 for channel 0 to 31 (channel 16 to 31 are reserved at the moment)					UI4
EventStatusCLimitAllChs	DATA_2 to DATA_3 for channel 16 to channel 31 (reserved at the moment)					UI2

Bit31	Bit30	Bit29	Bit28	Bit27	Bit26	Bit25	Bit24
CH31	CH30	CH29	CH28	CH27	CH26	CH25	CH24
Bit23	Bit22	Bit21	Bit20	Bit19	Bit18	Bit17	Bit16
CH23	CH22	CH21	CH20	CH19	CH18	CH17	CH16
Bit15	Bit14	Bit13	Bit12	Bit11	Bit10	Bit09	Bit08
CH15	CH14	CH13	CH12	CH11	CH10	CH9	CH8
Bit07	Bit06	Bit05	Bit04	Bit03	Bit02	Bit01	Bit00
CH7	CH6	CH5	CH4	CH3	CH2	CH1	CH0

EventStatusCLimitAllChs DATA_0 to DATA_1 for channel 0 to channel 15 UI2

CHm = 1 Channel event status current limit

CHm = 0 nothing

The EventStatusCLimitAllChs represents a 32 bit field to control the channel property ECLIM for each channel with one bit in the bit-field. The data point is one of the EDCP group functions with advantage to reset ECLIM for all channel members simultaneously with one instruction.

The module responds to the exceeding of the hardware current limit which has been set in the channel in dependence on the according setKILena bit of module control as follows:

- setKILena = 1: Voltage will be switched off permanently without ramp, green LED on front panel is off until a write of 'EventStatusCLimitAllChs' with the bits, which are corresponding to the channel errors set to "1". The error bits will be cancelled and the voltage of the corresponding channels can be switched on again.
- setKILena = 0: HV modules without a current control E16D0, E16D1 and E08B0 will be switched off voltage without ramp, green LED on front panel is off. If the output voltage arrives at 0 V the ramping to set voltage will be started automatically again. The green LED again flash only after writing the 'EventStatusCLimitAllChs' with the respective bits.

HV modules with a current control will not switch off high voltage and operate in constant current mode, green LED on front panel is off. The output current will be limited. The green LED flashes only after writing of EventStatusCLimitAllChs with the respective bits and removing of the limitation of current before.

3.5.3.14 EventStatusCurrentTripAllChannels (group write- / read-write access)

EDCP frame:

Access	DATA_DIR	DATA_ID	DATA_3	DATA_2	DATA_1	DATA_0
master group write	0	0x2204	EventStatusTrpAllChs			
master group read-	1	0x2204				
HV board write access	0	0x2204	EventStatusTrpAllChs			
Notes:						
EventStatusTrpAllChs	DATA_0 to DATA_3 for channel 0 to 31 (channel 16 to 31 are reserved at the moment)					UI4
EventStatusTrpAllChs	DATA_2 to DATA_3 for channel 16 to channel 31 (reserved at the moment)					UI2

Bit31	Bit30	Bit29	Bit28	Bit27	Bit26	Bit25	Bit24
CH31	CH30	CH29	CH28	CH27	CH26	CH25	CH24
Bit23	Bit22	Bit21	Bit20	Bit19	Bit18	Bit17	Bit16
CH23	CH22	CH21	CH20	CH19	CH18	CH17	CH16
Bit15	Bit14	Bit13	Bit12	Bit11	Bit10	Bit09	Bit08
CH15	CH14	CH13	CH12	CH11	CH10	CH9	CH8
Bit07	Bit06	Bit05	Bit04	Bit03	Bit02	Bit01	Bit00
CH7	CH6	CH5	CH4	CH3	CH2	CH1	CH0

EventStatusTrpAllChs DATA_0 to DATA_1 for channel 0 to channel 15 UI2

CHm = 1 Channel event status trip

CHm = 0 nothing

The 'EventStatusTrpAllChs' represents a 32 bit field to control the channel property ETRP for each channel with one bit in the bit-field. The data point is one of the EDCP group functions with advantage to reset ETRP for all channel members simultaneously with one instruction.

If the output current exceeds the programmed current trip value then the corresponding bits will be set:

setKILena = 1: Voltage will be switched off permanently without ramp, green LED on front panel is off until a write of 'EventStatusTrpAllChs' with the bits, which are corresponding to the channel errors set to "1". The error bits will be cancelled and the voltage of the corresponding channels can be switched on again.

setKILena = 0: HV will not be switched but the green LED on front panel is off. The output current will be limited if there is a current control. The green LED flashes only after writing of 'EventStatusTrpAllChs' with the respective bits and removing of the limitation of current before.

3.5.3.15 EventStatusExternalInhibitAllChannels (group write- / read-write access)

EDCP frame:

Access	DATA_DIR	DATA_ID	DATA_3	DATA_2	DATA_1	DATA_0
master group write	0	0x2205	EventStatusInhAllChs			
master group read-	1	0x2205				
HV board write access	0	0x2205	EventStatusInhAllChs			
Notes:						
EventStatusInhAllChs	DATA_0 to DATA_3 for channel 0 to 31 (channel 16 to 31 are reserved at the moment)					UI4
EventStatusInhAllChs	DATA_2 to DATA_3 for channel 16 to channel 31 (reserved at the moment)					UI2

Bit31	Bit30	Bit29	Bit28	Bit27	Bit26	Bit25	Bit24
CH31	CH30	CH29	CH28	CH27	CH26	CH25	CH24
Bit23	Bit22	Bit21	Bit20	Bit19	Bit18	Bit17	Bit16
CH23	CH22	CH21	CH20	CH19	CH18	CH17	CH16
Bit15	Bit14	Bit13	Bit12	Bit11	Bit10	Bit09	Bit08
CH15	CH14	CH13	CH12	CH11	CH10	CH9	CH8
Bit07	Bit06	Bit05	Bit04	Bit03	Bit02	Bit01	Bit00
CH7	CH6	CH5	CH4	CH3	CH2	CH1	CH0

EventStatusInhAllChs DATA_0 to DATA_1 for channel 0 to channel 15 UI2

CHm = 1 Channel event status inhibit

CHm = 0 nothing

The 'EventStatusInhAllChs' represents a 32 bit field to control the channel property ETRP for each channel with one bit in the bit-field. The data point is one of the EDCP group functions with advantage to reset ETRP for all channel members simultaneously with one instruction.

Voltage will be switched off permanently without ramp, if the INHIBIT is active, the green LED on front panel is off. When the INHIBIT is going back from active to passive state then the INHIBIT flag have to be erased by write of the 'EventStatusInhAllChs' before the voltage can be switched on again. The INHIBIT flags are reset with set of the corresponding channel bit to "1".

3.5.3.16 Set ON / OFF channels extender (group write- / read-write access)

EDCP frame:

Access	DATA_DIR	DATA_ID	DATA_3	DATA_2	DATA_1	DATA_0
master group write	0	0x2280	SetOnOffChsExtender			
master group read-	1	0x2280				
HV board write access	0	0x2280	SetOnOffChsExtender			
Notes:						
SetOnOffAllChs	DATA_0 to DATA_3 for channel 0 to 31 (channel 16 to 31 are reserved at the moment)					UI4
SetOnOffAllChs	DATA_2 to DATA_3 for channel 16 to channel 31 (reserved at the moment)					UI2

Bit31	Bit30	Bit29	Bit28	Bit27	Bit26	Bit25	Bit24
CH63	CH62	CH61	CH60	CH59	CH58	CH57	CH56
Bit23	Bit22	Bit21	Bit20	Bit19	Bit18	Bit17	Bit16
CH55	CH54	CH53	CH52	CH51	CH50	CH49	CH48
Bit15	Bit14	Bit13	Bit12	Bit11	Bit10	Bit09	Bit08
CH47	CH46	CH45	CH44	CH43	CH42	CH41	CH40
Bit07	Bit06	Bit05	Bit04	Bit03	Bit02	Bit01	Bit00
CH39	CH38	CH37	CH36	CH36	CH34	CH33	CH32

SetOnOffAllChs DATA_0 to DATA_1 for channel 0 to channel 15 UI2

CHm = 1 Channel ON

CHm = 0 Channel OFF

The 'SetOnOffChsExtender' represents a 32 bit field to control the channel property 'setON' for each channel member of the bit field with one bit in the bit-field. The data point is one of the EDCP group functions with advantage to 'setON' for all channel members simultaneously with on instruction.

3.5.3.17 Set EMERGENCY channels extender (group write- / read-write access)

EDCP frame:

Access	DATA_DIR	DATA_ID	DATA_3	DATA_2	DATA_1	DATA_0
master group write	0	0x2201	SetEmergencyChsExtender			
master group read-	1	0x2201				
HV board write access	0	0x2201	SetEmergencyChsExtender			
Notes:						
SetEmergencyChsExtender	DATA_0 to DATA_3 for channel 0 to 31 (channel 16 to 31 are reserved at the moment)					UI4
SetEmergencyChsExtender	DATA_2 to DATA_3 for channel 16 to channel 31 (reserved at the moment)					UI2

Bit31	Bit30	Bit29	Bit28	Bit27	Bit26	Bit25	Bit24
CH63	CH62	CH61	CH60	CH59	CH58	CH57	CH56
Bit23	Bit22	Bit21	Bit20	Bit19	Bit18	Bit17	Bit16
CH55	CH54	CH53	CH52	CH51	CH50	CH49	CH48
Bit15	Bit14	Bit13	Bit12	Bit11	Bit10	Bit09	Bit08
CH47	CH46	CH45	CH44	CH43	CH42	CH41	CH40
Bit07	Bit06	Bit05	Bit04	Bit03	Bit02	Bit01	Bit00
CH39	CH38	CH37	CH36	CH36	CH34	CH33	CH32

SetEmergencyChsExtender DATA_0 to DATA_1 for channel 0 to channel 15 UI2

CHm = 1 Channel EMERGENCY set

CHm = 0 Channel EMERGENCY reset

The 'SetEmergencyChsExtender' represents a 32 bit field to control the channel property 'setEMCY' for each channel member of the bit field with one bit in the bit-field. The data point is one of the EDCP group functions with advantage to 'setON' for all channel members simultaneously with on instruction.

3.5.4 Important DCP Module Accesses

3.5.4.1 GeneralStatus (group write- / read-write / active access)

DCP frame:

Access	EXT_INSTR	DATA_DIR	DATA_ID	DATA_1	DATA_0
HV board active access	0	0	0xc0	GeneralStatus	Details
Notes: GeneralStatus DATA_1 UI1					

b15	b14	b13	b12	b11	b10	b9	b8
Save	KILLena/ HwVLnotLow	SPLYTMPgd	AvAd	Stbl	SFLPg	noRamp	noSumErr
b7	b6	b5	b4	b3	b2	b1	b0
INHb	BoardTemp	res	res	VLIM	CLIM	RERR	TRP

Details DATA_0 UI1

Bit	Name	Description
Save	Save	save function bit stored permanently the current set values (takes some seconds ca. 10s)
KILLena	KillEnable	kill function bit
HwVLnotLow	HardwareVoltageLimitNotLow	hardware voltage limit is not to low bit, for device class 21 only
SPLYTMPgd	SupplyGoodTemperatureGood	supply good and board temperature good bit
AvAd	AverageAdjust	average and fine adjustment bit
SFLPg	SafetyLoop	safety loop bit
noRamp	noRamp	flag to display that no voltage is ramping
noSumErr	NoSumError	displays that there has been built a sum error flag by VLIM&ILIM&TRP over all channels
INHb	Inhibit	an external INHIBIT at least one of the channels (device class 25)
BoardTemp	BoardTemperatureGood	board temperature is good
VLIM	VoltageLimit	hardware voltage limit has been exceeded
CLIM	CurrentLimit	hardware current limit has been exceeded
RERR	RegulationError	regulation error, for device class 21 only
TRP	Trip	voltage or current trip
res	reserved	

Bit	Description
Save=0	no write access to EEPROM
Save=1	store all set values to EEPROM (time to save ca. 10s) for device classes 24 and 25 only
KILLena=0	kill function disable
KILLena = 1	kill function enable, for device classes 21 only
HwVLnotLow = 0	HW Vlimit voltage limit is to low, it is not possible to switch on the HV, reset by write with HwVLToLow flag is set to "1"
HwVLnotLow = 1	HW Vlimit in proper range
SPLYTMPgd = 0	supply voltages are out of range or module temperature > 55°C
SPLYTMPgd = 1	supply voltages are in range and module temperature ≤ 55°C
AvAd = 0	fine adjustment and average of voltage, current measurement OFF
AvAd = 1	fine adjustment and average of voltage, current measurement ON
Stbl = 0	all channels are stable with program ADC filter frequency fN. (ADC conversion time =1/fN, see 'Set ADC filter frequency', default fN=50 Hz)
Stbl = 1	at least one channel is ramping Vo or not yet stable after ramping (ramping - with ADC filter frequency fN=100 Hz)
SFLPg = 0	safety loop is broken -VO has been shut off, reset by a write of the 'General status' with sloop flag is set to "1"
SFLPg = 1	safety loop is closed
noRamp = 0	VO is ramping in at least one channel
noRamp = 1	no channel is ramping
noSumErr = 0	voltage limit, current limit or trip has been exceeded in at least one of the channels (error)
noSumErr = 1	status channel flags v & c & t = 0 for all channels (no errors)
INHb = 0	no external INHIBIT signal
INHb = 1	external INHIBIT signal
BoardTemp = 0	temperature ≤ 55°C
BoardTemp = 1	temperature > 55°C
VLIM=0	hardware voltage limit hasn't been exceeded
VLIM=1	hardware voltage limit has been exceeded
CLIM=0	hardware current limit hasn't been exceeded
CLIM=1	hardware current limit has been exceeded
RERR=0	hardware current hasn't been exceeded
RERR=1	voltage has been exceeded
TRP=0	no trip
TRP=1	voltage or current trip

If one of the bits 'noHwVLtoLow', 'SPLYTMPgd', 'SFLPg', 'noSumErr' in the modul access "General status module" has not been set, the module will send this access as an active error message with higher priority (ID9=0). An additional 2nd data byte offers more information about the NoSumError flag of the first byte. OPC

Example of an active error message

access	identifier	length code	DATA_ID	DATA_1	DATA_0
HV board active access	0x180	3	0xc0	0x57	0x01

TRP=1 noSumErr=0 etc.

3.5.4.2 Log-on / Log-off Front-end device at superior layer (module active- / write access)

DCP frame:

Access	DATA_DIR	DATA_ID	DATA_1	DATA_0
HV board active access	1	0xD8	GeneralStatus	DeviceClass
master write access	0	0xD8	LogOnOff	
Notes: GeneralStatus DATA_1 UI1 refer chapter 3.4 Communication via Interface DeviceClass DATA_0 UI1				

device class	label	firmware	description		associated serial numbers
EDCP	DCP				
21	0	EDS	E16D0_xxx E16D1_xxx E24D1_xxx	EDS 16 channels per PCB EDS 16 channels per PCB EDS 24 channels per PCB	471xxx / 71xxx
22	-	HPS / LPS	H101C0_5xx	HPS 19", 1 channel HV Power Supply (300W, 800W)	68xxxx / 70xxxx
23	-	HPS / LPS	H201C0_2xx	HPS compact, 1 channel HV Power Supply (350W)	68xxxx / 70xxxx
24	6	EHS/EMS/ELS	E08C0_xxx	ExS 8 channel per PCB, standard common GND	73xxxx
24	6				73xxxxx
25	7				74xxxx
25	7				74xxxxx
25	7	EHS/EMS/ELS	E08F0_xxx	ExS 8 channel per PCB, standard, floating GND	474xxx
26	2	EHS/EMS/ELS	E08F2_xxx	ExS 8 channel per PCB, floating GND 2 ranges for measurement of current	72xxxx 72xxxxx
27	-	EHS/EMS/ELS	E08C2_xxx	ExS 8 channel per PCB, common floating GND 2 ranges for measurement of current	78xxxx 78xxxxx
41	-	MICC	MICC_3xx	MICC Multichannel Interface Crate Controller for MMC Crates	458xxx
42	-	MICP	MICP_3xx	MICP Multichannel Interface Crate PHQ Controller for MMC Crates	458xxx
60	-	HPS	H101C1_1xx	HPS 19", 1 channel HV Power Supply (1.5kW - 10 kW)	90xxxxx
70	-	EHS	E16C1_1xx	ExS 16 channels per PCB or 32 channels per module	79xxxx 79xxxxx

LogOnOff DATA_1=1 superior layer send a "Log-on" at Front-end device to registration UI1
 DATA_1=0 superior layer send "Log-off" to Front-end device
 xxx and xxxx are running numbers

After POWER ON the Front-end device - up to a number of two per module - will give this module access cyclically on the bus (ca. 1 sec). If a controller of superior layer identifies this access then it is possible to register this as a Front-end device and is possible to address it with FE_ADR. (see also description 11bit-Identifier)

After the successful registration the Front-end device will not send further 'Log-on' accesses as long as:

- it receives accesses from the external CAN Bus in periods shorter than one minute or
- until the superior controller will send a 'Log-off' access to the Front-end device.

3.5.5 Events

The module provides an extended event collecting logic. This is necessary to monitor extraordinary events and forward them to the host.

3.5.5.1 Channel events

These event-bits in the channel event status register are related to mask bits in the channel event mask register. With help of an AND function (bit-wise) between an event bit and the according mask bit a result only occurs where the mask bit has been set. A following logic OR function of all of these results leads to the event status of the channels.

```
ModuleEventChannelStatus[ch] = (ChannelEventStatus.EVLIM[ch] AND ChannelEventMask.MEVLIM[ch]) OR
see 3.5.2.9                  (ChannelEventStatus.ECLIM[ch] AND ChannelEventMask.MECLIM[ch]) OR
ModuleEventChannelStatus    (ChannelEventStatus.ETRP[ch] AND ChannelEventMask.METRP[ch]) OR
(module write- / read-write  (ChannelEventStatus.EEINH[ch] AND ChannelEventMask.MEEINH[ch]) OR
access)                      (ChannelEventStatus.EVBNDs[ch] AND ChannelEventMask.MEBNDs[ch]) OR
                              (ChannelEventStatus.ECBNDs[ch] AND ChannelEventMask.MECBNDs[ch]) OR
                              (ChannelEventStatus.ECV[ch] AND ChannelEventMask.MECV[ch]) OR
                              (ChannelEventStatus.ECC[ch] AND ChannelEventMask.MECC[ch]) OR
                              (ChannelEventStatus.EEMCY[ch] AND ChannelEventMask.MEEMCY[ch]) OR
                              (ChannelEventStatus.EEOR[ch] AND ChannelEventMask.MEEOR[ch]) OR
                              (ChannelEventStatus.EOn2Off[ch] AND ChannelEventMask.MEOn2Off [ch]) OR
                              (ChannelEventStatus.EIER[ch] AND ChannelEventMask.MEIER[ch])
ch={0..n}
```

The status of all channel events is collected in the register EventChannelStatus of the module items.

For a selection or filtering of the channel events a related mask register has been provided (3.5.2.11 ModuleEventChannelMask (module write- / read-write access)). With help of the AND or OR function (see channel) the event active signal of the channels EventChannelActive will be generated:

```
EventChannelActive          = (EventChannelStatus[0] AND EventChannelMask[0]) OR
                              (EventChannelStatus[1] AND EventChannelMask[1]) OR
                              ...
                              (EventChannelStatus[n] AND EventChannelMask[n])
```

3.5.5.2 Group events (in preparation)

Like written before groups are also able to generate Events. These events will be collected in the status word EventGroupStatus of the GroupData. With help of the mask register EventGroupMask the event active signal of the groups EventGroupActive will be generated.

$$\begin{aligned} \text{EventGroupActive} &= (\text{EventGroupStatus}[0] \text{ AND } \text{EventGroupMask}[0]) \text{ OR} \\ &(\text{EventGroupStatus}[1] \text{ AND } \text{EventGroupMask}[1]) \text{ OR} \\ &\dots \\ &(\text{EventGroupStatus}[23] \text{ AND } \text{EventGroupMask}[24]) \end{aligned}$$

3.5.5.3 Module events

With help of the NOT, AND or OR function the event active signal of the module EventModuleActive will be generated:

$$\begin{aligned} \text{EventModuleActive} &= (\text{NOT}(\text{ModuleEventStatus.ETMPngd}) \text{ AND } \text{ChannelEventMask.METMPngd}) \text{ OR} \\ &(\text{NOT}(\text{ModuleEventStatus.ESPLYngd}) \text{ AND } \text{ChannelEventMask.MESPLYngd}) \text{ OR} \\ &(\text{NOT}(\text{ModuleEventStatus.ESFLPngd}) \text{ AND } \text{ModuleEventMask.MESFLPngd}) \text{ OR} \end{aligned}$$

From both signals EventChannelActive and EventModuleActive the global event active signal of the module IsEventActive of the ModuleStatus register will be generated.

$$\text{IsEventActive} = (\text{EventChannelActive} \text{ OR } \text{EventGroupActive} \text{ OR } \text{EventModuleActive})$$

This global signal 'IsEventActive' triggers a fast message on the CAN bus with the DCP Module frame of General status.

Example:

The event flag ECC of the ChannelEventStatus for channel 2 or the event flag EventTemperatureNotGood of the ModuleEventStatus should release a fast CAN frame:

- Channel[2].ChannelEventMask.Bit.MECC = 1
- Module.EventChannelMask.Bit.2 = 1
- Module.EventMask.Bit.METMPngd = 1

The signal isEvtActive is triggered and release a fast CAN frame of General status when:

(Channel[2].ChannelEventStatus.Bit.ECC & Channel[2].ChannelEventMask.Bit.MECC & Module.ModuleEventChannelMask.Bit2

OR

Module.ModuleEventStatus.Bit.ETMPngd & Module.ModuleEventMask.Bit.METMPngd

OR

(Module.ModuleEventChannelStatus.Bit2 & Module.ModuleEventChannelMask.Bit2)

Fast CAN frame in case of Channel[2].ChannelEventStatus.Bit.ECC == 1:

0x190 3 0xc0 0x37 0x00 (ID=0x190, ID9=0; Len=3; DATA_ID=0xc0; Data=0x3700)

(Channel[2].ChannelEventStatus.Bit.ECC & Channel[2].ChannelEventMask.Bit.MECC)==1 → ModuleEventChannelStatus.Bit2=1

Fast CAN frame in case of Module.ModuleEventStatus.Bit. ETMPngd == 1:

0x190 3 0xc0 0x17 0x40 (ID=0x190, ID9=0; Len=3; DATA_ID=0xc0; Data= 0x1740)

INFORMATION



INFORMATION

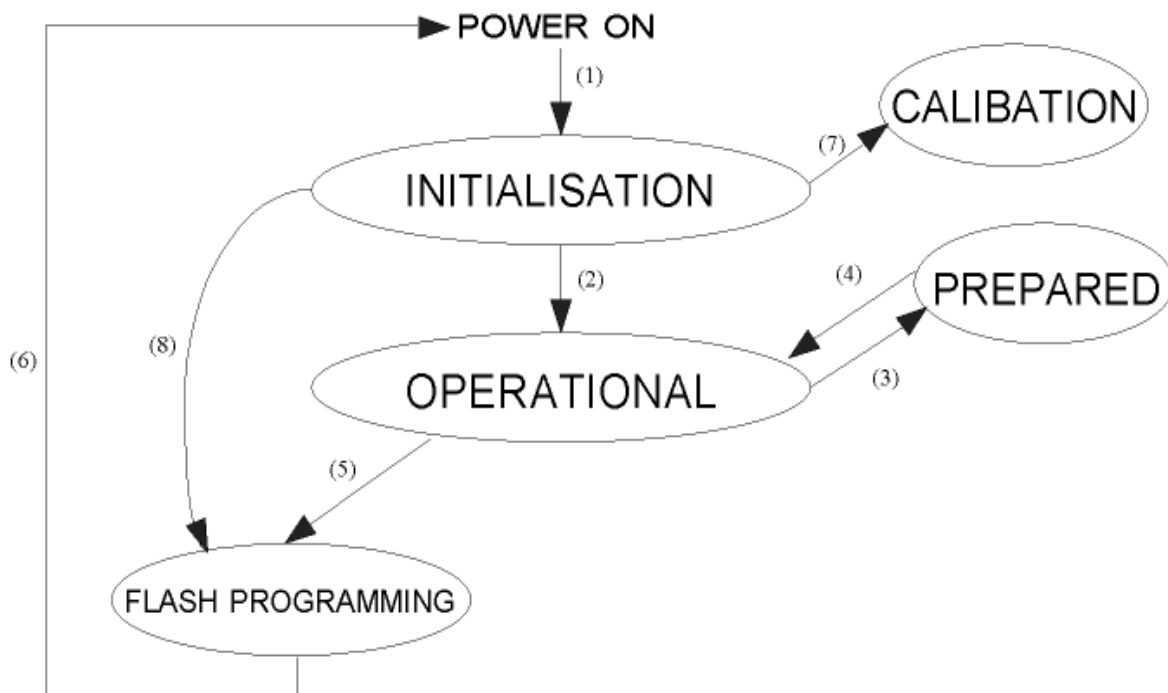
Please note that, a release of a fast CAN frame is different in handling depending on EDCP or DCP mode!

4 Appendix

4.1 A – Shortcuts

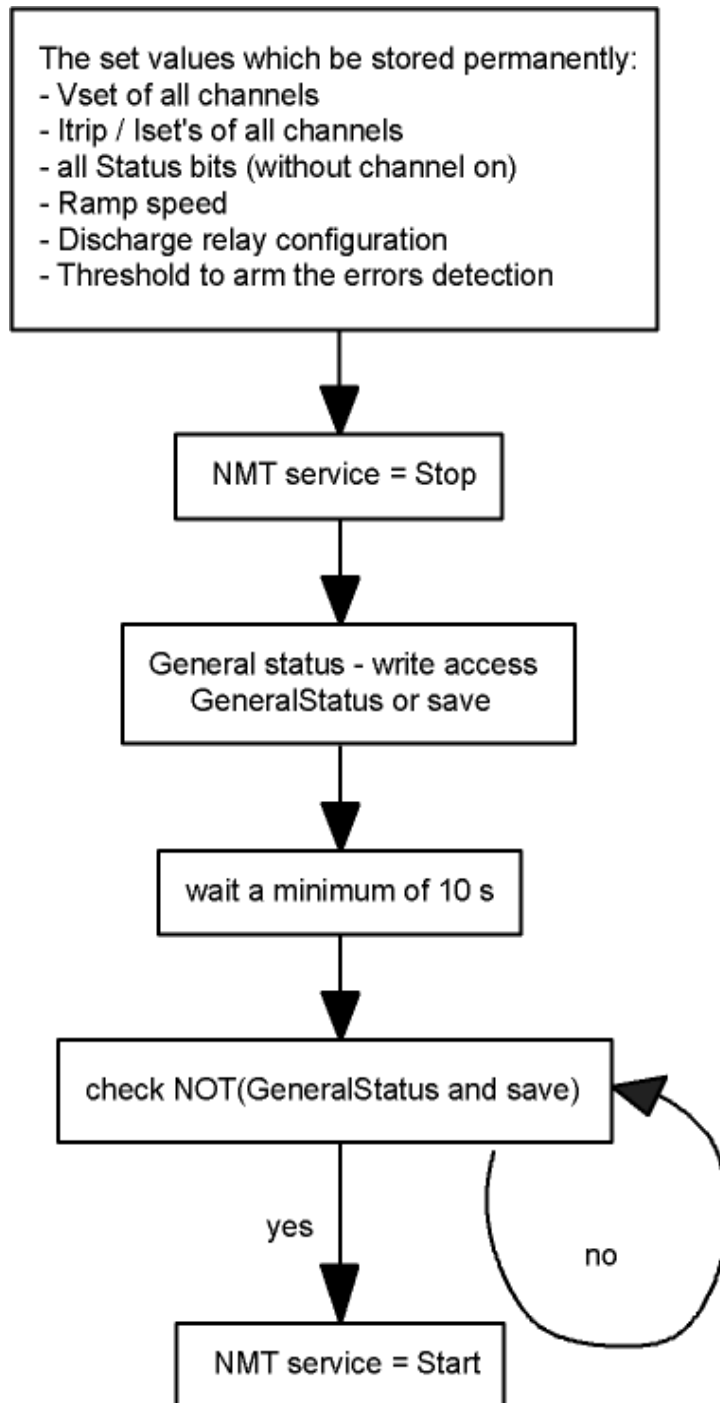
BCD	binary coded decimal format
CAN	controller area network
Chm	channel m=0 ... 15
CHN	channel
DCP	device control protocol
DATA_ID	data identifier of DCP
fN	first filter notch frequency
HV	High voltage
HW	hardware
I _{meas}	Actual current
I _{max}	Hardware current limit
I _{O max}	Nominal current
I _{set}	Set current
I _{trip}	Trip current
ISO	International Standard Organization
LSB	least significant bit
MBR	channel members
MSB	most significant bit
NBR	group number
NMT	network management service
OSI	Open System Interconnect
PCB	printed circuit board
p/a	passive / active
SN.	serial number
UI1	unsigned character
SI1	signed character
UI2	unsigned short integer (16 bit)
UI4	unsigned integer (32 bit)
R4	float according to IEEE-754 single precision format
V _{meas}	Actual voltage
V _{max}	Hardware voltage limit
V _{O max}	Nominal voltage
V _{set}	Set voltage
SW	software

4.2 Appendix B – Diagram of operating modes

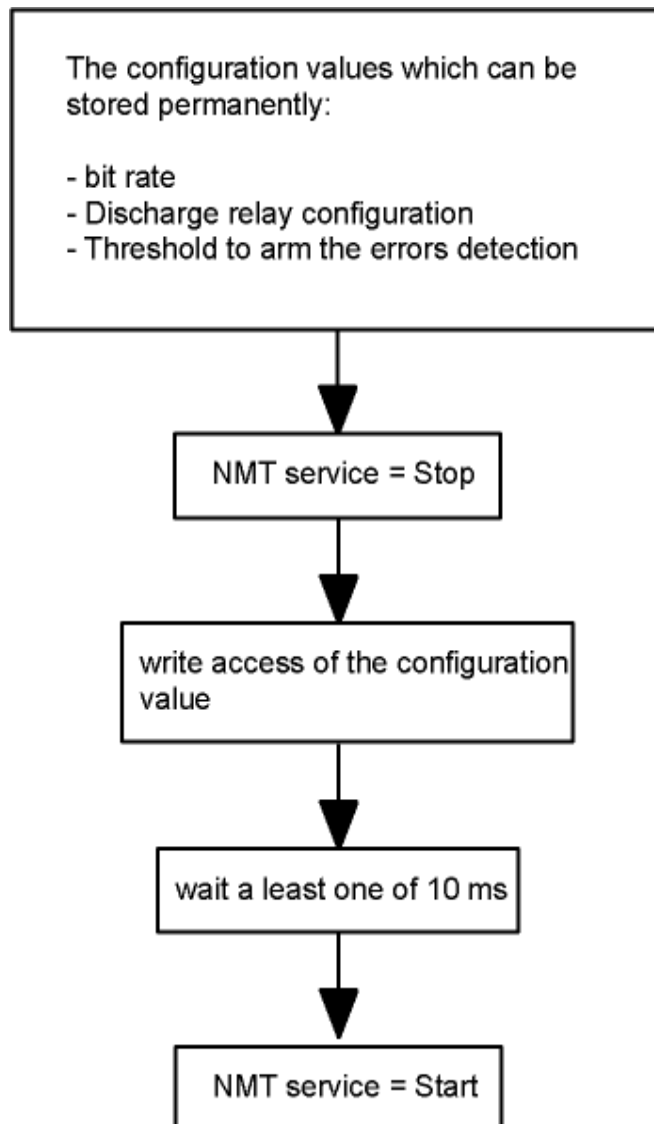


- (1) The INITIALIZATION follows after the POWER ON reset of the device hardware. It can be differ between different device classes.
- (2) The state OPERATIONAL will be obtained by the device itself if all initializations are ready or the state PREPARED runs in time out.
- (3) NMT Stop switches the devices of the CAN segment into the state PREPARED. In this state the permanent settings of the devices can be changed (per device Bit rate, Set voltage, Set current, Ramp speed, General status, Threshold to arm the errors detection, Discharge relay configuration, CAN message configuration and additional the Bit rate as a broadcast message).
- (4) NMT Start takes the devices of the CAN segment back to the OPERATIONAL state.
- (5) With the special Flash programming access the device runs into the state FLASH PROGRAMMING. The high voltage will be switched off automatically before.
- (6) The device will execute a POWER ON reset itself at the end of FLASH PROGRAMMING.
- (7) The state CALIBRATION will be obtained by setting of the corresponding switches at the Calibration Crate.
- (8) The state FLASH Programming will be obtained also if the corresponding switch at the Calibration Crate / Flash Programming Slot are set.

4.3 Appendix C – Programming flowchart to store the settings permanently with help of General state save bit



4.4 Appendix D – Programming flowchart to store the configurations of the module permanently with help of General state save bit



4.5 Appendix E – Literature references

This document
https://iseg-hv.com/download/?dir=SOFTWARE/SNMPguide/SNMP_Programmers-Guide_en.pdf
iseg Hardware Abstraction Layer
http://download.iseg-hv.com/SYSTEMS/MMS/isegHardwareAbstractionLayer.pdf
Device Control Protocol
CAN data link layers in some detail
https://www.can-cia.org/can-knowledge/can/can-data-link-layers/
High Voltage System module
https://iseg-hv.com/
Delayed trip EHS.pdf

5 Manufacturer contact

iseg Spezialelektronik GmbH

Bautzner Landstr. 23

01454 Radeberg / OT Rossendorf

GERMANY

FON: +49 351 26996-0 | FAX: +49 351 26996-21

www.iseg-hv.com | info@iseg-hv.de | sales@iseg-hv.de